



INRODA

STRENGTH IN ANY FIELD

 Rodovia João Mellão, SP 255, km 264 + 600m Zona Rural, SP

 Zip Code 18704-201  Phone (14) 3711-3000

 Email: comercial@inroda.com.br | export@inroda.com.br

 Website: inroda.com.br



MANÁ

COLHEITADEIRA DE MANDIOCA



**MANUAL
DE INSTRUÇÕES
E CATÁLOGO DE PEÇAS**

 **INRODA**
FORÇA EM CAMPO

ATTENTION

The MANÁ CASSAVA HARVESTER was developed to solve the difficulties involved in harvesting cassava. The MANÁ CASSAVA HARVESTER has the structural solidity of Inroda's products. It has two harvesting lines and an independent hydraulic system, and can be used for uprooting, digging, separation and bagging.

Revision: 00
Code: 022.29.0066



The drawings contained in this instruction manual and parts catalog are for illustration purposes only.



If you have any doubts, do not operate or handle the equipment, always contact after-sales.
Email: posvenda@inroda.com.br

SUMMARY



INSTRUCTION MANUAL

1. Presentation.....	06
2. Warranty Certificate	07
3. Safety Rules.....	08
4. Components.....	13
5. Technical Specifications - Maná Cassava Harvester.....	14
6. About the Implement.....	15
7. Lifting Support Points	17
8. Maná Stickers Placement.....	18
9. Adjustments and	
Operations	19
9.1. Uprooter hitch and adjustment	19
9.2. Line Adjustment.....	21
9.3. Separator Adjustment.....	22
9.4. Lower Conveyor.....	22
9.5. Lifting Conveyor Adjustment.....	23
9.6. Upper Conveyor.....	23
9.7. Control Panel.....	24
9.8. Bag Changing.....	25
9.9. Grease Points.....	27
Discover our products.....	29



1. PRESENTATION

This manual is provided by INRODA - Indústria de Roçadeiras Desbravador Avaré Ltda. and is considered an integral part of the machine. The purpose of this material is to guide the user through everything that is necessary for it to function properly, from acquisition to operational procedures for use, safety and maintenance.

The operator must carefully read the entire manual before putting the equipment into operation and make sure of the safety recommendations. The dealer will make the technical delivery of the equipment, advising the consumer on maintenance items, safety, their obligations in the event of technical assistance, strict observance of the warranty term and reading of the instruction manual.

Any request for technical assistance regarding the warranty should be made to the organization from which the equipment was purchased.

We reiterate the need to read the warranty certificate carefully and to observe all the items in this manual, as by following the items correctly the consumer will be extending the useful life of their equipment.

2. WARRANTY CERTIFICATE

INRODA - Indústria de Roçadeiras Desbravador Avaré Ltda. grants its customers and dealers a six (6) month warranty for equipment manufactured by the company, starting from the date of delivery on the invoice to the first end consumer, undertaking to repair and/or replace components that show a proven manufacturing defect during this period.

- Reimbursement of freight, travel and other expenses is the

The warranty does not include the following:

responsibility of the dealer;

Parts that compose the equipment, but that are not manufactured by INRODA, such as cardan shafts, tires, hydraulic components, belts, among others. The warranty for such components is the responsibility of their respective manufacturers;

- Components that are damaged or broken due to normal wear and tear and/or evidence of misuse or lack of maintenance of the equipment;
- INRODA's liability for any damage occurring to the equipment at the time of transport.
- Equipment that had its original characteristics modified without prior authorization from INRODA, as well as the use of non-original parts.

In order to claim the product warranty, the dealer must be contacted by the customer to carry out the initial service, identify the problem and repair the equipment, replacing any necessary components. When the possibilities for resolving the service by the dealer have been exhausted without resolving the problem, support from the INRODA technical team must be requested using the warranty request form. All parts and items replaced in compliance with the equipment warranty will be the exclusive property of INRODA.

The replaced components, either by the dealer or by the INRODA technical team, will be analyzed at the factory and, if it is concluded that it is not a manufacturing defect, the dealer will be responsible for the costs generated with the replacement of the items/parts of the equipment.

Any and all necessary repairs to the equipment can only be carried out with the prior and express authorization of INRODA, upon presentation of a quote describing the service to be performed and the parts to be used.

The conditions of the warranty certificate do not constitute a reason for termination, suspension or postponement of payments under the equipment purchase contract.

INRODA is entitled, at its sole discretion, to make changes and/or improvements to the equipment without prior notice, without the obligation to apply the same changes/improvements to previously manufactured equipment.

3. SAFETY RULES



THIS WARNING SYMBOL INDICATES IMPORTANT SAFETY WARNINGS IN THIS MANUAL. WHENEVER YOU FIND THIS SYMBOL, READ THE FOLLOWING MESSAGE CAREFULLY AND BE AWARE OF THE POSSIBILITY OF PERSONAL ACCIDENTS.

- 1 - When operating with the implement, do not allow people to remain too close or on the implement.
- 2 - Do not start the tractor engine indoors, without proper ventilation, as the exhaust gases are harmful to health.
- 3 - When connecting or disconnecting the hydraulic hoses, relieve the circuit pressure.
- 4 - Periodically check the condition of the hoses. If there is any signs of an oil leak, it must be replaced immediately, because oil works under high pressure and can cause serious injury;
- 5 - Do not make adjustments while the implement is in operation.
- 6 - When driving the tractor on roads, keep the brake pedals connected.
- 7 - When carrying out any assembly or disassembly work on the disc sections, put gloves on your hands.
- 8 - When maneuvering the tractor to hitch the implement, make sure you have the necessary space and that no one is too close, Always maneuver in low gear and be prepared to brake in an emergency.
- 9 - Do not wear very loose clothes, as they could become

entangled in the implement.

- 10 - Always drive the tractor at speeds compatible with safety, especially when working on rough terrain or slopes, places where the tractor must always be in gear;
- 11 - When working on sloping ground, proceed with care, always trying to maintain the necessary stability. In case of imbalance, reduce acceleration, turn the wheels to the side of the slope and never lift the implement.
- 12 - When starting the tractor engine, be properly seated in the operator's seat and fully aware of the correct and safe handling of both the tractor and the implement. Always place the gearshift lever in the neutral position, disengage the PTO control gear and place the hydraulic controls in the neutral position.
- 13 - Do not operate the tractor with a light front end. If the front tends to lift add more weight to the front or front wheels.
- 14 - When leaving the tractor, place the gearshift lever in the neutral position and apply the parking brake. Never leave the implement hitched to the tractor in the raised position of the hydraulic system.



WARNING

Improper handling of this equipment can result in serious or fatal accidents. Before putting the equipment into operation, carefully read the instructions contained in this manual. Make sure that the person responsible for the operation is instructed on correct and safe handling. Also make sure that the operator has read and understood the product's instruction manual.



EQUIPMENT DEVELOPED FOR AGRICULTURAL USE. DO NOT ALLOW PEOPLE TO APPROACH DURING SERVICE. INRODA RESERVES THE RIGHT TO CHANGE THE TECHNICAL CHARACTERISTICS OF THIS PRODUCT WITHOUT PRIOR NOTICE.

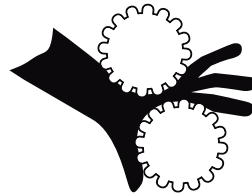


Read the instruction manual carefully for recommended safety practices.

There is a risk of injury to the operator and bystanders during operations for the following reasons:

- Body contact with the active elements of the machine can cause accidents. Always wear Personal Protective Equipment (PPE).
- Falls that can cause serious or fatal injuries.

RISK OF CRUSHING



RISK OF DEATH

- 1 - Stay away from the harvest lines while they are rotating;
- 2 - When operating the Maná Cassava Harvester, do not allow people to remain too close to the moving parts;
- 3 - Read the instruction manual before operating and follow all recommendations.
- 4 - Know how to immediately stop the tractor and the implement in case of emergency.
- 5 - Untrained individuals and children may not operate this equipment.
- 6 - Beware of uneven terrain, slow down on curves.
- 7 - When leaving the tractor, place the gearshift lever in the neutral position and apply the parking brake. Never leave implements hitched to the tractor;*
- 8 - Before starting any operation, carry out a general check of the Maná Cassava Harvester and the nuts, pins and shafts;
- 9 - When maneuvering the tractor to hitch the implement, make sure you have the necessary space and that there is no one too close, always maneuver at low speed and be prepared to brake in an emergency;*
- 10 - When starting the tractor engine, be properly seated in the operator's seat and fully aware of the correct and safe handling of both the tractor and the implement. Always place the gearshift lever in the neutral position, disconnect the power take-off control gear and place the hydraulic controls in the neutral position;*
- 11 - Do not start the tractor engine in a closed space or without adequate ventilation, as the exhaust gases are

harmful to health;*

- 12 - When driving the tractor on roads, keep the brake pedals interconnected and use safety signs;*
- 13 - Do not work with the tractor with a light front. If the front tends to lift, add more weights to the front or front wheels;*
- 14 - When working on sloped terrain, proceed with care, always trying to maintain the necessary stability;*
- 15 - Alcoholic beverages or some medications can cause loss of reflexes and change the physical condition of the operator. Therefore, never operate this equipment under the influence of these substances;
- 16 - Read or explain all the procedures above to the user who cannot read.

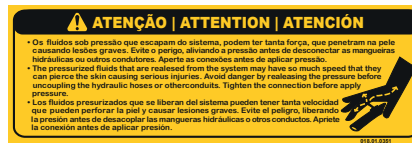
SAFETY STICKERS

Safety stickers warn of the points on the equipment that require the most attention and must be kept in good repair. If the safety stickers are damaged or become illegible, they

must be replaced. INRODA supplies the stickers upon request of the respective codes.



Code: 018.01.0376



Code: 018.01.0351



Code: 018.01.0358



Code: 018.01.0371



Code: 018.01.0373



Code: 018.01.0376



TRANSPORT BY TRUCK/TRAILER

Long-distance transportation must be by truck, trailer, etc., following these safety instructions:

- Use suitable ramps to load and unload equipment. Do not load on slopes, as serious accidents can occur.
- When loading with a winch, use the appropriate lifting points.
- Properly wedge the equipment.
- Use restraints (cables, chains, straps, etc.) in sufficient quantity to immobilize the equipment during transport;
- Check the condition of the load after the first 8 to 10 kilometers of travel, then every 80 to 100 kilometers, remembering to check that the lashings are not loosening. Check the load more often on bumpy roads.
- Stay alert. Be careful with the transport height, especially under power lines, viaducts, etc.
- Always check the current legislation on the height and width limits of the load. If necessary use flags, lights and reflectors to alert other drivers.

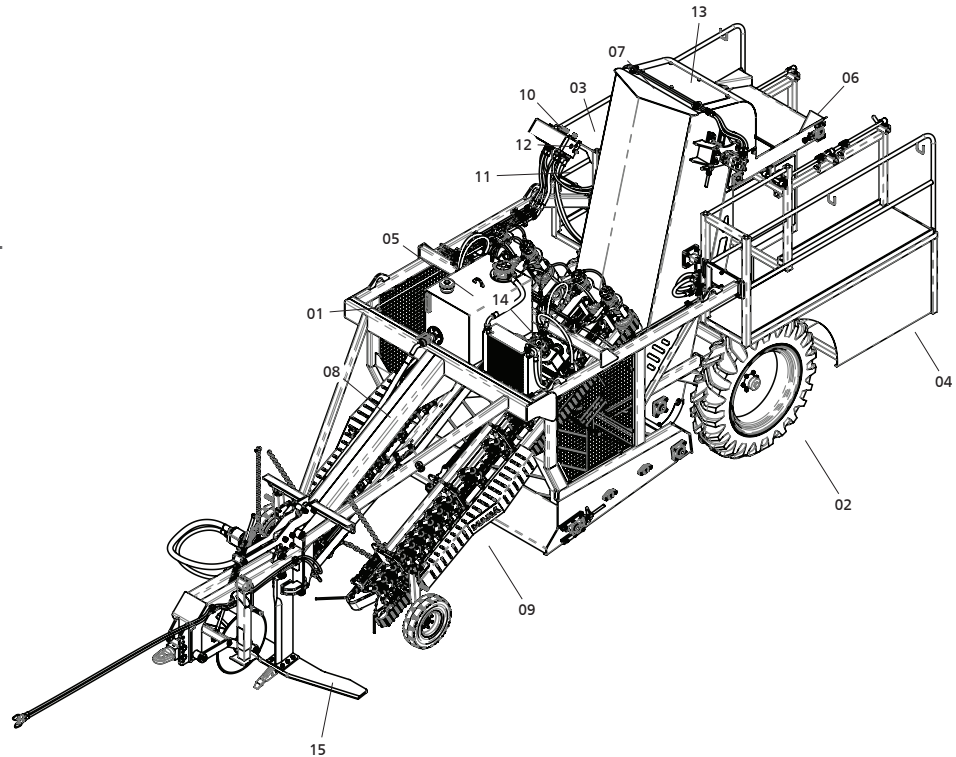
NOTE

When transporting your equipment hitched to the tractor, do not exceed a speed of 25 KM/h or 15 MPH to prevent accidents and damage to it, the tractor or the operator.

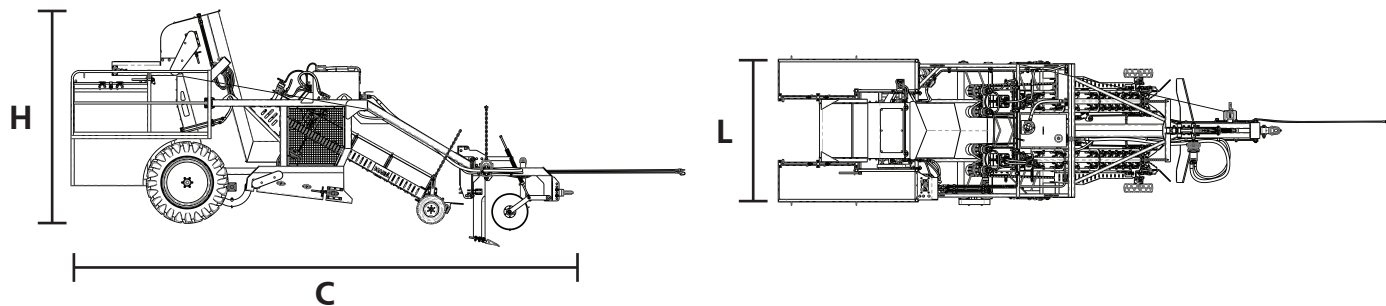


4. COMPONENTS

- 01 - Chassis.
- 02 - Wheels.
- 03 - Electrical kit.
- 04 - Platform.
- 05 - Oil reservoir.
- 06 - Elevator conveyor belt.
- 07 - Elevator.
- 08 - Right side line.
- 09 - Left side line.
- 10 - Control block.
- 11 - Hose kit.
- 12 - Gasket kit.
- 13 - Hydraulic tube kit.
- 14 - Radiator.
- 15 - Digging shank.



5. TECHNICAL SPECIFICATIONS



Height (H)	Length (C)	Weight approx. (Kg)	Width (L)	Recommended Speed	Approximate power (HP) - with reducer
3300 mm	7200 mm	3500	2300 mm	1.2 km/h to 1.5 km/h	90



6. ABOUT THE IMPLEMENT

Applications

Two-row harvesting removes the cassava roots from the soil and separate them without crushing the roots. Conveyors carrying out transport and lifting until storage in bags. Crop residues are sent and discarded into soil to form organic matter.

Characteristics

- Digging shank makes uprooting easier.
- Two harvesting lines.
- Harvesting mechanism with hydraulic drive.
- Independent hydraulic system.
- Easy to operate control panel.
- Platform that meets safety standards.
- Bag storage system.
- Non-stop unloading.

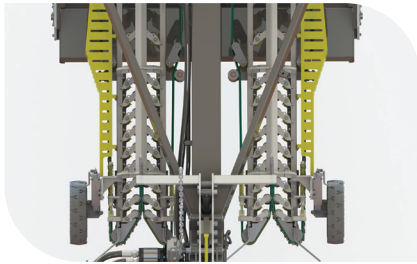
Technical recommendations for farming

The 1st pruning for harvest must be carried out 2 days in advance and at a height of 35 cm. In crops with 02 cycles, it is mandatory that the 1st pruning is carried out at a height of 30 cm. Spacing between planting lines of 90 cm. Spacing between plants of 60 cm. When planting, respect the direction of the rods for uniform growth.





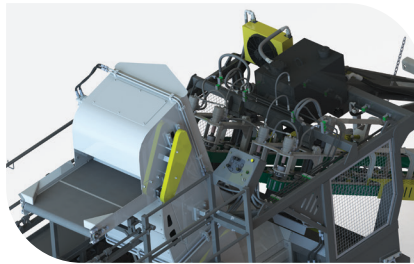
DOUBLE HARVESTING SYSTEM DOUBLE



Double harvesting line with 90cm spacing, equipped with stretchers along its length ensuring that the cassava stalk is pulled out and taken to the next harvesting process.



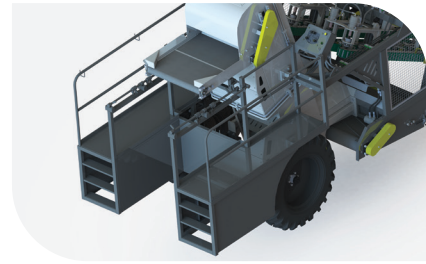
INDEPENDENT HYDRAULIC SYSTEM



An independent hydraulic system allows the equipment to be operated by different tractors without requiring any resources from the tractor, and guarantees uniform operation of the equipment.



STORAGE SYSTEM IN BAGS



The bag storage system ensures that all the roots are stored and delivered for processing in the industry.



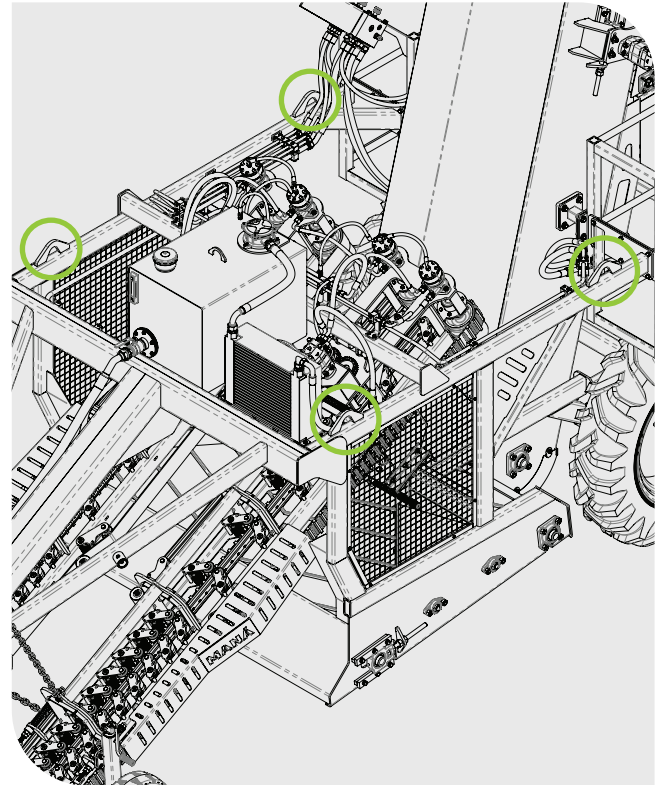
7. LIFTING SUPPORT POINTS

The Maná Cassava Harvester has lifting points considering the entire weight distribution of the equipment, always keeping it level when lifted.



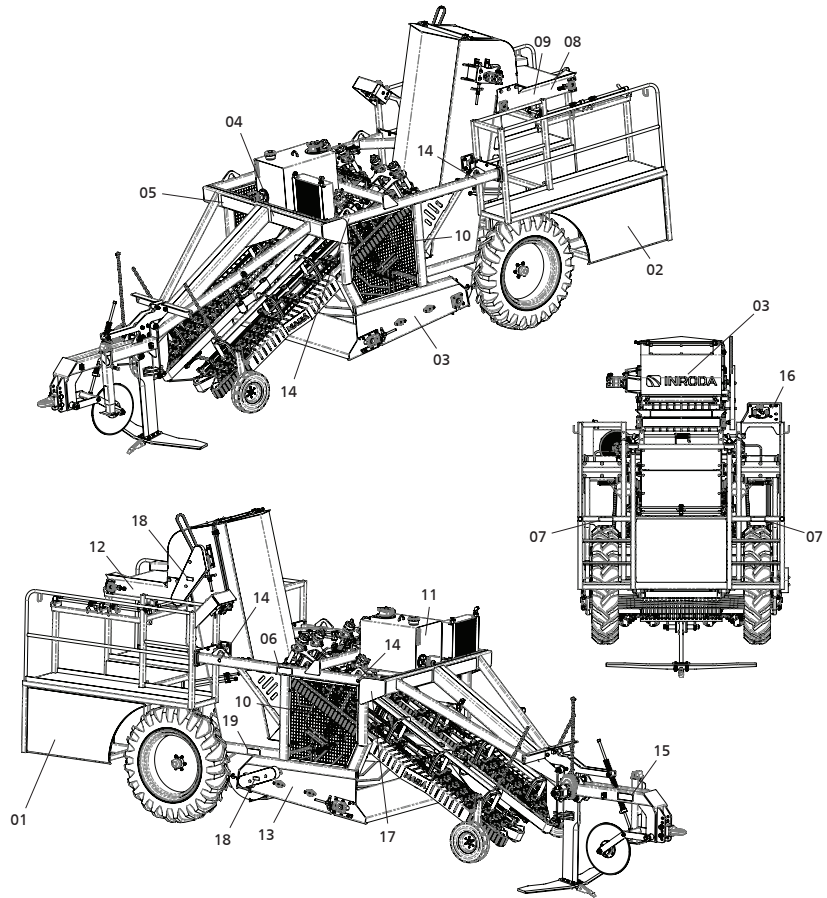
ATTENTION

Make sure the lifting straps are in perfect condition to support the weight of the equipment.



8. STICKERS PLACEMENT

- 01 - Right side Maná sticker.
- 02 - Left side Maná sticker.
- 03 - Inroda resin sticker - 747 x 115mm.
- 04 - Maná Sticker.
- 05 - Inroda Sticker 590 x 130mm.
- 06 - Caution hose leak sticker.
- 07 - Use the handrail sticker.
- 08 - Attention risk of falling.
- 09 - Attention wear PPE sticker.
- 10 - Risk of crushing sticker.
- 11 - Attention sticker check the oil level.
- 12 - Instruction manual attention sticker.
- 13 - Lubricate and retighten disc harrow sticker.
- 14 - Lifting sticker.
- 15 - Warning disc sticker.
- 16 - Control panel sticker.
- 17 - Patent required sticker.
- 18 - Attention do not remove the guards sticker.
- 19 - Tire calibration sticker.



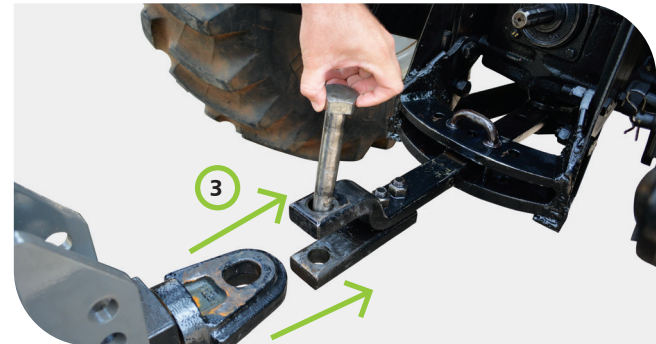
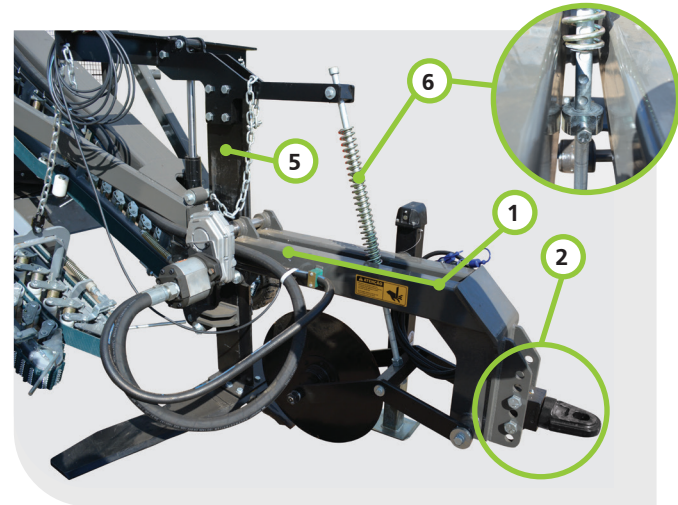
9. ADJUSTMENTS AND OPERATIONS

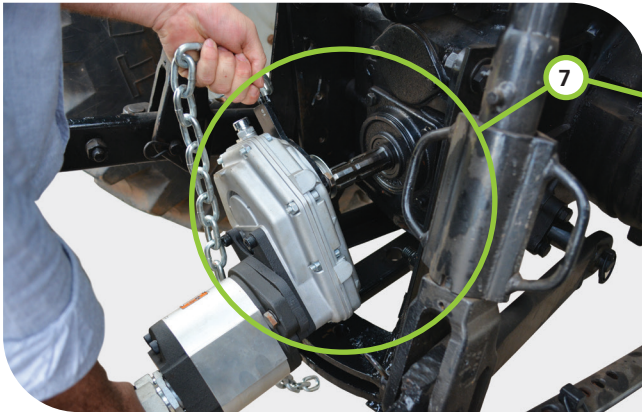
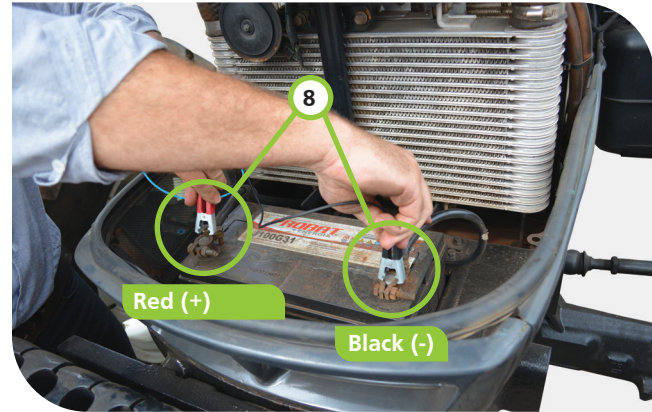
9.1 Uprooter hitch and adjustment

- (1) Make sure the header is level and parallel to the ground.
- (2) If an adjustment is necessary, the shackle can be moved by loosening its screws to change its position at the tip of the header in relation to the tractor's drawbar. (3) Hitch the tractor's drawbar;
- (4) Connect the hoses to the tractor's hydraulic system;
- (5) Using the hydraulic system, the uprooter height can be adjusted (maximum 400 mm);
- (6) Adjust the cutting disc using spring pressure;
- (7) Couple the pump to the Power Take-Off (PTO) and secure the chain in the appropriate place;
- (8) Connect the electrical harness.



ATTENTION
Before starting harvesting work,
check that the oil tank valve is open!





NOTE

Check and perform daily maintenance to preserve the quality of the components.

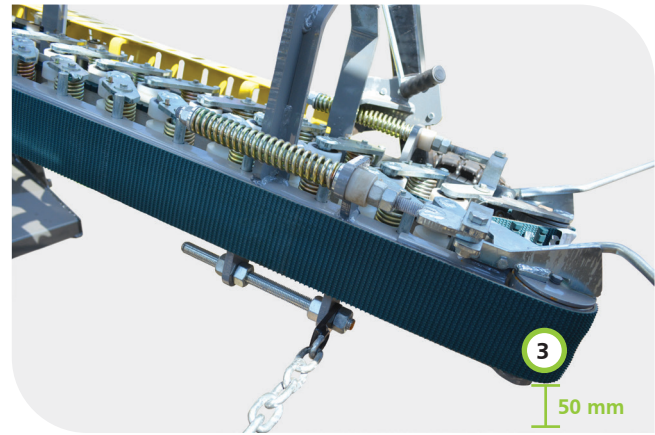
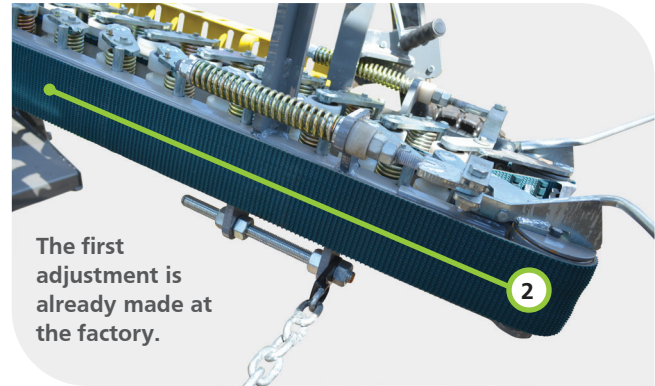
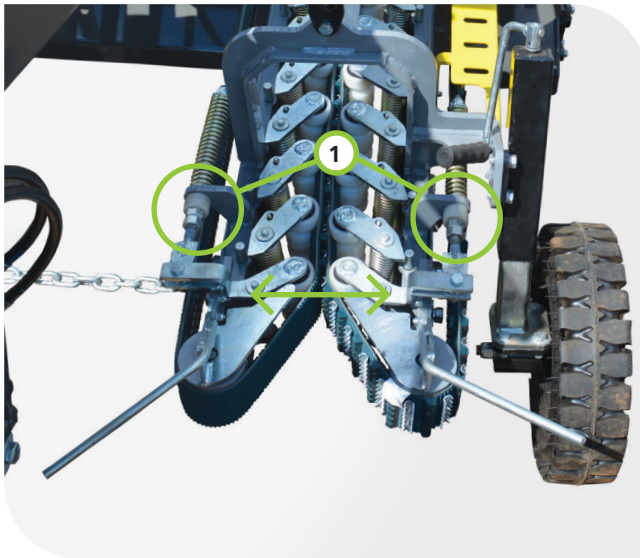


ATTENTION

After the first day of work with the implement, retighten all screws and nuts.

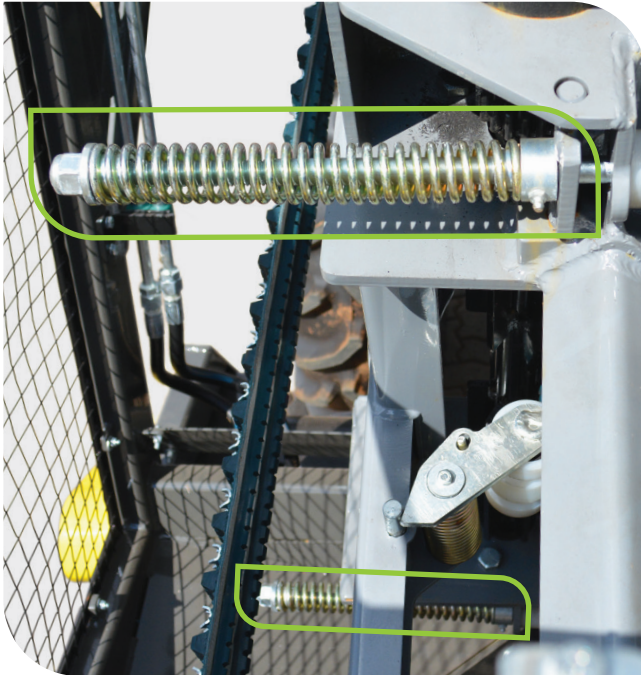
9.2 Line adjustment

- (1) Open the belt by adjusting the tensioner pressure depending on the average diameter of the rods.
- (2) Keep the conveyor belt tensioned.
- (3) Adjust the line height to approximately 50 mm from the ground, as recommended.



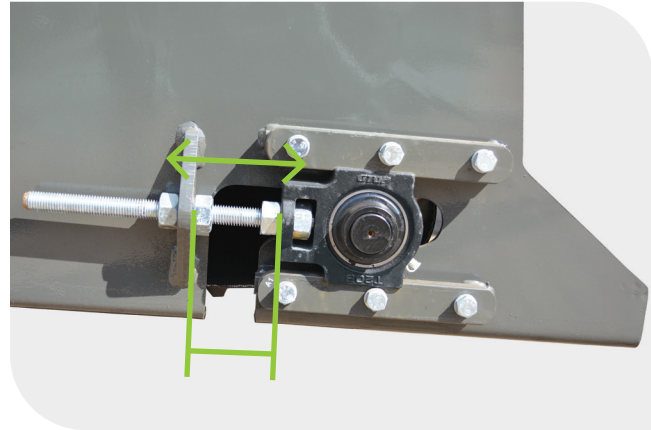
9.3 Separator adjustment

The separator opening is adjusted depending on the average root diameter and is done by increasing or decreasing the pressure on the tensioner.



9.4 Lower conveyor

Always keep the belt tensioned and do it evenly, respecting the measurements on both sides.



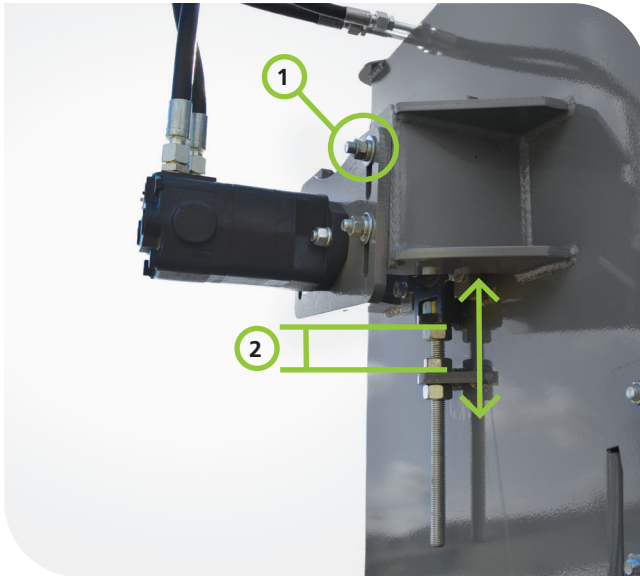
IMPORTANT

Grease bearings and gears daily.

9.5 Adjusting the lifting conveyor

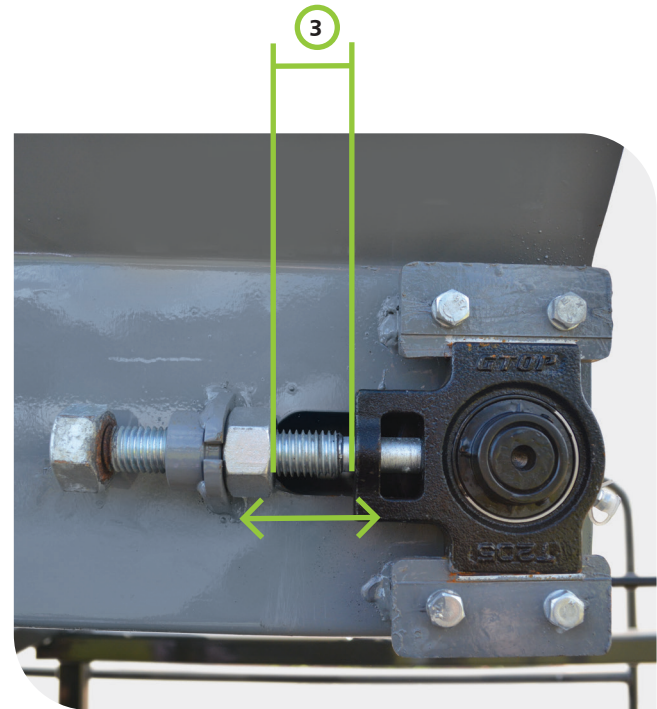
(1) Loosen the 4 (four) engine mounting screws to stretch the conveyor belt. After this process, retighten them. On the implement side, which does not have an engine, this process is not necessary;

(2) Maintain the same measurement standard on both sides of the implement.



9.6 Upper Conveyor

(3) Maintain the same measurement standard on both sides of the implement.



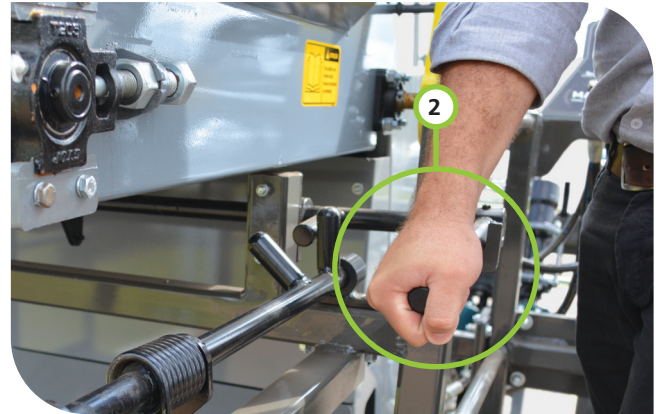
9.7 Control Panel

- (1) Conveyor speed adjustment;
- (2) Elevator speed adjustment;
- (3) Speed adjustment of start-up lines;
- (4) Separator speed adjustment;
- (5) Elevator key;
- (6) Radiator key;
- (7) Horn;
- (8) - Starter lines reverser.
- (9) - Elevator reverser.



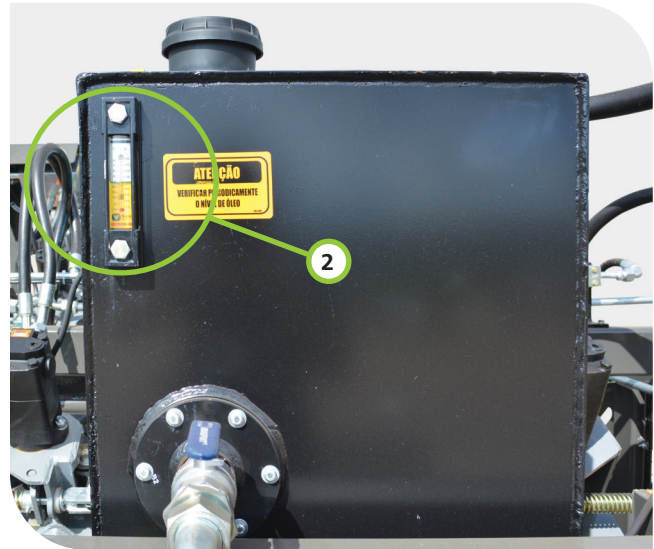
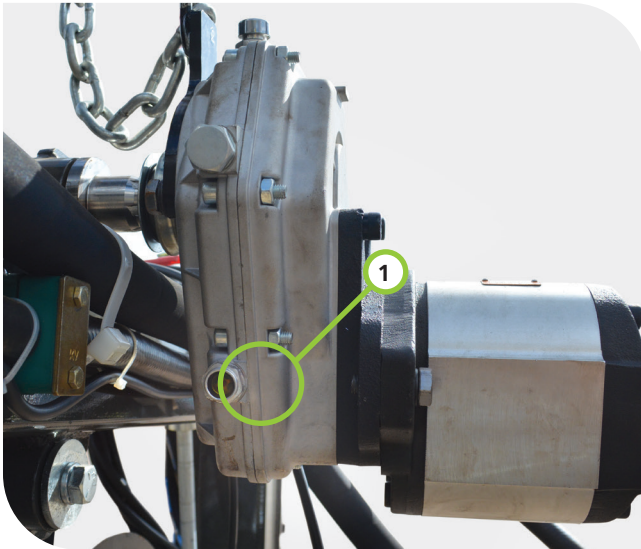
9.8 Bag changing

(1) To change bags, start by turning off the elevator; (2) after this process, manually unlock the lever;

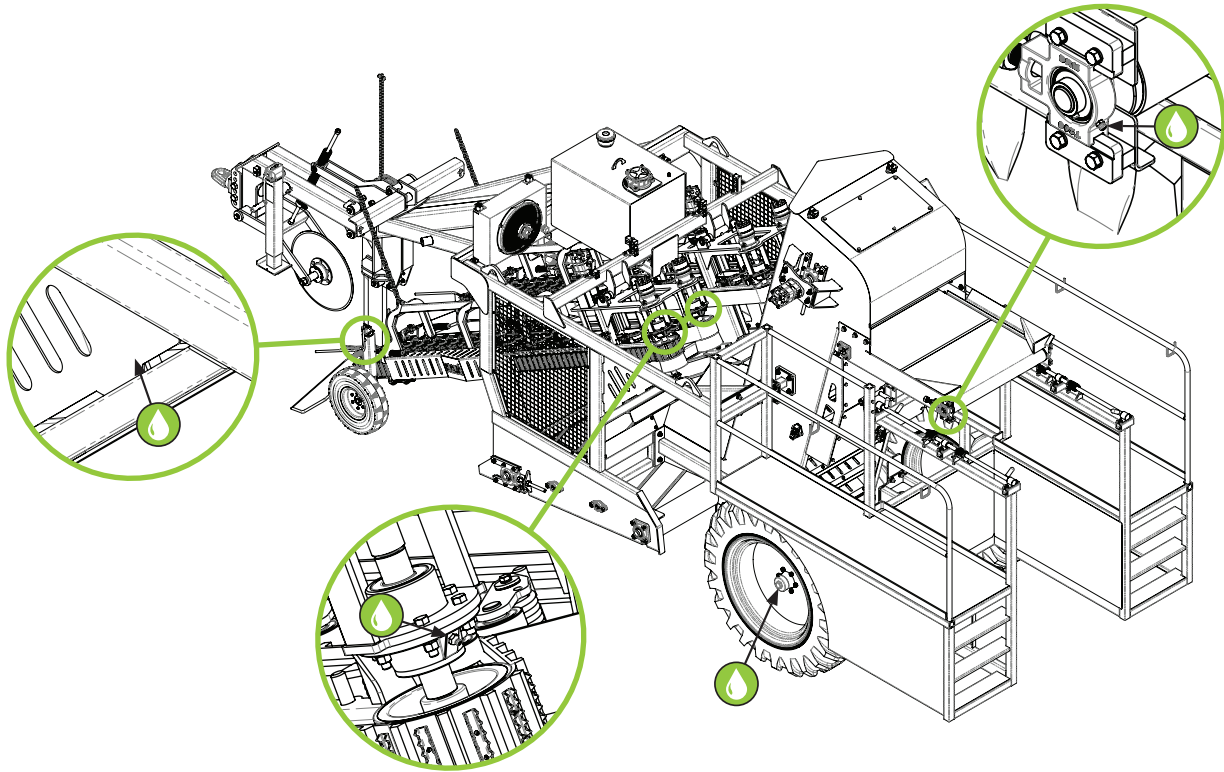


IMPORTANT

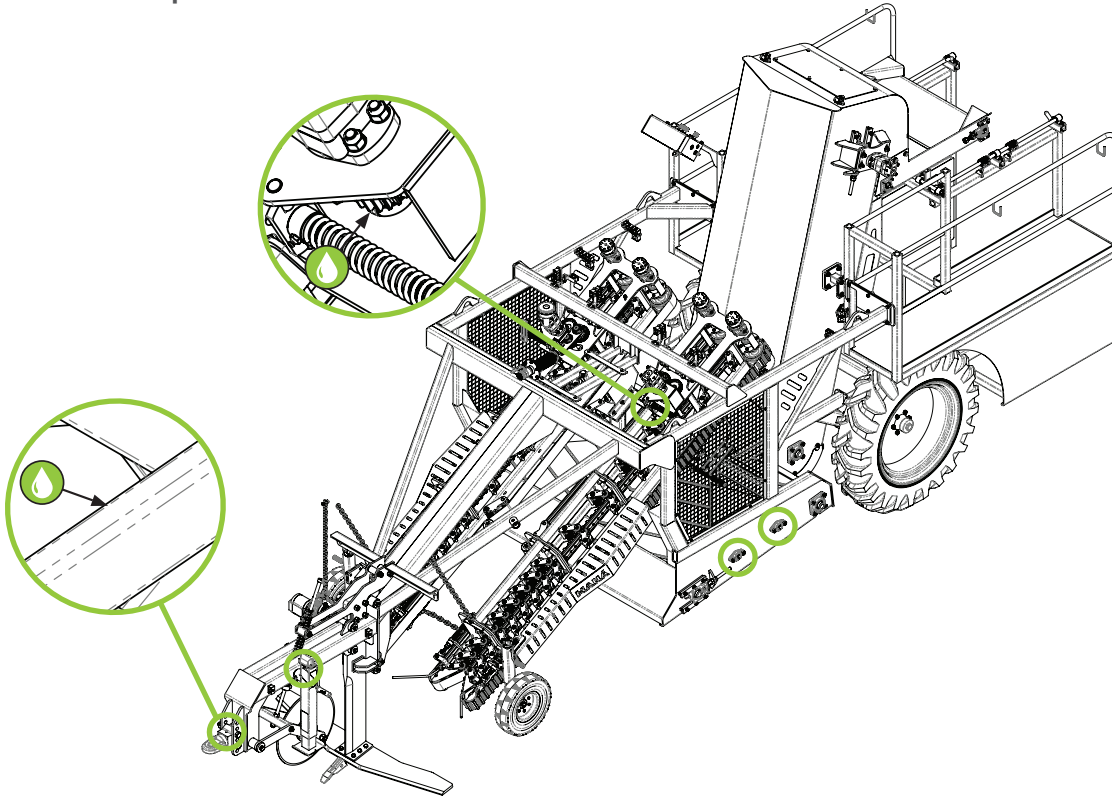
check the oil level of (1) gearbox and (2) oil reservoir daily



9.9 Grease Points



9.9 Grease points





Harvester



Hydraulic Rotary cutter



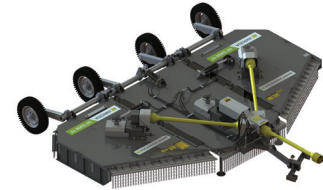
Pull-Type Rotary Cutter



Soil Drill



Leveling Disc Harrow



Pull-Type Rotary Cutter with PTO



Chisel Plow



Offset Disc Harrow



Spreader Subsoiler



Knife Roller



Trailer Rear Leveling Planer



Subsoil Plow



Back Planer



Winch



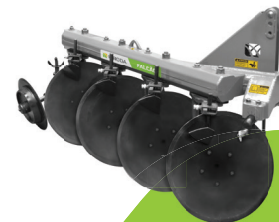
Double Rotary Cutter



Spreader Jaguar



Heavy duty disc harrow



Plow



For more

information
visit: www.inroda.com.br

SUMMARY



PARTS CATALOG

Complete Maná.....	32
Complete chassis.....	39
Right side line.....	54
Left side line.....	72
Complete elevator.....	86
Complete platform.....	94
Electrical kit.....	98
Electric circuit	99
Gasket kit	100
Tubes.....	101
Hose kit	102
Hydraulic system.....	104
Sticker kit	108

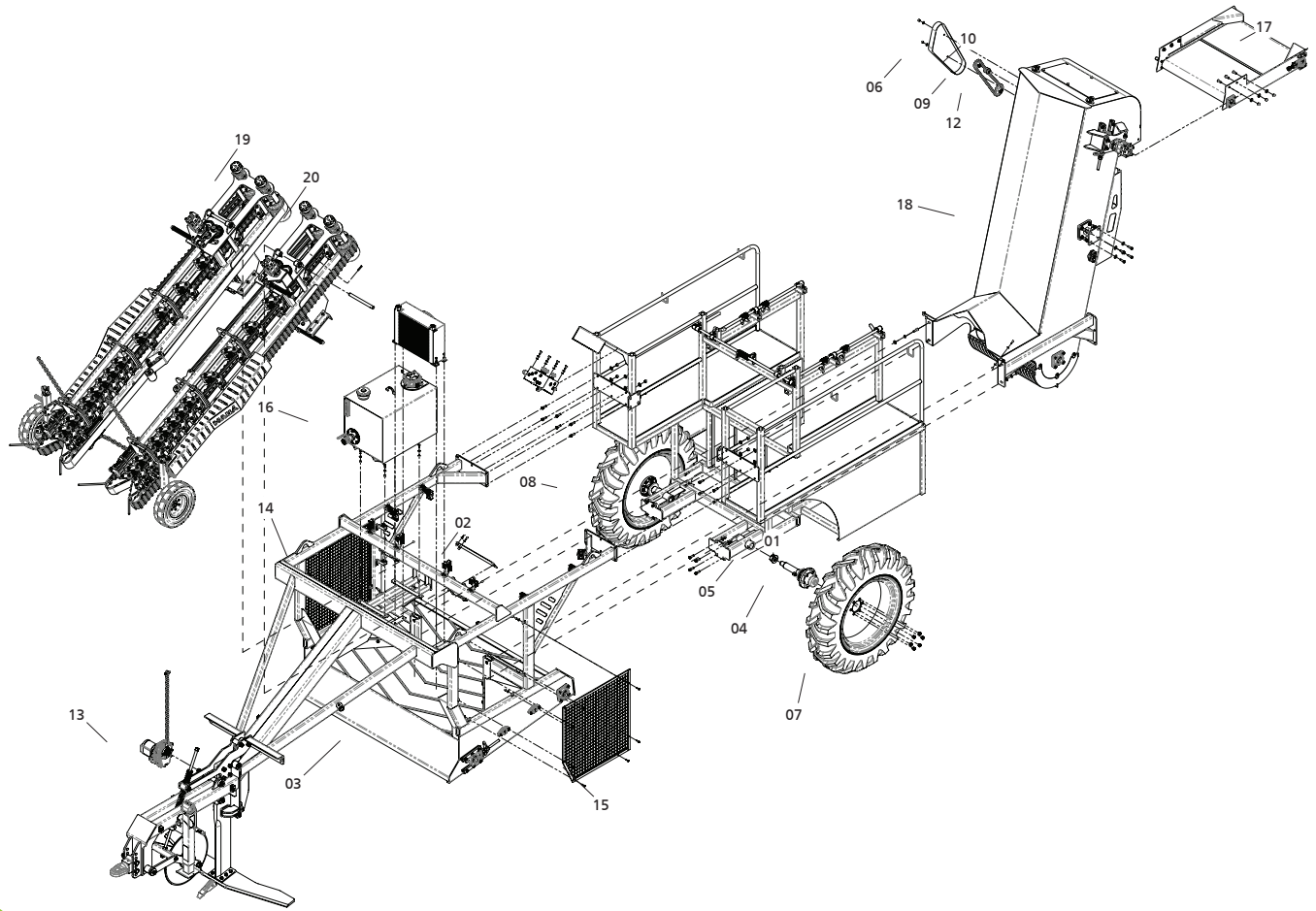
CATALOG OF PARTS



01
MANÁ
COMPLETE

COMPLETE MANÁ

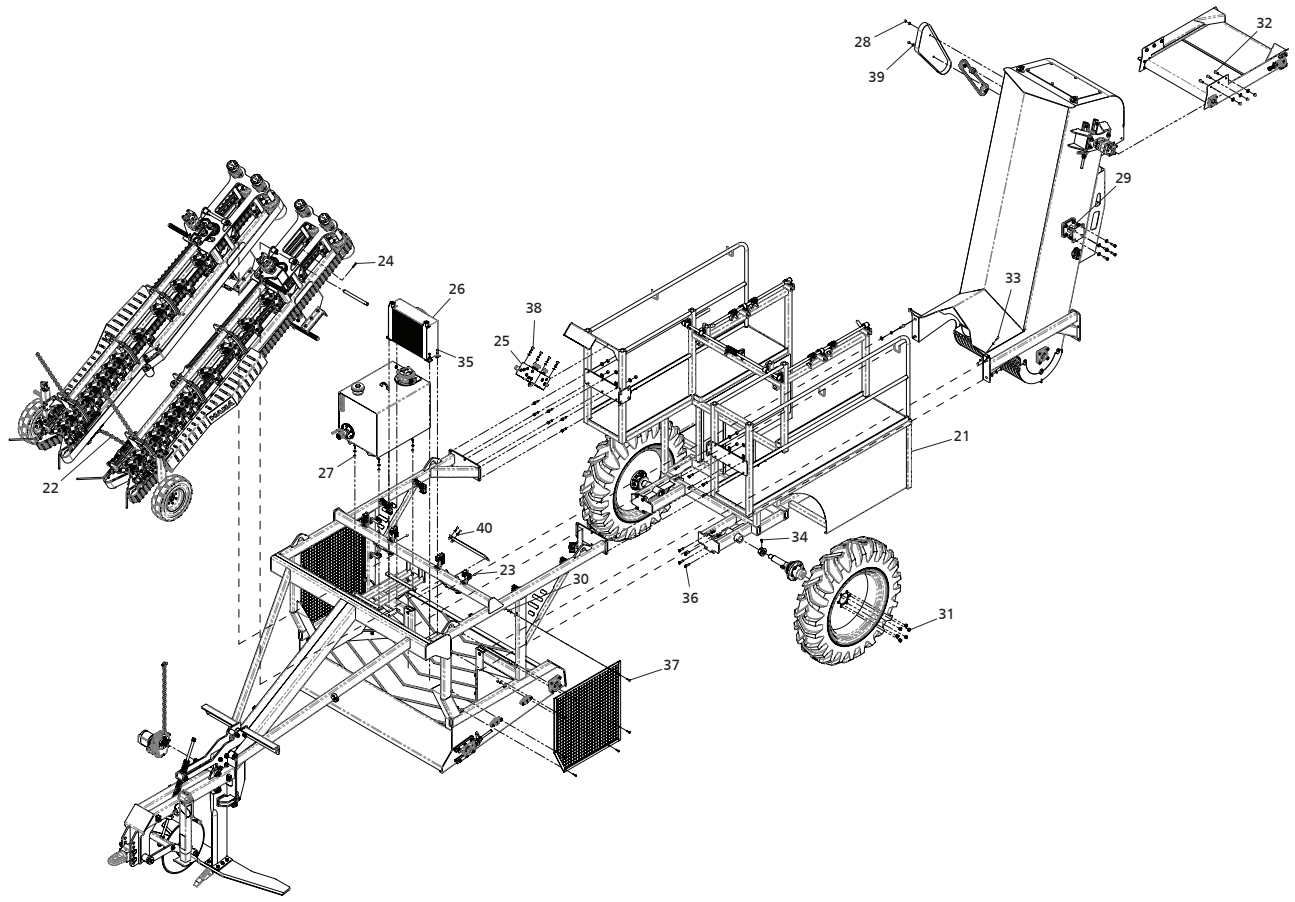
Item	Amount	Product Code	Product Description
01	2	800.003.0006	Washer Ø76 x Ø40mm x 5/16".
02	2	800.014.1556	Plate 100 x 485mm x 1/4" with oblong.
03	1	800.015.0140	Cassava harvester complete chassis.
04	2	800.017.0010	Complete hub - disc harrow wheel.
05	2	800.025.0007	Wheel shaft nut with hole.
06	1	800.026.0082	Smaller/larger elevator transmission protection.
07	1	800.027.0013	Left mounted wheel Águia 12.4-28 6 plies.
08	1	800.027.0033	Right mounted wheel Águia 12.4-28 6 plies.
09	1	800.050.0052	Chain ASA 50 with 81 links (1290mm) + reduction.
10	1	800.065.0123	Gear ASA50 16Z internal Ø25.5MM - zinc plated.
11	2	800.065.0193	Pin Ø1" x 314mm with hole - zinc plated.
12	1	800.065.0194	Gear ASA50 20Z internal Ø25.5MM - zinc plated.
13	1	800.070.0268	Maná gearbox + gear pump set.
14	1	800.091.0009	Cassava harvester right protective screen.
15	1	800.091.0010	Cassava harvester left protection screen.
16	1	800.093.0004	Maná complete oil reservoir.
17	1	800.099.0003	Maná complete elevator conveyor belt.
18	1	800.102.0002	Maná complete elevator.
19	1	800.103.0001	Cassava harvester right side line.
20	1	800.103.0002	Cassava harvester left side line.





COMPLETE MANÁ

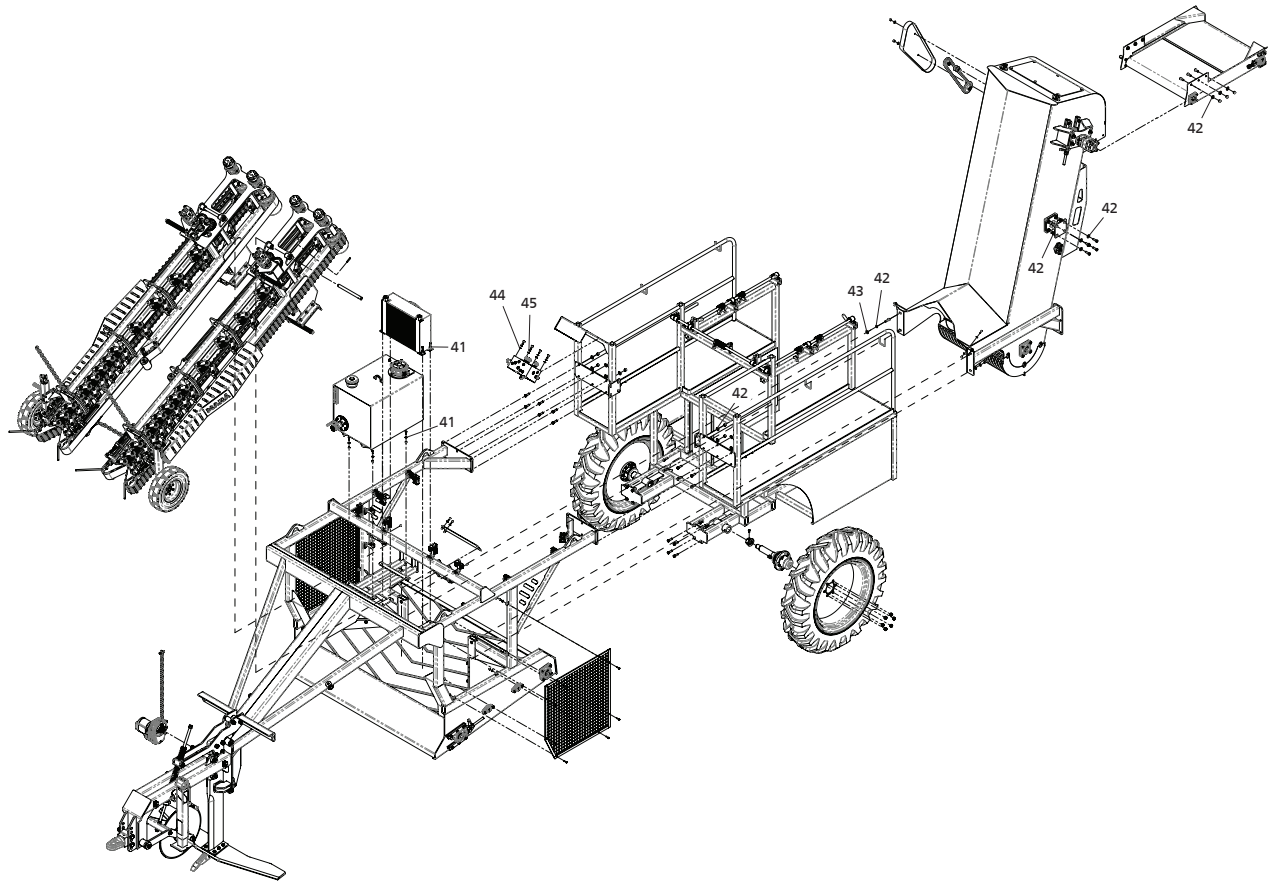
Item	Amount	Product Code	Product Description
21	1	800.074.0045	Complete cassava harvester platform.
22	1	800.501.0008	Starter line limiter.
23	2	010.04.0002	Grease fitting 1/8" BSP - straight.
24	4	010.06.0002	Elastic pin 10mm x 50mm.
25	1	019.04.0007	Command block Y-VM1534 (Maná).
26	1	022.71.0002	Radiator AR OL 1" 150LTS 12V 12000 KCAL/H (WXA1417).
27	8	008.02.0002	Nylon parlock nut G2 UNC 5/16" CHV 1/2" ZB PES 18-FPP.
28	2	008.02.0007	Nylon parlock nut G2 UNC 3/8" CHV- 9/16" ZB 16-FPP.
29	34	008.02.0008	Nylon parlock nut G2 UNC 1/2" CHV 3/4" ZB PES 20-FPP.
30	23	008.02.0011	Nylon parlock nut G2 UNC 1/4" CHV 7/16" ZB PES 20-FPP.
31	12	008.04.0001	Tapered hex nut G2 UNF 5/8" CHV 1.1/16" ZB ALT. 17mm.
32	6	009.01.0014	Hex screw 1/2" x 1.1/4" RI G2 UNC ZB.
33	8	009.01.0021	Hex screw 1/4" x 1" RI G2 UNC ZB.
34	2	009.01.0040	Hex screw 3/8" x 3/4" RI G2 UNC ZB.
35	8	009.01.0041	Hex screw 5/16" x 1" RI G2 UNC ZB.
36	32	009.01.0110	Hex screw 1/2" x 1.3/4" RI G5 UNC ZB.
37	16	009.01.0117	Hex screw 1/4" X 1 1/4" RI G2 UNC ZB.
38	4	009.01.0137	Hex screw M10 x 25mm INOX 18.8 (304).
39	4	010.01.0003	Heavy duty flat washer 3/8" ZB.
40	32	010.01.0004	Heavy duty flat washer 1/4" ZB.





COMPLETE MANÁ

Item	Amount	Product Code	Product Description
41	8	010.01.0008	Heavy duty flat washer 5/16" ZB.
42	52	010.01.0009	Heavy duty flat washer 1/2" ZB.
43	4	010.01.0012	Heavy duty lock washer 1/2" ZB.
44	4	010.01.0036	Stainless steel flat washer M10.
45	4	010.01.0037	Stainless steel lock washer M10.





02

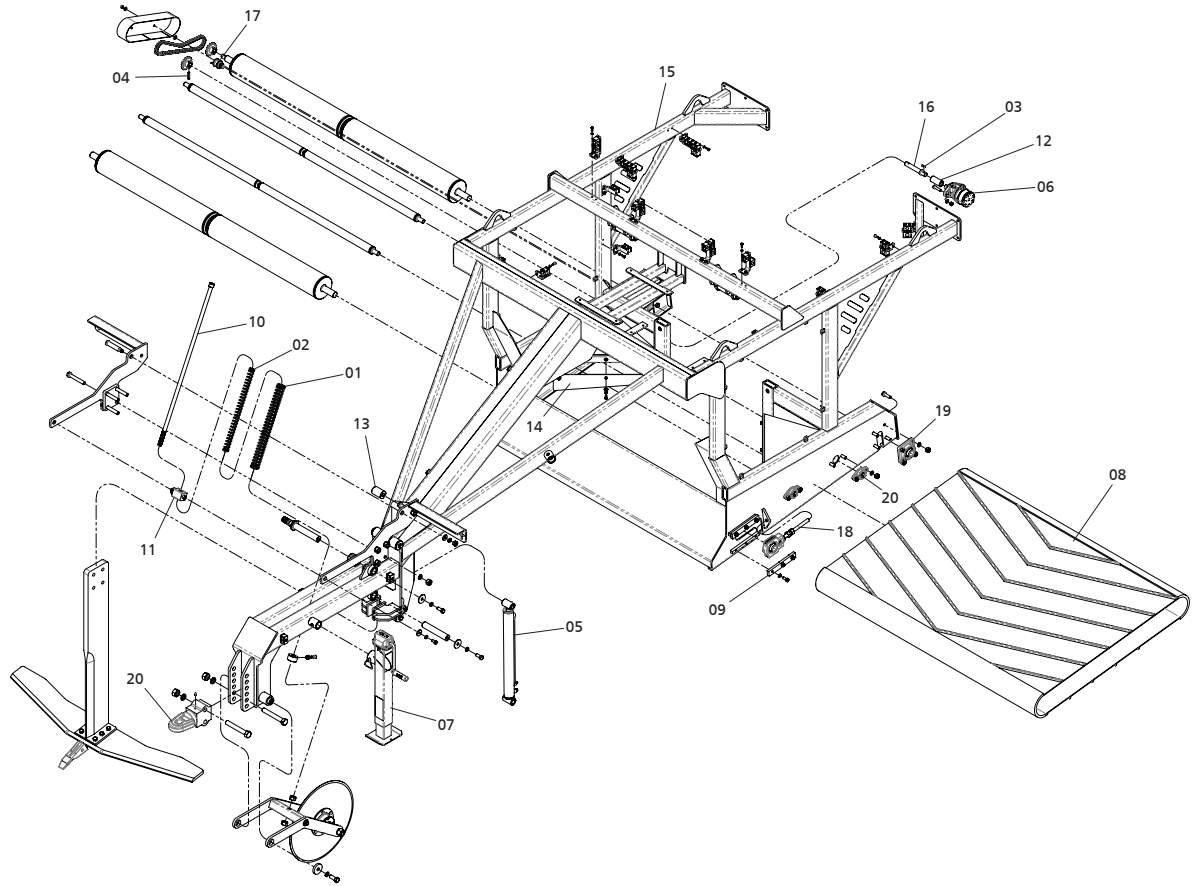
CHASSIS COMPLETE



Complete front chassis with hitch header, cutting disc, digging shank and conveyor belt.

COMPLETE CHASSIS

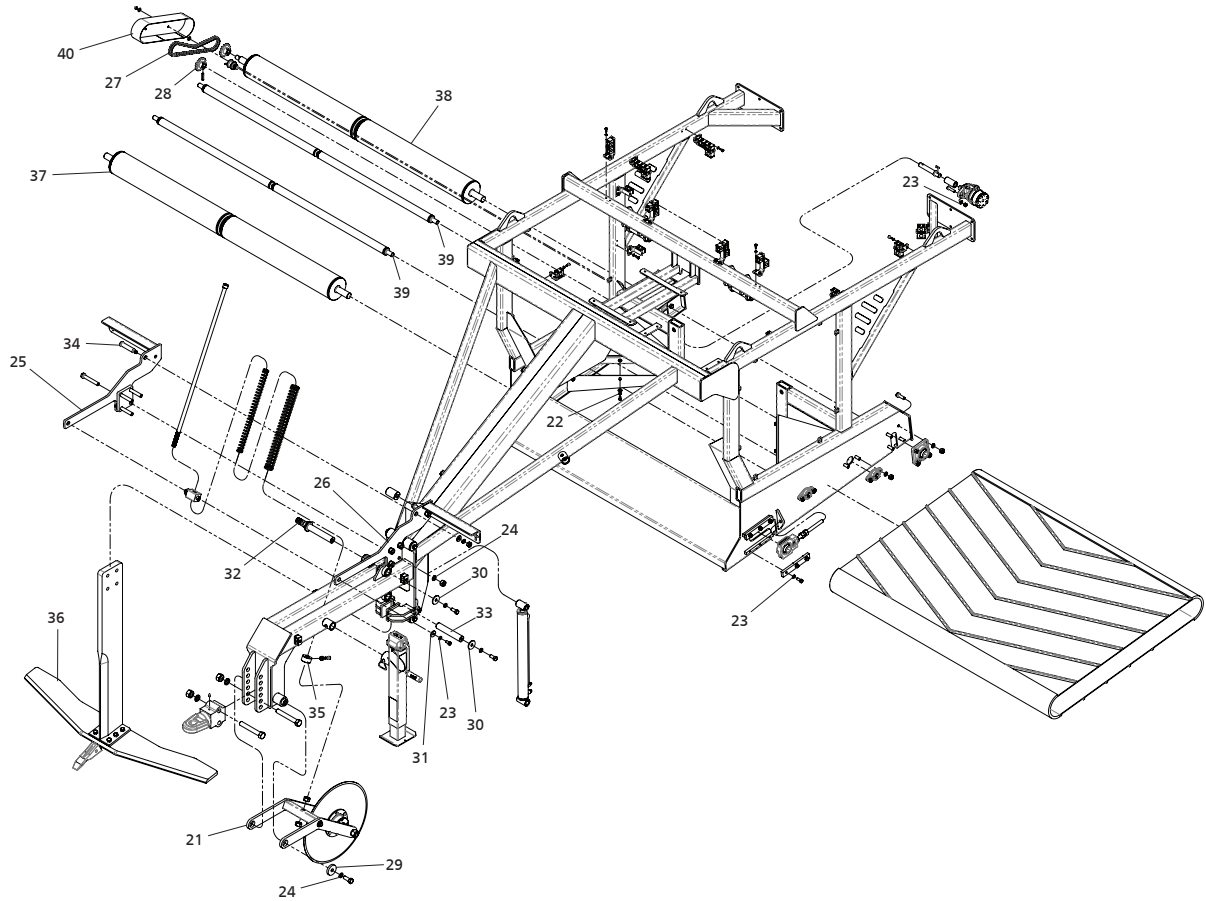
Item	Amount	Product code	Product description
01	1	005.01.0026	Helical compression spring Ø41 x Ø55 x 561.5mm BØ7 P20.
02	1	005.01.0025	Helical compression spring Ø26 x Ø37 x 559.5mm BØ5.5 P20.
03	1	010.02.0015	Square type-a key 1/4" x 28mm treated 43-52 HRC.
04	2	010.06.0002	Elastic pin 10mm x 50mm.
05	1	019.01.0039	Hydraulic cylinder Ø 2" x Ø1 1/4 x stroke 557mm UNF 9/16" 18FPP.
06	1	020.02.0016	Motor R cylinder shaft. 25.4MM R7/8 UNF (M-LHR-200-C4).
07	1	022.12.0008	Cassava harvester mechanical jack.
08	1	022.91.0004	PVC belt 350 BK GL 2874 x 1930mm with guide and V cleat.
09	4	800.004.0105	Conveyor belt adjustment bar.
10	1	800.065.0196	Adjustment bar Ø7/8" x 1100mm with bushing - zinc plated.
11	1	800.004.0250	Square bar 2" x 73mm with recess and hole.
12	1	800.006.0349	Bushing Ø25.5 x Ø38 x 80mm with keyway.
13	1	800.006.0351	Bushing Ø20mm x Ø2" x 76mm.
14	2	800.014.1439	Conveyor belt scraper plate.
15	1	800.015.0139	Cassava harvester chassis.
16	1	800.016.0426	Larger cassava harvester belt shaft.
17	1	800.019.0013	Texugo conveyor belt tensioner.
18	2	800.019.0015	IDAC complete belt tensioner.
19	2	800.021.0027	Complete bearing - F208 / UC208.
20	6	8,000,210,080	Bearing FL 205 with roller UC 205-16.





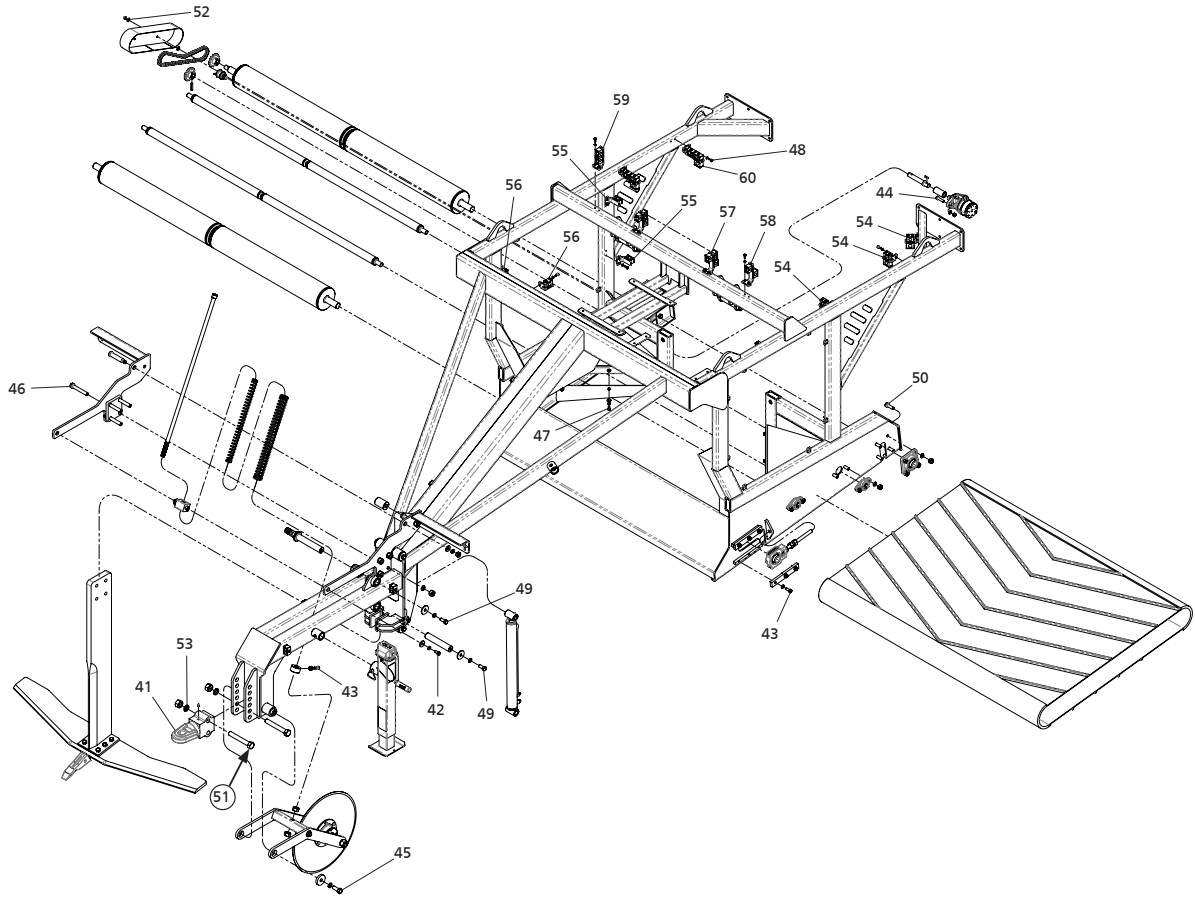
COMPLETE CHASSIS

Item	Amount	Product code	Product description
21	1	800.041.0360	Cassava harvester complete bracket with 22" disc.
22	6	010.01.0010	Heavy duty lock washer 3/8" ZB.
23	16	010.01.0012	Heavy duty lock washer 1/2" ZB.
24	7	010.01.0013	Heavy duty lock washer 3/4" ZB.
25	1	800.041.0368	Right uprooter fastener bracket.
26	1	800.041.0369	Left uprooter fastener bracket.
27	1	800.050.0051	Chain ASA 50 with 62 links + reduction.
28	2	800.065.0123	Gear ASA50 16Z internal Ø25.5MM - zinc plated.
29	2	800.065.0182	Washer Ø20.5 x Ø70 x 1/2" - zinc plated.
30	7	800.065.0183	Washer Ø16.5 x Ø58mm x 3/16" - zinc plated.
31	2	800.065.0184	Washer Ø13.5 x Ø40mm x 3/16" - zinc plated.
32	1	800.065.0185	Hydraulic pump bracket slotted shaft - zinc plated.
33	3	800.065.0186	Pin Ø1.1/2" x 208mm - zinc plated.
34	2	800.065.0188	Cassava harvester cylinder mounting pin - ZB.
35	1	800.065.0195	Bushing Ø22.5 x Ø60 x 30mm milled and threaded - zinc plated.
36	1	800.101.0001	Cassava harvester uprooter.
37	1	800.553.0137	Larger belt front roller.
38	1	800.553.0138	Larger belt rear roller.
39	2	800.553.0139	Larger center belt roller.
40	1	800.558.0019	Larger belt transmission protective cover.



COMPLETE CHASSIS

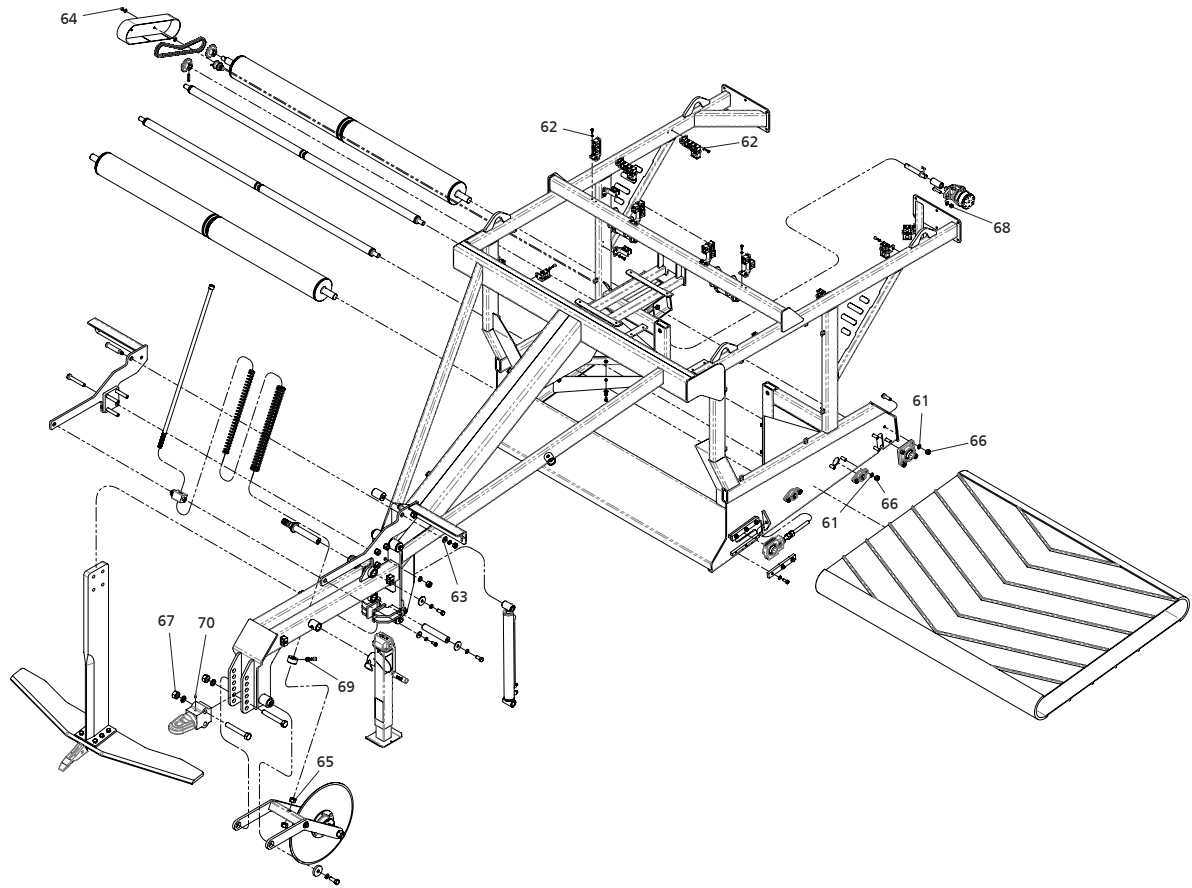
Item	Amount	Product code	Product description
41	1	800.607.0004	Oblong eyelet complete hitch shackle.
42	2	009.01.0011	Hex screw 1/2" x 1" RI G2 UNC ZB.
43	13	009.01.0014	Hex screw 1/2" x 1.1/4" RI G2 UNC ZB.
44	2	009.01.0016	Hex screw 1/2" x 2" RI G5 UNF ZB.
45	2	009.01.0023	Hex screw 3/4" x 2" RI G5 UNC ZB.
46	5	009.01.0031	Hex screw Ø3/4" x 5" RP G5 UNC ZB.
47	6	009.01.0034	Hex screw 3/8" x 1" RI G5 UNC ZB.
48	28	009.01.0042	Hex screw 5/16" x 3/4" RI G2 UNC ZB.
49	7	009.01.0044	Hex screw 5/8" X 1 1/2" RI G5 UNC ZB.
50	8	009.01.0046	Hex screw 5/8" x 2" RI G5 UNC ZB.
51	2	009.01.0078	Hex screw 1" x 7" RP G5 UNC ZB.
52	10	010.01.0003	Heavy duty flat washer 3/8" ZB.
53	2	010.01.0007	Heavy duty lock washer 1" ZB.
54	3	800.041.0362	Complete bracket with 1 KV-22 and 1 KV-18.
55	2	800.041.0363	Complete bracket with 1 KVD-15.
56	3	800.041.0364	Complete bracket with 1 KV-22.
57	2	800.041.0365	Complete bracket with 1 KVD-18, 1 KV-15 and 1 KV18.
58	1	800.041.0366	Complete bracket with 1 KV-15 and 1 KV-18.
59	1	800.041.0367	Complete bracket with KV-15.
60	2	800.041.0361	Complete bracket with 2 KVD-15 and 1 KV-22.



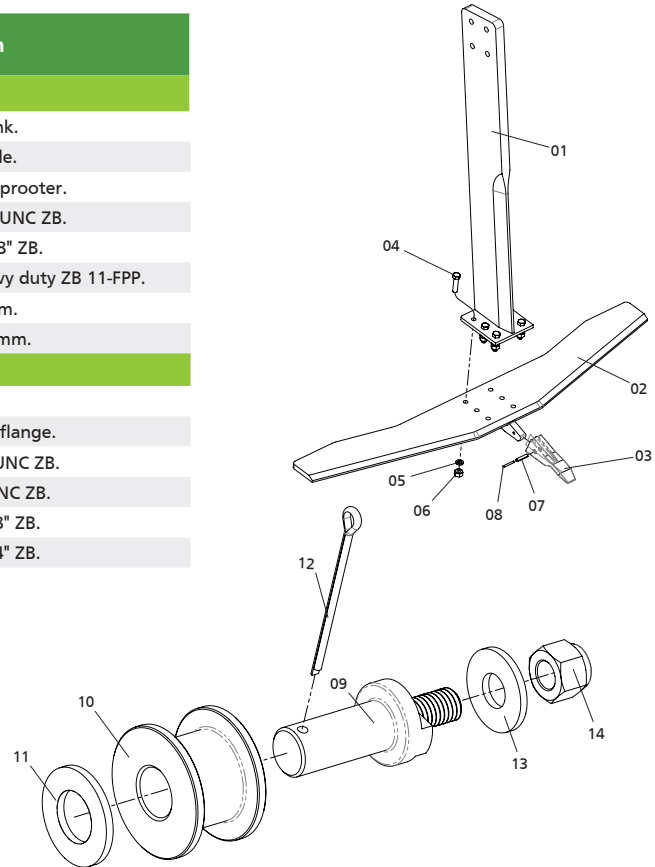


COMPLETE CHASSIS

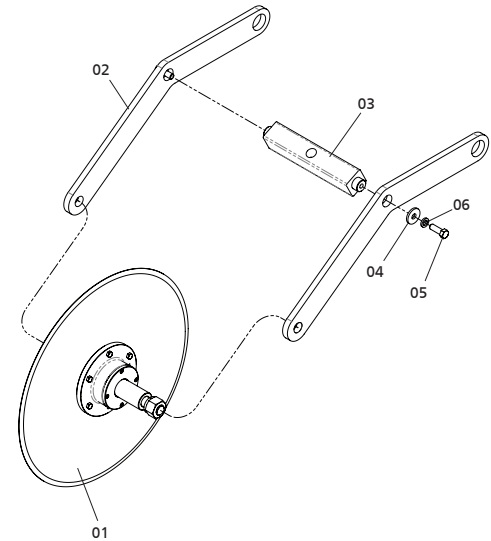
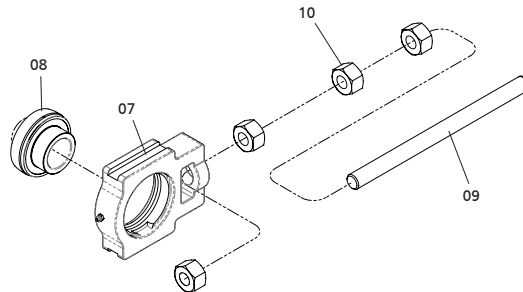
Item	Amount	Product code	Product description
61	27	010.01.0014	Heavy duty lock washer 5/8" ZB.
62	28	010.01.0015	Heavy duty lock washer 5/16" ZB.
63	2	010.01.0019	Heavy duty flat washer 5/8" ZB.
64	2	008.02.0007	Nylon parlock nut G2 UNC 3/8" CHV- 9/16" ZB 16-FPP.
65	2	008.01.0007	Hex nut G2 UNC 7/8" CHV- 1 7/16" heavy duty ZB 9-FPP.
66	20	008.01.0008	Hex nut G2 UNC 5/8" CHV- 1 1/16" heavy duty ZB 11-FPP.
67	2	008.01.0009	Hex nut G2 UNC 1" CHV 1 .5/8" heavy duty ZB 8-FPP.
68	2	008.01.0016	Hex nut G5 UNF 1/2" CHV 3/4" ZB 20-FPP.
69	1	008.01.0020	Hex nut G2 UNC 1/2" CHV 7/8" heavy duty 13-FPP.
70	1	010.04.0002	Grease fitting 1/8" BSP - straight.



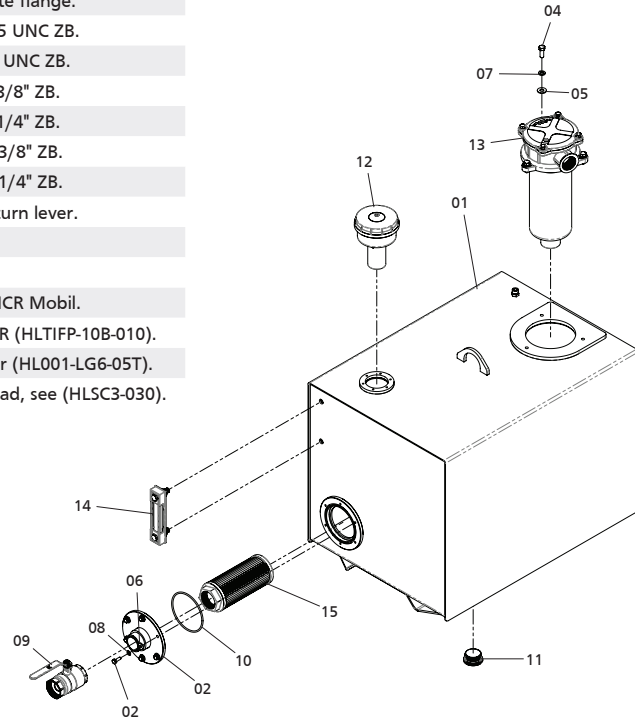
Item	Amount	Product code	Product description
Cassava harvester uprooter - item 36 page 44			
01	1	800.503.0034	Complete uprooter shank.
02	1	800.047.0034	Complete uprooter blade.
03	1	800.058.0012	Hardened shank tip (Boot) - uprooter.
04	6	009.01.0048	Hex screw 5/8 x 2.1/2" RP G5 UNC ZB.
05	6	010.01.0014	Heavy duty lock washer 5/8" ZB.
06	6	008.01.0008	Hex nut G2 UNC 5/8" CHV- 1 1/16" heavy duty ZB 11-FPP.
07	1	010.06.0002	Elastic pin 10mm x 50mm.
08	1	010.06.0004	Heavy elastic pin Ø6 x 50mm.
Conveyor belt tensioner - Item 17 page. 42			
09	1	8.000.930.003	Maná oil reservoir.
10	1	8.005.120.024	Maná oil reservoir complete flange.
11	6	009.01.0022	Hex screw 1/4" x 3/4" RI G5 UNC ZB.
12	3	009.01.0034	Hex screw 3/8" x 1" RI G5 UNC ZB.
13	3	010.01.0003	Heavy duty flat washer 3/8" ZB.
14	6	010.01.0004	Heavy duty flat washer 1/4" ZB.



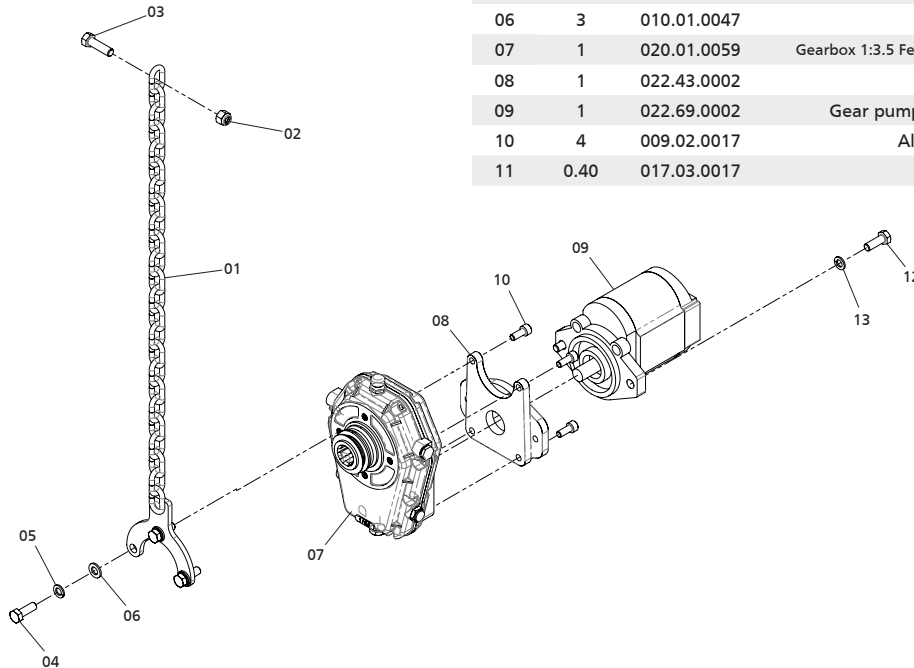
Item	Amount	Product code	Product description
Cassava harvester complete bracket with 22" disc - Item 21 page. 44			
01	1	800.017.0039	Mounted hub with cassava harvester 22" disc.
02	2	800.005.0036	Cassava harvester disc bracket arm.
03	1	800.004.0247	Square bar 2" x 275mm with hole.
04	2	800.065.0184	Washer Ø13.5 x Ø40mm x 3/16" - zinc plated.
05	2	009.01.0109	Hexagonal screw 1/2" x 1.1/2" RI G5 UNC ZB.
06	2	010.01.0012	Heavy duty lock washer 1/2" ZB.
IDAC complete belt tensioner - Item 18 page 42			
07	1	012.03.0002	T 208 bearing
08	1	006.01.0013	UC 208-24 bearing - 1 1/2 shaft.
09	1	800.004.0196	Threaded bar Ø3/4" x 280mm.
10	4	008.01.0006	Hex nut G2 UNC 3/4" CHV 1 1/4" heavy duty ZB 10-FPP.



Item	Amount	Product code	Product description
Maná complete oil reservoir - Item 16 page 34			
01	1	8.000.930.003	Maná oil reservoir.
02	1	8.005.120.024	Maná oil reservoir complete flange.
03	6	009.01.0022	Hex screw 1/4" x 3/4" RI G5 UNC ZB.
04	3	009.01.0034	Hex screw 3/8" x 1" RI G5 UNC ZB.
05	3	010.01.0003	Heavy duty flat washer 3/8" ZB.
06	6	010.01.0004	Heavy duty flat washer 1/4" ZB.
07	3	010.01.0010	Heavy duty lock washer 3/8" ZB.
08	6	010.01.0011	Heavy duty lock washer 1/4" ZB.
09	1	019.17.0005	1.1/2" ball valve with 1/4 turn lever.
10	1	022.03.0015	O-ring 2244.
11	1	022.18.0004	Plug 1.1/4 BSP.
12	1	022.32.0002	Non-slip filling nozzle 10MICR Mobil.
13	1	022.74.0006	Return filter 150LTS 1.1/4BSP 10MICR (HLTIFP-10B-010).
14	1	022.90.0001	Level with 127mm E/C thermometer (HL001-LG6-05T).
15	1	022.74.0007	Suction filter 120L/Min, 11/2BSP thread, see (HLSC3-030).



Item	Amount	Product code	Product description
Maná gearbox + gear pump set - Item 13 page 34			
01	1	800.050.0050	Maná pump mounting chain.
02	1	008.02.0008	Nylon parlock nut G2 UNC 1/2" CHV 3/4" ZB PES 20-FPP.
03	1	009.01.0015	Hex screw 1/2" x 1.3/4" RI G2 UNC ZB.
04	5	009.01.0104	Hex screw M12 x 35mm - steel.
05	5	010.01.0045	Lock washer M12.
06	3	010.01.0047	Flat washer M12.
07	1	020.01.0059	Gearbox 1:3.5 Female with Ret. + coupling 10014 with flange SAE B.
08	1	022.43.0002	Flange SAE B.
09	1	022.69.0002	Gear pump 3PF43LJ42S05RBB 43CC SAE B 13T RH.
10	4	009.02.0017	Allen screw C/C M10 x 25mm 8.8.
11	0.40	017.03.0017	Oil Lubrax GL 5 SAE 140.



Add 0.4L of oil code
 017.03.0017 in
 the gearbox code.
 020.01.0059, item 15.

03

SIDE LINE RIGHT



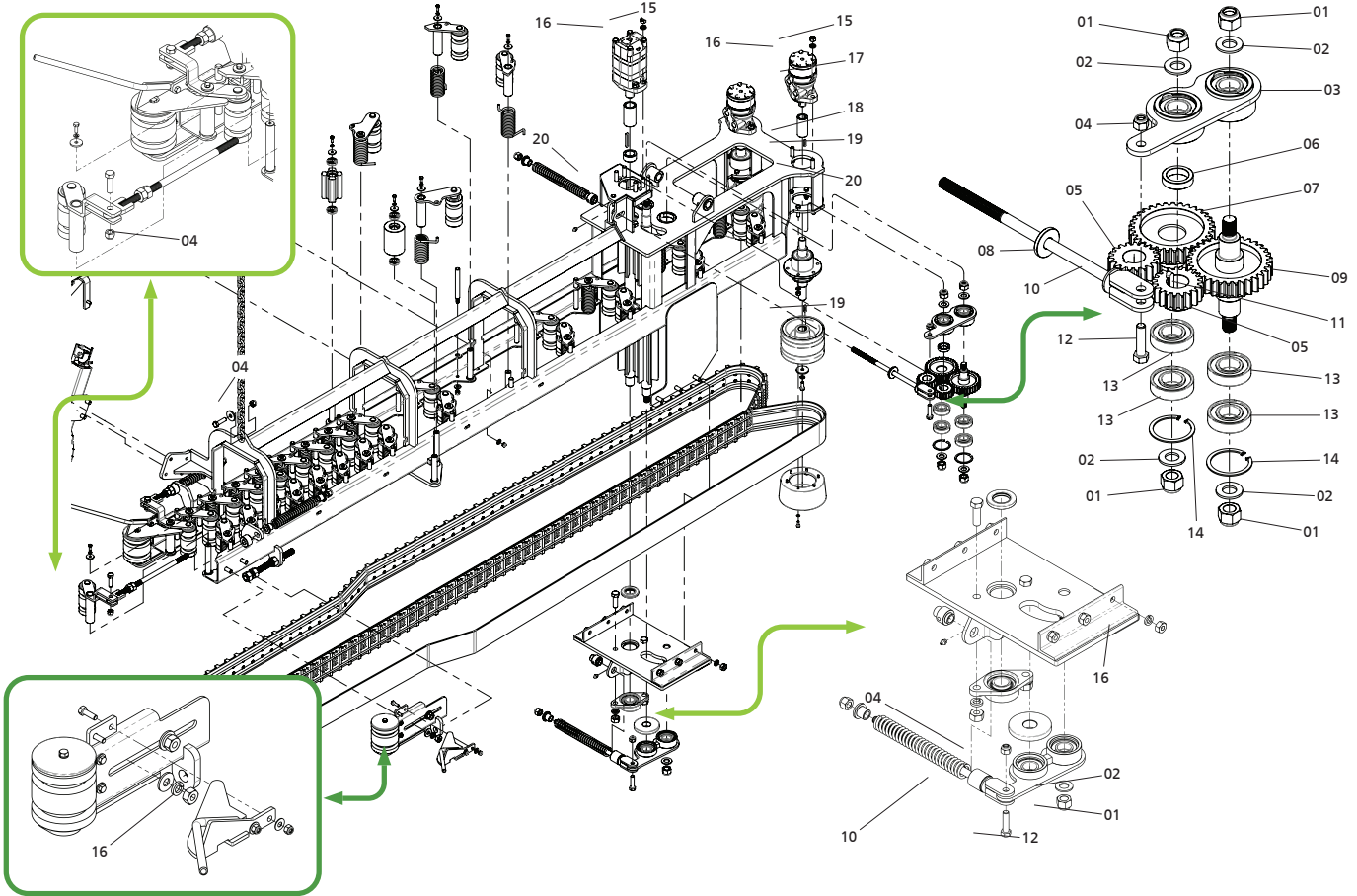
Full harvesting line with conveyors, stretchers, control wheel, separator.





RIGHT SIDE LINE

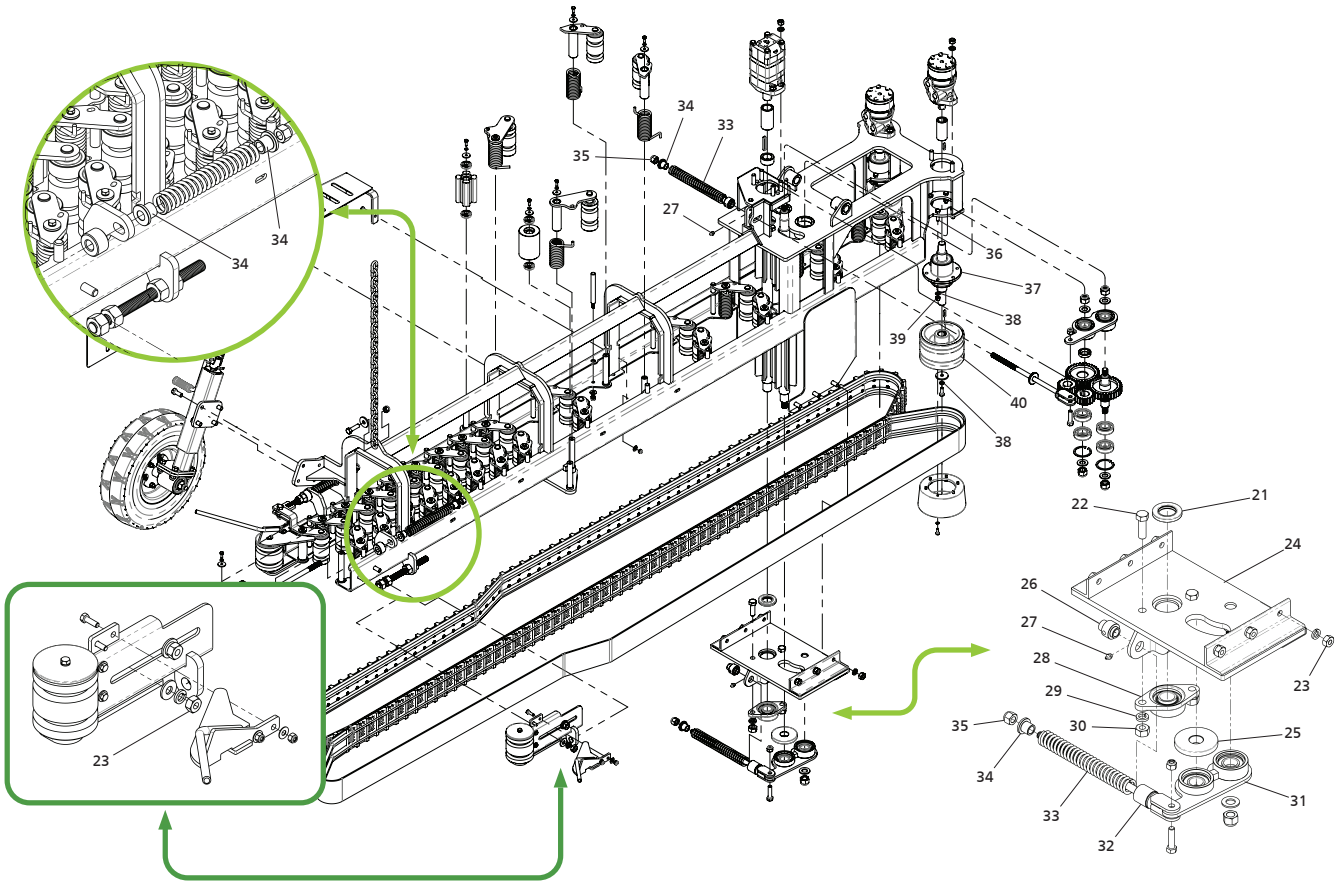
Item	Amount	Product code	Product description
01	6	008.02.0005	Nylon parlock nut G2 UNC 3/4" CHV 1.1/16" ZB PES 10-FPP.
02	6	010.01.0005	Heavy duty flat washer 3/4" ZB.
03	1	800.019.0037	Separator complete upper right tensioner.
04	5	008.02.0008	Nylon parlock nut G2 UNC 1/2" CHV 3/4" ZB PES 20-FPP.
05	2	022.22.0004	Gear 19Z - Maná.
06	1	800.006.0373	Bushing Ø32 x Ø44.5mm x 11mm.
07	1	800.016.0444	Shaft 106mm with gear 33Z.
08	1	800.003.0136	Nylon washer Ø17 x Ø45 x 6mm.
09	1	800.016.0437	Shaft with gear 33Z.
10	2	800.065.0192	Separator smaller tensioner - zinc plated.
11	1	010.02.0016	Square type-a 5/16" x 28mm treated 43-52 HRC.
12	2	009.01.0134	Hex screw 1/2" x 2" RP G8 UNC ZB.
13	4	006.01.0042	Bearing 6206 ZZ.
14	2	022.02.0016	Retaining ring I-62.
15	8	008.01.0016	Hex nut G5 UNF 1/2" CHV 3/4" ZB 20-FPP.
16	22	010.01.0012	Heavy duty lock washer 1/2" ZB.
17	2	020.02.0016	Motor R cylinder shaft. 25.4mm R7/8 UNF (M-LHR-200-C4).
18	2	800.006.0349	Bushing Ø25.5 x Ø38 x 80mm with keyway.
19	4	010.02.0015	Square key type-a 1/4" x 28mm treated 43-52 HRC.
20	8	009.01.0016	Hex screw 1/2" x 2" RI G5 UNF ZB.





RIGHT SIDE LINE

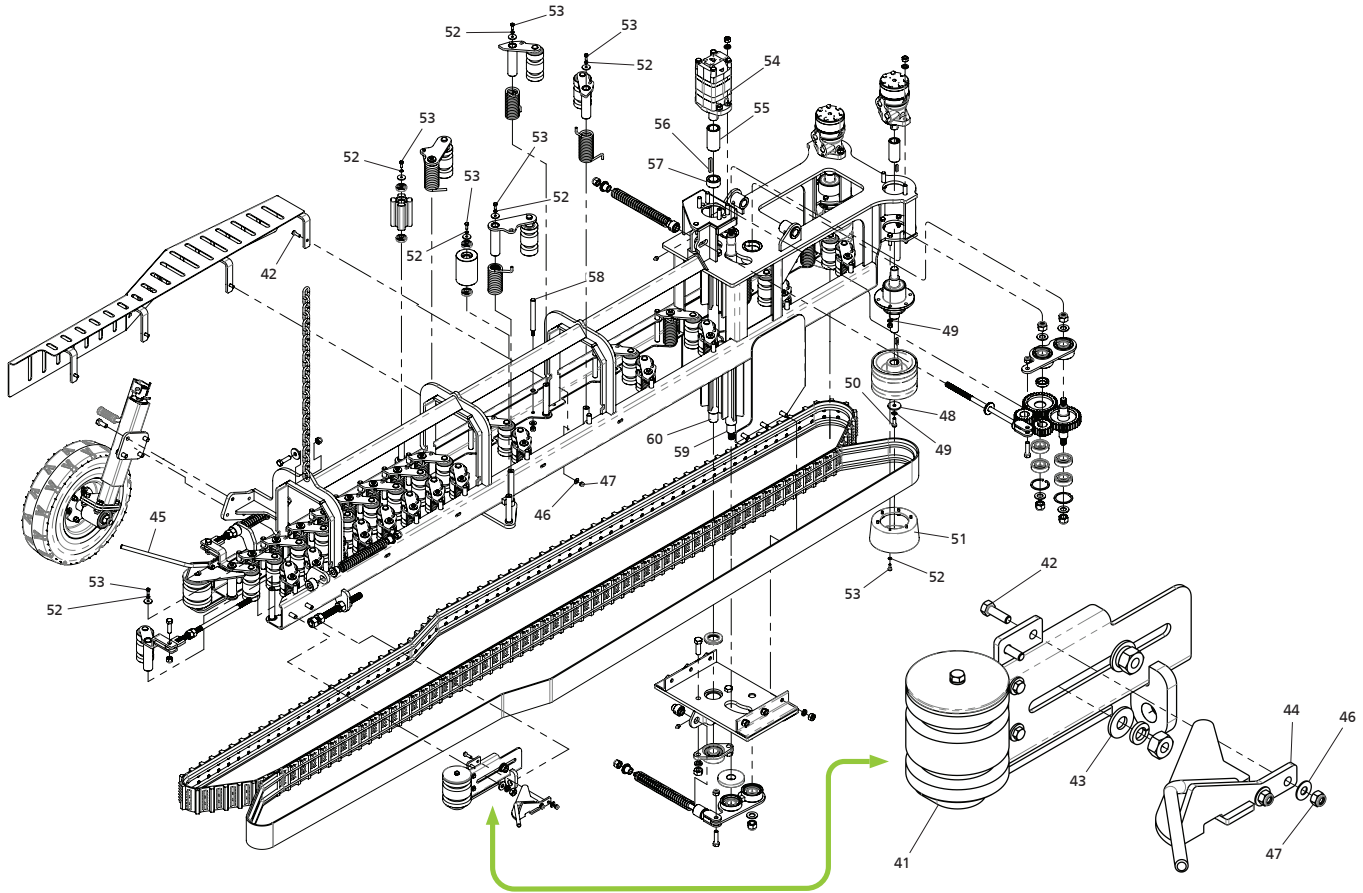
Item	Amount	Product code	Product description
21	1	007.01.0030	Retainer 38mm x 63.5mm x 8mm BRG.
22	4	009.01.0046	Hex screw 5/8" x 2" RI G5 UNC ZB.
23	10	008.01.0020	Hex nut G2 UNC 1/2" CHV 7/8" heavy duty 13-FPP.
24	1	800.041.0387	Lower right separator bracket.
25	1	800.010.0007	Separator tensioner protection cap.
26	2	800.065.0198	Bushing Ø16.5 x Ø36 x 42.5mm - zinc plated.
27	2	010.04.0002	Grease fitting 1/8" BSP - straight.
28	2	800.021.0111	Bearing FL 206 with roller UC 206-20.
29	4	010.01.0014	Heavy duty lock washer 5/8" ZB.
30	4	008.01.0008	Hex nut G2 UNC 5/8" CHV- 1 1/16" heavy duty ZB 11-FPP.
31	1	800.019.0039	Separator complete lower right tensioner.
32	1	800.006.0375	Nylon bushing Ø17 x Ø40 x 38.5mm.
33	2	005.01.0034	Helical compression spring Ø24.5 x Ø35.5 x 261mm BØ5.5 P10.
34	6	800.065.0181	Bushing Ø16.5 x Ø24 x 25mm - zinc plated.
35	4	008.02.0004	Nylon parlock nut G2 UNC 5/8" CHV 15/16" ZB PES 11- FPP.
36	12	009.01.0035	Hex screw 3/8" x 1.1/2" RI G2 UNC ZB.
37	2	800.017.0040	Maná complete transmission hub
38	14	010.01.0010	Heavy duty lock washer 3/8" ZB.
39	12	008.01.0013	Hex nut G2 UNC 3/8" CHV 11/16" heavy duty ZB 16-FPP.
40	2	800.081.0004	Pulley Ø150 x 105mm with 2 channels - processed.





RIGHT SIDE LINE

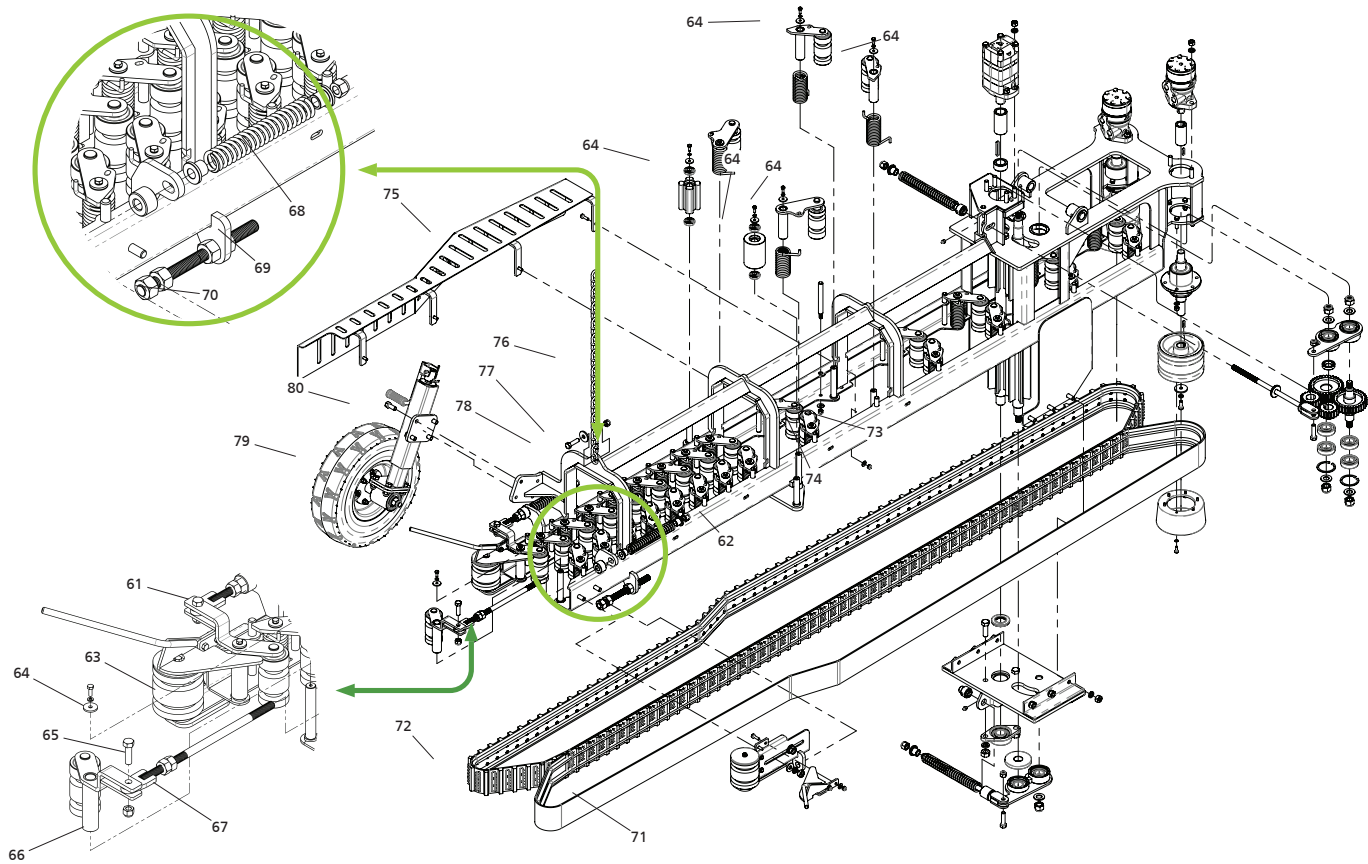
Item	Amount	Product code	Product description
41	1	800.019.0035	Front complete left tensiones.
42	8	009.01.0041	Hex screw 5/16" x 1" RI G2 UNC ZB.
43	4	010.01.0009	Heavy duty flat washer 1/2" ZB.
44	1	800.065.0190	Starter line left guide - zinc plated.
45	1	800.065.0189	Starter line right guide - zinc plated.
46	8	010.01.0008	Heavy duty flat washer 5/16" ZB.
47	8	008.02.0002	Nylon parlock nut G2 UNC 5/16" CHV 1/2" ZB PES 18-FPP.
48	2	800.065.0180	Washer Ø11 x Ø45mm x 3/16" - zinc plated.
49	14	010.01.0010	Heavy duty lock washer 3/8" ZB.
50	2	009.01.0034	Hex screw 3/8" x 1" RI G5 UNC ZB.
51	2	800.024.0025	Maná line tapered pulley.
52	46	010.01.0011	Heavy duty lock washer 1/4" ZB.
53	46	009.01.0022	Hex screw 1/4" x 3/4" RI G5 UNC ZB.
54	1	020.02.0015	Motor S reinforced shaft 31.7MM R7/8 (M-LHSYF-250-C4B).
55	1	800.006.0362	Bushing Ø31.9 x 85mm with keyway.
56	1	010.02.0017	Square key type-a 5/16" x 60mm treated 43-52 HRC.
57	1	800.006.0374	Bushing Ø32 x Ø48 x 23mm.
58	28	800.065.0179	Pin Ø5/8" x 152mm - zinc plated.
59	1	800.016.0433	Separator shaft 900mm.
60	1	800.016.0435	Separator shaft 830mm.





RIGHT SIDE LINE

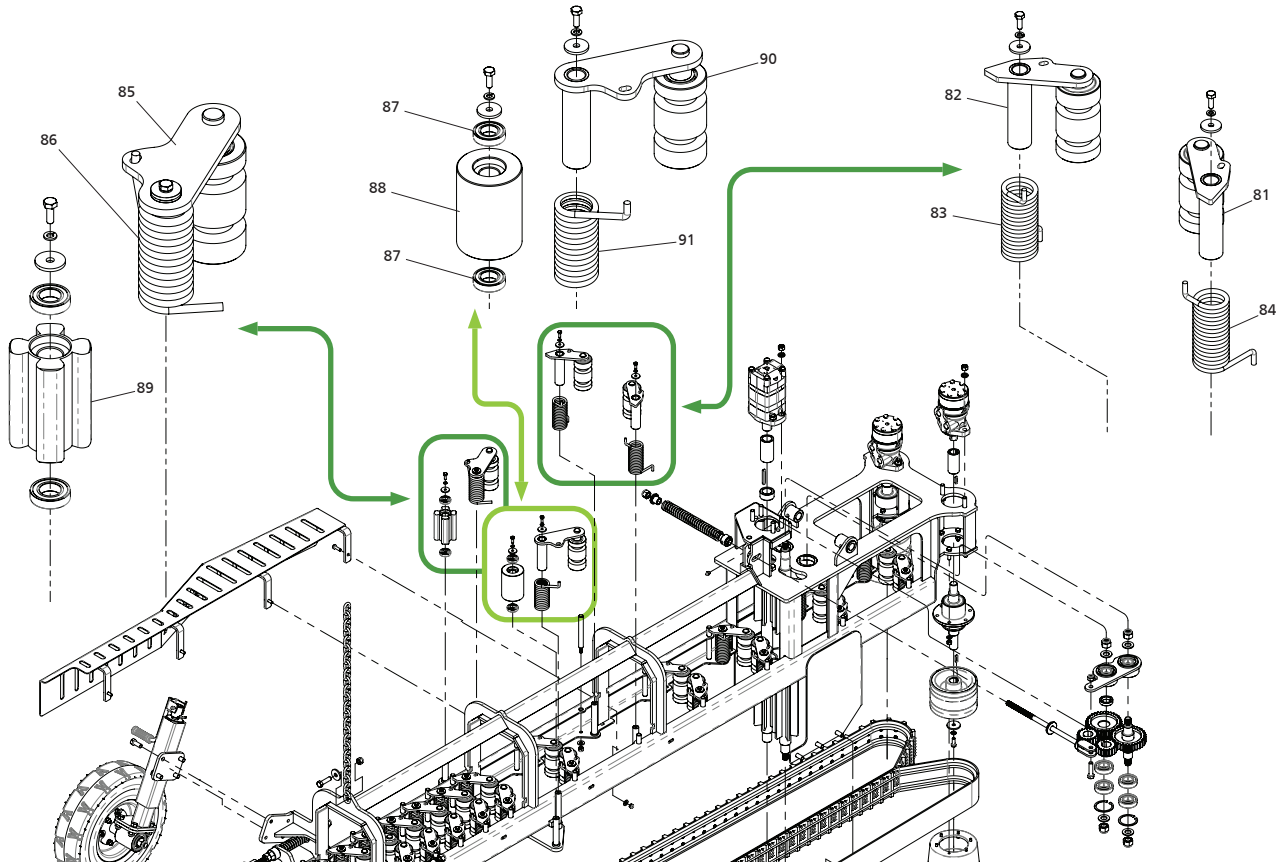
Item	Amount	Product code	Product description
61	1	800.019.0027	Starter line complete front right tensioner.
62	1	800.015.0141	Cassava harvester right line chassis.
63	1	800.019.0033	Front complete right tensioner.
64	34	800.065.0169	Washer Ø7.5 x Ø28mm x 1/8" - zinc plated.
65	3	009.01.0015	Hex screw 1/2" x 1.3/4" RI G2 UNC ZB.
66	1	800.019.0025	Starter line complete front left tensioner.
67	2	800.065.0191	Front thread tensioner - zinc plated.
68	2	005.01.0027	Helical compression spring Ø24.5 x Ø35.5 x 211mm BØ5.5 P10.
69	2	800.500.0074	Threaded rod Ø3/4" x 247mm.
70	8	008.01.0006	Hex nut G2 UNC 3/4" CHV 1 1/4" heavy duty ZB 10-FPP.
71	1	022.91.0001	PVC belt VG 530 6700 x 100mm with toothed guide.
72	1	800.562.0003	Maná line claw strap.
73	28	010.01.0003	Heavy duty flat washer 3/8" ZB.
74	28	008.02.0007	Nylon parlock nut G2 UNC 3/8" CHV- 9/16" ZB 16-FPP.
75	1	800.026.0080	Starter line right guard.
76	1	022.06.0019	Chain 5/16" with 24 links.
77	1	800.065.0184	Washer Ø13.5 x Ø40mm x 3/16" - zinc plated.
78	3	009.01.0015	Hex screw 1/2" x 1.3/4" RI G2 UNC ZB.
79	1	800.027.0049	Starter line wheel with complete jack.
80	10	009.01.0014	Hex screw 1/2" x 1.1/4" RI G2 UNC ZB.



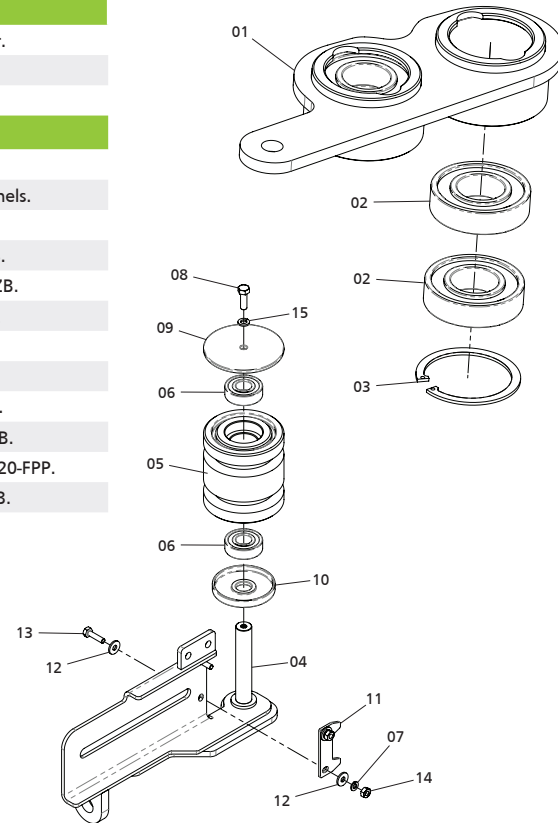


RIGHT SIDE LINE

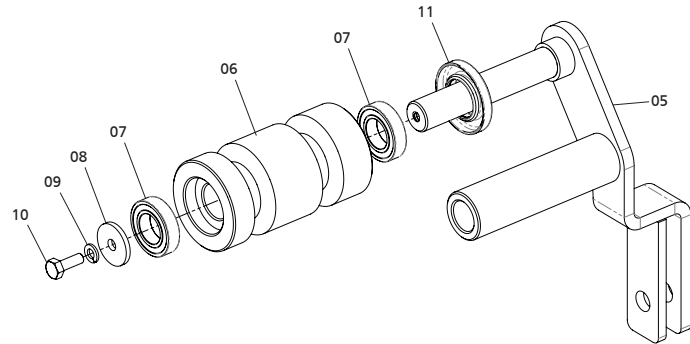
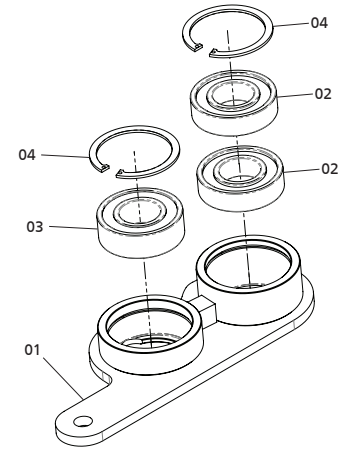
Item	Amount	Product code	Product description
81	14	800.019.0021	Starter line complete lower left tensioner.
82	14	800.019.0023	Starter line complete lower right tensioner.
83	14	005.01.0032	Right torsion helical spring Ø36.5 x Ø49.5 x 113mm BØ6.5 P6.5.
84	14	005.01.0033	Left torsion coil spring Ø36.5 x Ø49.5 x 113mm BØ6.5 P6.5.
85	1	800.019.0029	Starter line complete larger right tensioner.
86	1	005.01.0031	Left torsion coil spring Ø36 x Ø51 x 108mm BØ7.5 P7.5.
87	4	006.01.0049	Bearing 6904 ZZ.
88	1	800.024.0021	Pulley Ø75 x 105mm.
89	1	800.024.0022	Pulley Ø75 x 105 with 4 channels.
90	1	800.019.0031	Starter line complete larger left tensioner.
91	1	005.01.0030	Right torsion helical spring Ø36 x Ø51 x 108mm BØ7.5 P7.5.



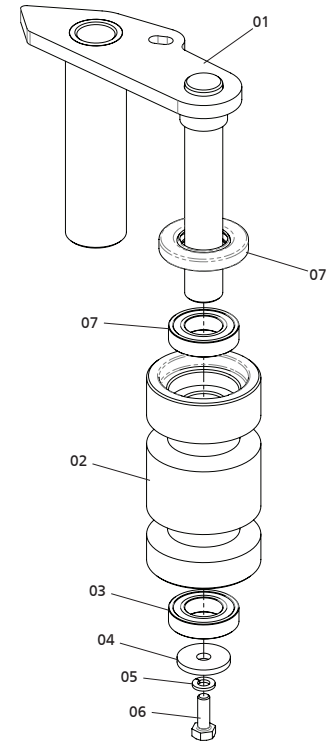
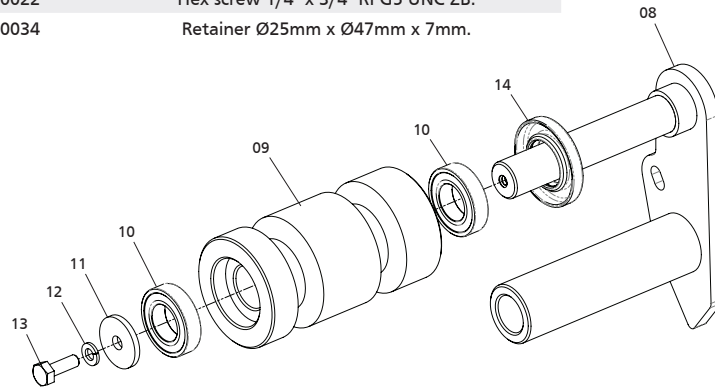
Item	Amount	Product code	Product description
Separator complete upper right tensioner - Item 03 page 56			
01	1	800.019.0036	Separator upper right tensioner.
02	4	006.01.0042	Bearing 6206 ZZ.
03	2	022.02.0016	Retaining ring I-62.
Front complete left tensioner - Item 41 page 60			
04	1	800.019.0034	Line front left tensioner.
05	1	800.024.0023	Pulley Ø100 x 105mm with 2 channels.
06	2	006.01.0005	Bearing 6204 ZZ.
07	2	010.01.0011	Heavy duty lock washer 1/4" ZB.
08	1	009.01.0041	Hex screw 5/16" x 1" RI G2 UNC ZB.
09	1	800.010.0005	Line front tensioner upper cap.
10	1	800.010.0006	Line front tensioner lower cap.
11	1	800.490.0028	Maná front pulley cleaner.
12	4	010.01.0004	Heavy duty flat washer 1/4" ZB.
13	2	009.01.0021	Hex screw 1/4" x 1" RI G2 UNC ZB.
14	2	008.01.0005	Hex nut G2 UNC 1/4" CHV - 7/16" ZB 20-FPP.
15	1	010.01.0015	Heavy duty lock washer 5/16" ZB.



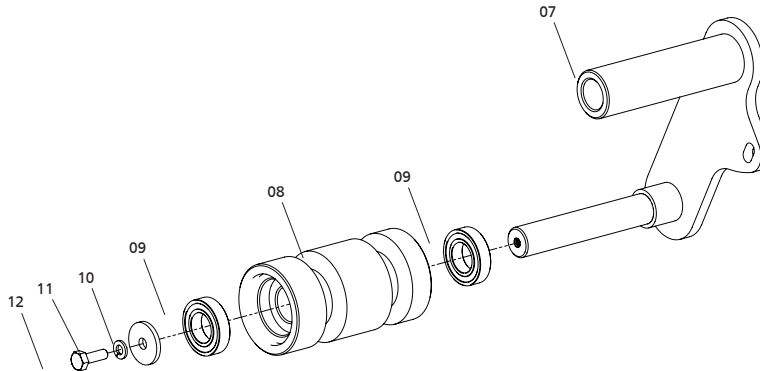
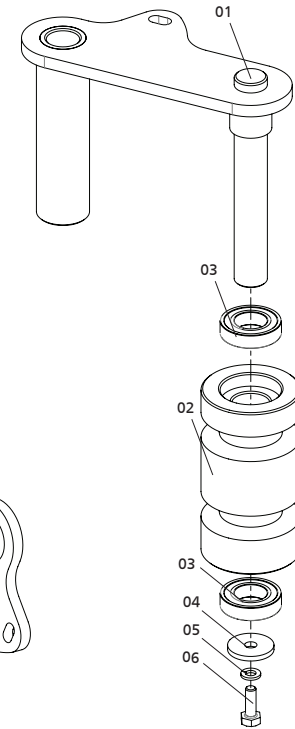
Item	Amount	Product code	Product description
Separator complete lower right tensioner - Item 31 page 58			
01	1	800.019.0038	Separator lower right tensioner.
02	2	006.01.0042	Bearing 6206 ZZ.
03	1	006.01.0050	Self-aligning bearing 2206 E-2R51TN9.
04	2	022.02.0016	Retaining ring I-62.
Starter line complete front left tensioner - Item 66 page. 62.			
05	1	800.065.0172	Starter line front left tensioner - zinc plated.
06	1.	800.024.0020	Nylon pulley Ø60 x 112.5mm with 2 channels.
07	2	006.01.0049	Bearing 6904 ZZ.
08	1	800.065.0169	Washer Ø7.5 x Ø28mm x 1/8" - zinc plated.
09	1	010.01.0011	Heavy duty lock washer 1/4" ZB.
10	1	009.01.0022	Hex screw 1/4" x 3/4" RI G5 UNC ZB.
11	1	007.01.0034	Retainer Ø25mm x Ø47mm x 7m.



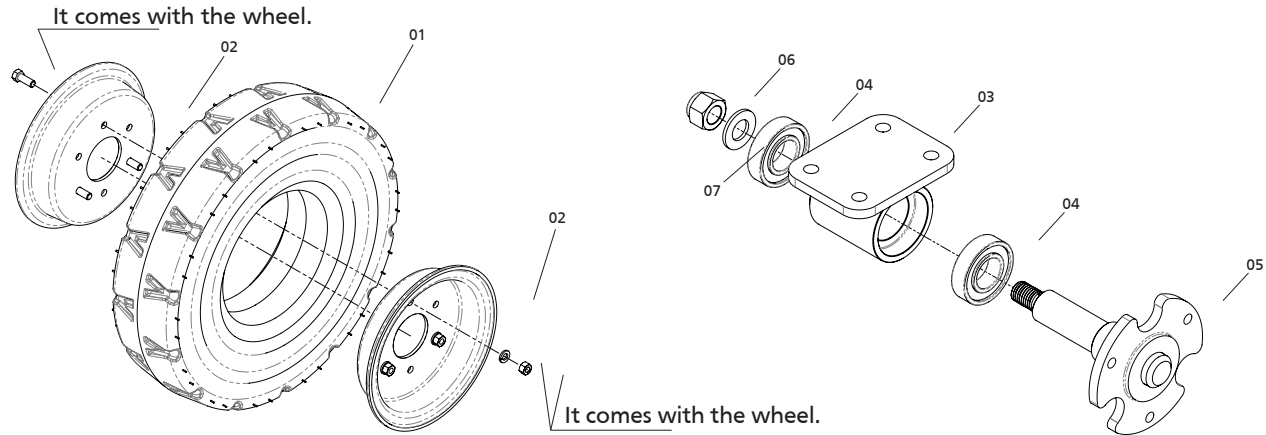
Item	Amount	Product code	Product description
Starter line complete lower right tensioner - Item 82 page. 64			
01	1	800.065.0171	Starter line smaller right tensioner - zinc plated.
02	1	800.024.0020	Nylon pulley Ø60 x 112.5mm with 2 channels.
03	2	006.01.0049	Bearing 6904 ZZ.
04	1	800.065.0169	Washer Ø7.5 x Ø28mm x 1/8" - zinc plated.
05	1	010.01.0011	Heavy duty lock washer 1/4" ZB.
06	1	009.01.0022	Hex screw 1/4" x 3/4" RI G5 UNC ZB.
07	1	007.01.0034	Retainer Ø25mm x Ø47mm x 7mm.
Starter line complete lower right tensioner - Item 81 page. 64.			
08	1	800.065.0170	Starter line smaller left tensioner - zinc plated.
09	1	800.024.0020	Nylon pulley Ø60 x 112.5mm with 2 channels.
10	2	006.01.0049	Bearing 6904 ZZ.
11	1	800.065.0169	Washer Ø7.5 x Ø28mm x 1/8" - zinc plated.
12	1	010.01.0011	Heavy duty lock washer 1/4" ZB.
13	1	009.01.0022	Hex screw 1/4" x 3/4" RI G5 UNC ZB.
14	1	007.01.0034	Retainer Ø25mm x Ø47mm x 7mm.



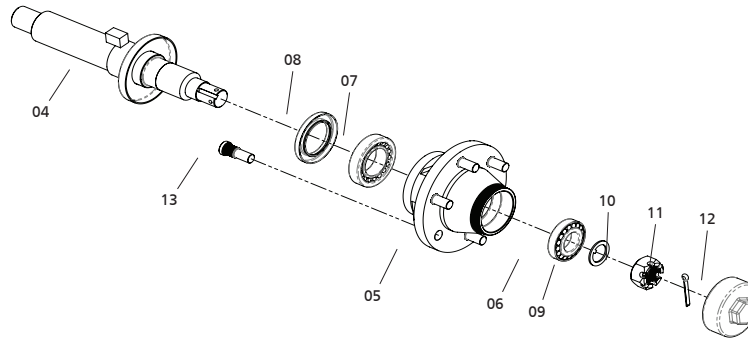
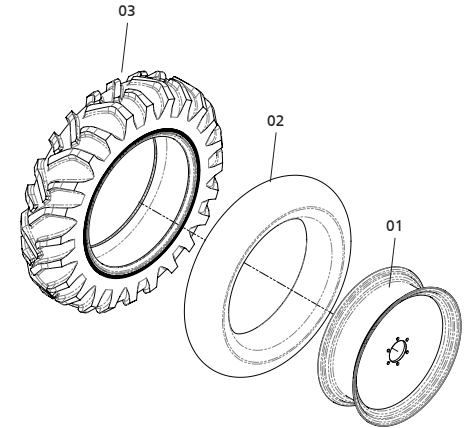
Item	Amount	Product code	Product description
Starter line complete larger right tensioner - Item 85 page. 64			
01	1	800.065.0174	Starter line larger right tensioner - zinc plated.
02	1	800.024.0020	Nylon pulley Ø60 x 112.5mm with 2 channels.
03	2	006.01.0049	Bearing 6904 ZZ.
04	1	800.065.0169	Washer Ø7.5 x Ø28mm x 1/8" - zinc plated.
05	1	010.01.0011	Heavy duty lock washer 1/4" ZB.
06	1	009.01.0022	Hex screw 1/4" x 3/4" RI G5 UNC ZB.
Starter line complete larger left tensioner - Item 90 page. 64			
07	1	800.065.0170	Starter line smaller left tensioner - zinc plated.
08	1	800.024.0020	Nylon pulley Ø60 x 112.5mm with 2 channels.
09	2	006.01.0049	Bearing 6904 ZZ.
10	1	800.065.0169	Washer Ø7.5 x Ø28mm x 1/8" - zinc plated.
11	1	010.01.0011	Heavy duty lock washer 1/4" ZB.
12	1	009.01.0022	Hex screw 1/4" x 3/4" RI G5 UNC ZB.



Item	Amount	Product code	Product description
Split wheel 3"x 8" - mounted (starter line wheel)			
01	1	013.03.0017	Tire rim 500 x 8.
02	1	013.04.0005	Split wheel 3" x 8".
Starter line jack mounting complete bearing			
03	1	800.021.0112	Starter line jack mounting bearing.
04	2	006.01.0042	Bearing 6206 ZZ.
05	1	800.016.0446	Starter line complete wheel shaft.
06	1	008.02.0005	Nylon parlock nut G2 UNC 3/4" CHV 1.1/16" ZB PES 10-FPP
07	1	010.01.0005	Heavy duty flat washer 3/4" ZB.



Item	Amount	Product code	Product description
Left mounted wheel 2.4-28 6 plies - Item 07 page 34			
01	1	800.014.1489	Maná elevator engine mounting plate
02	1	020.02.0015	Motor S reinforced shaft 31.7mm R7/8 (M-LHSYF-250-C4B).
03	4	009.01.0016	Hex screw 1/2" x 2" RI G5 UNF ZB.
Complete hub - disc harrow wheel - Item 04 page 34			
04	1	8,000,160,073	Wheel hub complete shaft.
05	1	8.000.170.003	Wheel hub.
06	1	006.01.0014	Bearing - 30207.
07	1	006.01.0015	Tapered roller bearing 32210.
08	1	007.01.0003	Retainer 60mm x 90mm x 10mm BRG NBR 517.
09	1	010.01.0002	Lock washer Ø45 x Ø32 x 2.5mm - zinc plated.
10	1	008.03.0003	Castellated nut G2 UNF 1.1/4" CHV 1.7/8" ZB PES 12-FPP.
11	1	010.05.0005	Cotter pin 1/4" x 2".
12	1	8.000.100.001	Hubcap.
13	6	009.10.0001	Knurled cylinder head wheel screw 5/8" x 2" G5 UNF ZB.





04

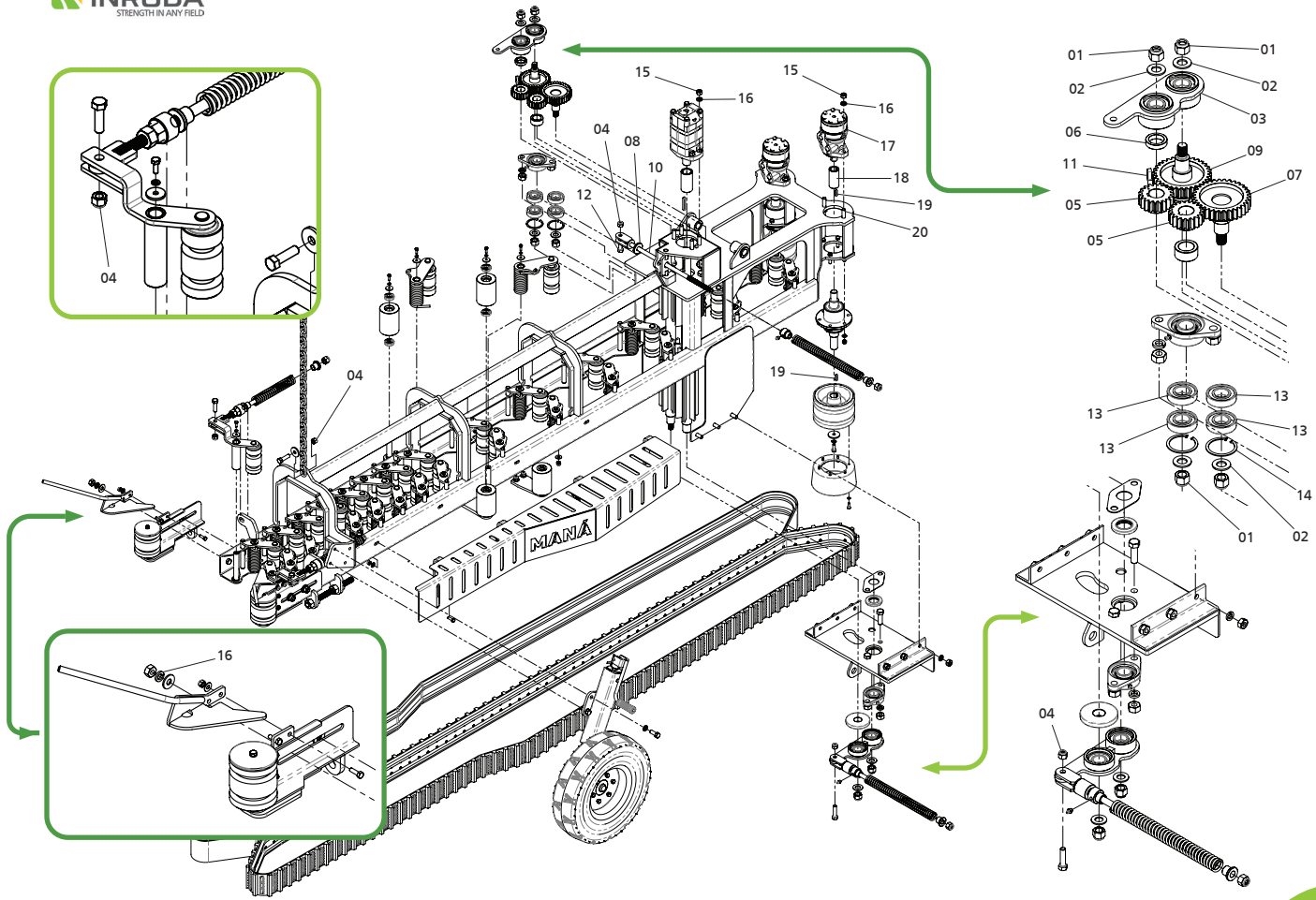
SIDE LINE LEFT

Full harvesting line with conveyors, stretchers, control wheel, separator.



LEFT SIDE LINE

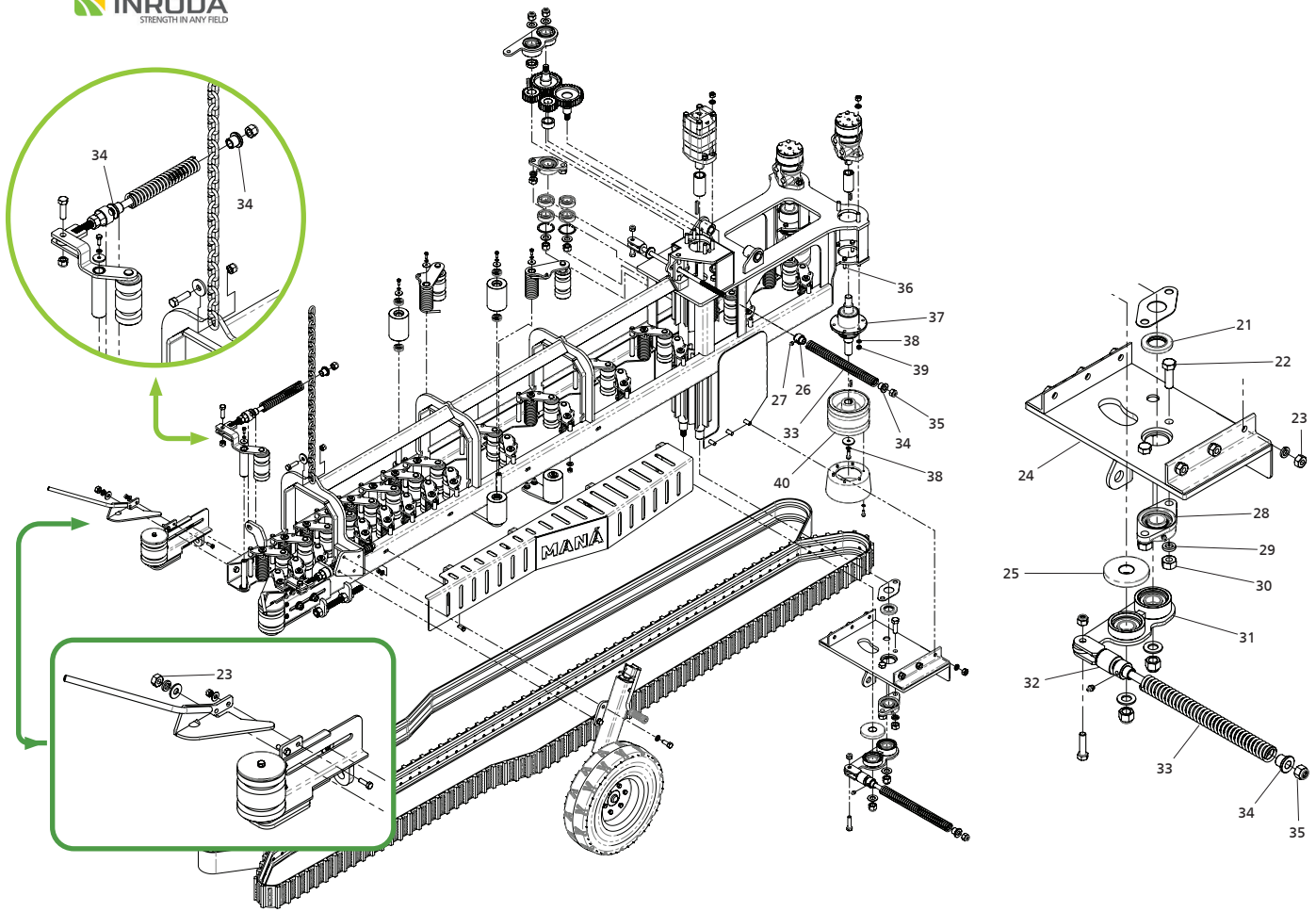
Item	Amount	Product code	Product description
01	6	008.02.0005	Nylon parlock nut G2 UNC 3/4" CHV 1.1/16" ZB PES 10-FPP.
02	6	010.01.0005	Heavy duty flat washer 3/4" ZB.
03	1	800.019.0041	Separator complete upper left tensioner.
04	5	008.02.0008	Nylon parlock nut G2 UNC 1/2" CHV 3/4" ZB PES 20-FPP.
05	2	022.22.0004	Gear 19Z - Maná.
06	1	800.006.0373	Bushing Ø32 x Ø44.5mm x 11mm.
07	1	800.016.0444	Shaft 106mm with gear 33Z.
08	1	800.003.0136	Nylon washer Ø17 x Ø45 x 6mm.
09	1	800.016.0437	Shaft with gear 33Z.
10	2	800.065.0192	Separator smaller tensioner - zinc plated.
11	1	010.02.0016	Square key type-a 5/16" x 28mm treated 43-52 HRC.
12	2	009.01.0134	Hex screw 1/2" x 2" RP G8 UNC ZB.
13	4	006.01.0042	Bearing 6206 ZZ.
14	2	022.02.0016	Retaining ring I-62.
15	8	008.01.0016	Hex nut G5 UNF 1/2" CHV 3/4" ZB 20-FPP.
16	22	010.01.0012	Heavy duty lock washer 1/2" ZB.
17	2	020.02.0016	Motor R shaft Cyl 25.4mm R7/8 UNF (M-LHR-200-C4).
18	2	800.006.0349	Bushing Ø25.5 x Ø38 x 80mm with keyway.
19	4	010.02.0015	Square key type-a 1/4" x 28mm treated 43-52 HRC.
20	8	009.01.0016	Hex screw 1/2" x 2" RI G5 UNF ZB.





LEFT SIDE LINE

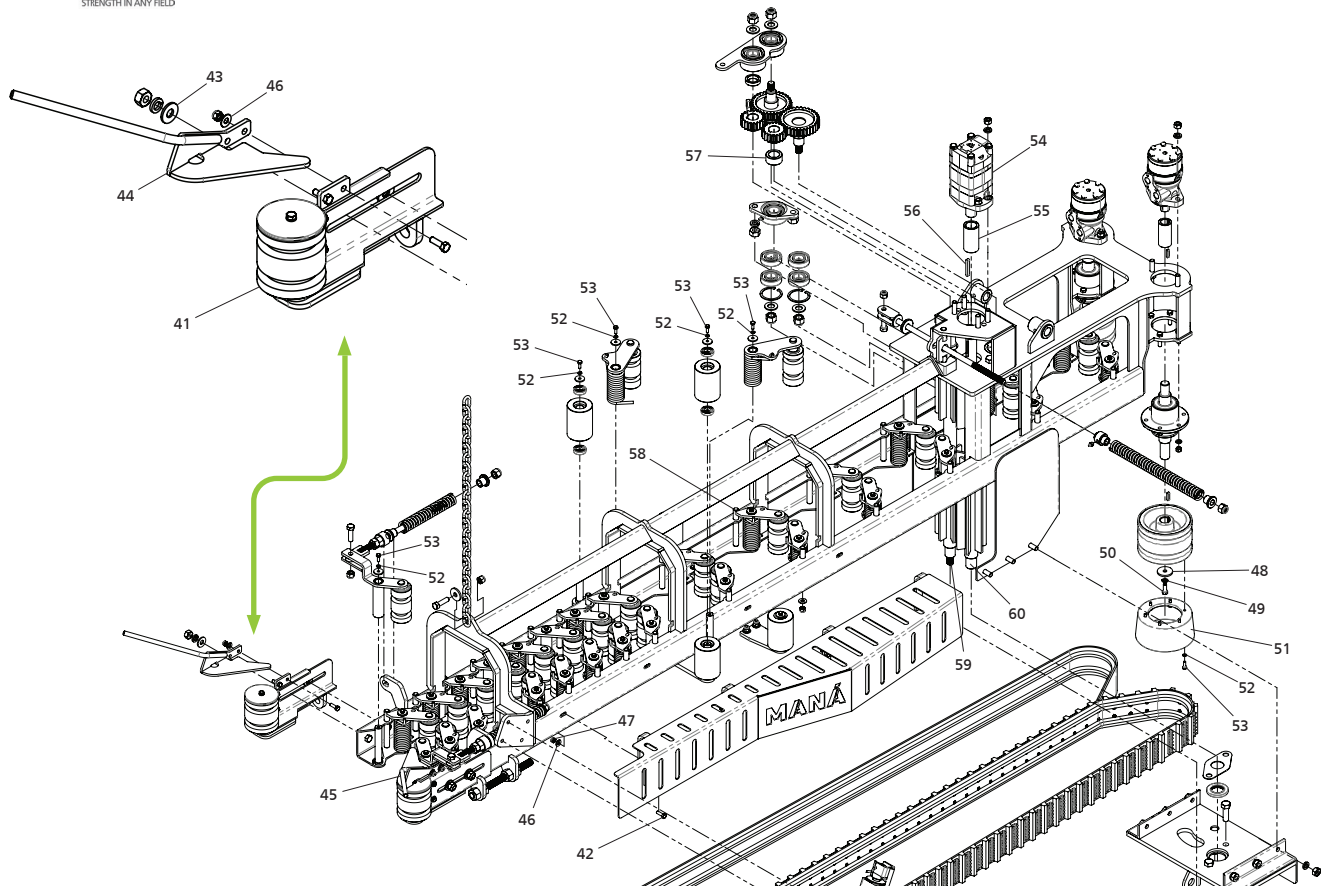
Item	Amount	Product code	Product description
21	1	007.01.0030	Retainer 38mm x 63.5mm x 8mm BRG.
22	4	009.01.0046	Hex screw 5/8" x 2" RI G5 UNC ZB.
23	10	008.01.0020	Hex nut G2 UNC 1/2" CHV 7/8" heavy duty 13-FPP.
24	1	800.041.0388	Separator lower left bracket.
25	1	800.010.0007	Separator tensioner protection cap.
26	2	800.06 5.0198	Bushing Ø16.5 x Ø36 x 42.5mm - zinc plated.
27	2	010.04.0002	Grease fitting 1/8" BSP - straight.
28	2	800.021.0111	Bearing FL 206 with roller UC 206-20.
29	4	010.01.0014	Heavy duty lock washer 5/8" ZB.
30	4	008.01.0008	Hex nut G2 UNC 5/8" CHV- 1 1/16" heavy duty ZB 11-FPP.
31	1	800.019.0043	Separator complete lower left tensioner.
32	1	800.006.0375	Nylon bushing Ø17 x Ø40 x 38.5mm.
33	2	005.01.0034	Helical compression spring Ø24.5 x Ø35.5 x 261mm BØ5.5 P10.
34	6	800.065.0181	Bushing Ø16.5 x Ø24 x 25mm - zinc plated.
35	4	008.02.0004	Nylon parlock nut G2 UNC 5/8" CHV 15/16" ZB PES 11-FPP.
36	12	009.01.0035	Hex screw 3/8" x 1.1/2" RI G2 UNC ZB.
37	2	800.017.0040	Maná complete transmission hub.
38	14	010.01.0010	Heavy duty lock washer 3/8" ZB.
39	12	008.01.0013	Hex nut G2 UNC 3/8" CHV 11/16" heavy duty ZB 16-FPP.
40	2	800.081.0004	Pulley Ø150 x 105mm with 2 channels - processed.





LEFT SIDE LINE

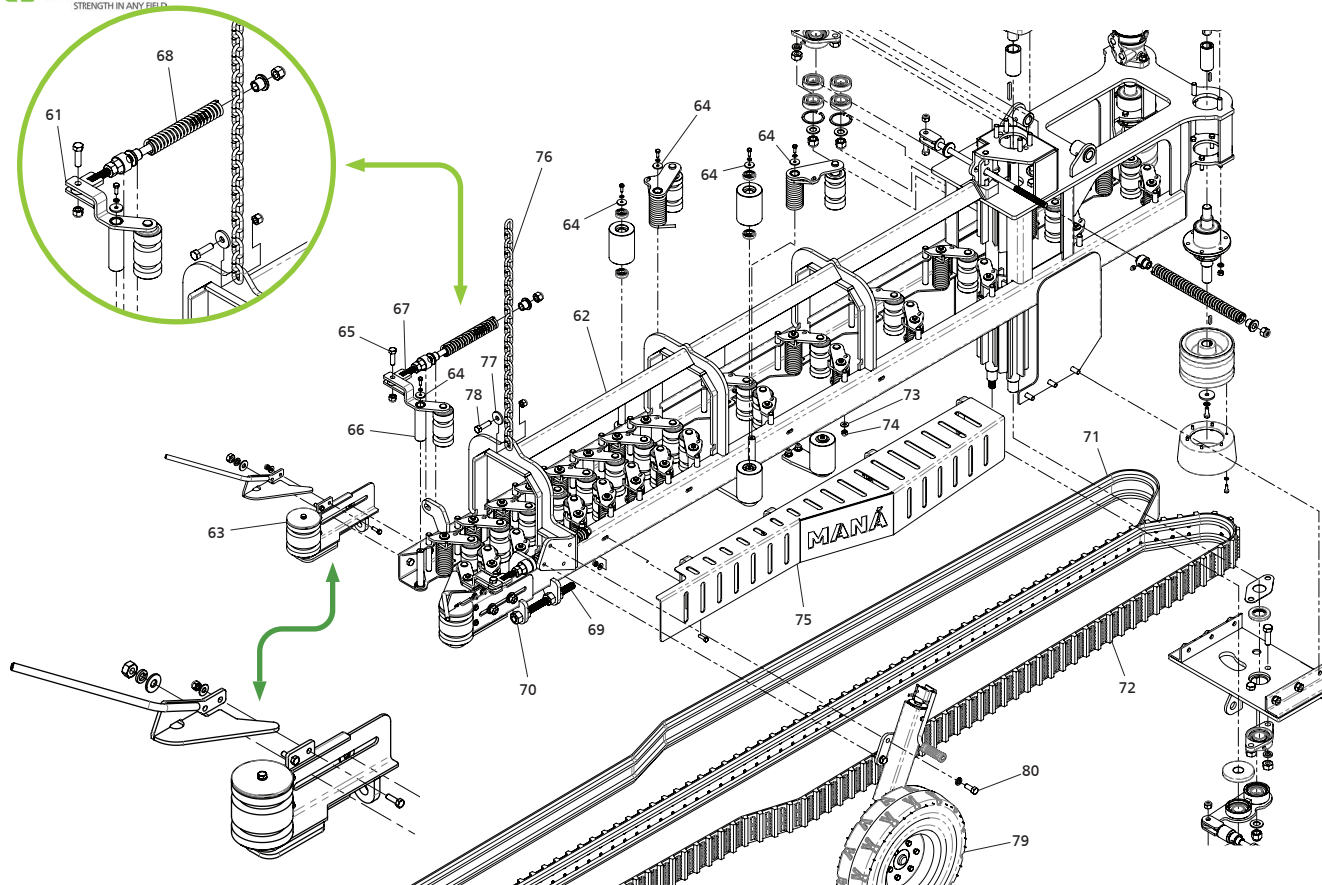
Item	Amount	Product code	Product description
41	1	800.019.0033	Front complete right tensioner.
42	8	009.01.0041	Hex screw 5/16" x 1" RI G2 UNC ZB.
43	4	010.01.0009	Heavy duty flat washer 1/2" ZB.
44	1	800.065.0189	Starter line left guide - zinc plated.
45	1	800.065.0190	Starter line right guide - zinc plated.
46	8	010.01.0008	Heavy duty flat washer 5/16" ZB.
47	8	008.02.0002	Nylon parlock nut G2 UNC 5/16" CHV 1/2" ZB PES 18-FPP.
48	2	800.065.0180	Washer Ø11 x Ø45mm x 3/16" - zinc plated.
49	14	010.01.0010	Heavy duty lock washer 3/8" ZB.
50	2	009.01.0034	Hex screw 3/8" x 1" RI G5 UNC ZB.
51	2	800.024.0025	Maná line tapered pulley.
52	46	010.01.0011	Heavy duty lock washer 1/4" ZB.
53	46	009.01.0022	Hex screw 1/4" x 3/4" RI G5 UNC ZB.
54	1	020.02.0015	Motor S reinforced shaft 31.7mm R7/8 (M-LHSYF-250-C4B).
55	1	800.006.0362	Bushing Ø31.9 x 85mm with keyway.
56	1	010.02.0017	Type-a square key 5/16" x 60mm treated 43-52 HRC.
57	1	800.006.0374	Bushing Ø32 x Ø48 x 23mm.
58	28	800.065.0179	Pin Ø5/8" x 152mm - zinc plated.
59	1	800.016.0433	Separator shaft 900mm.
60	1	800.016.0435	Separator shaft 830mm.





LEFT SIDE LINE

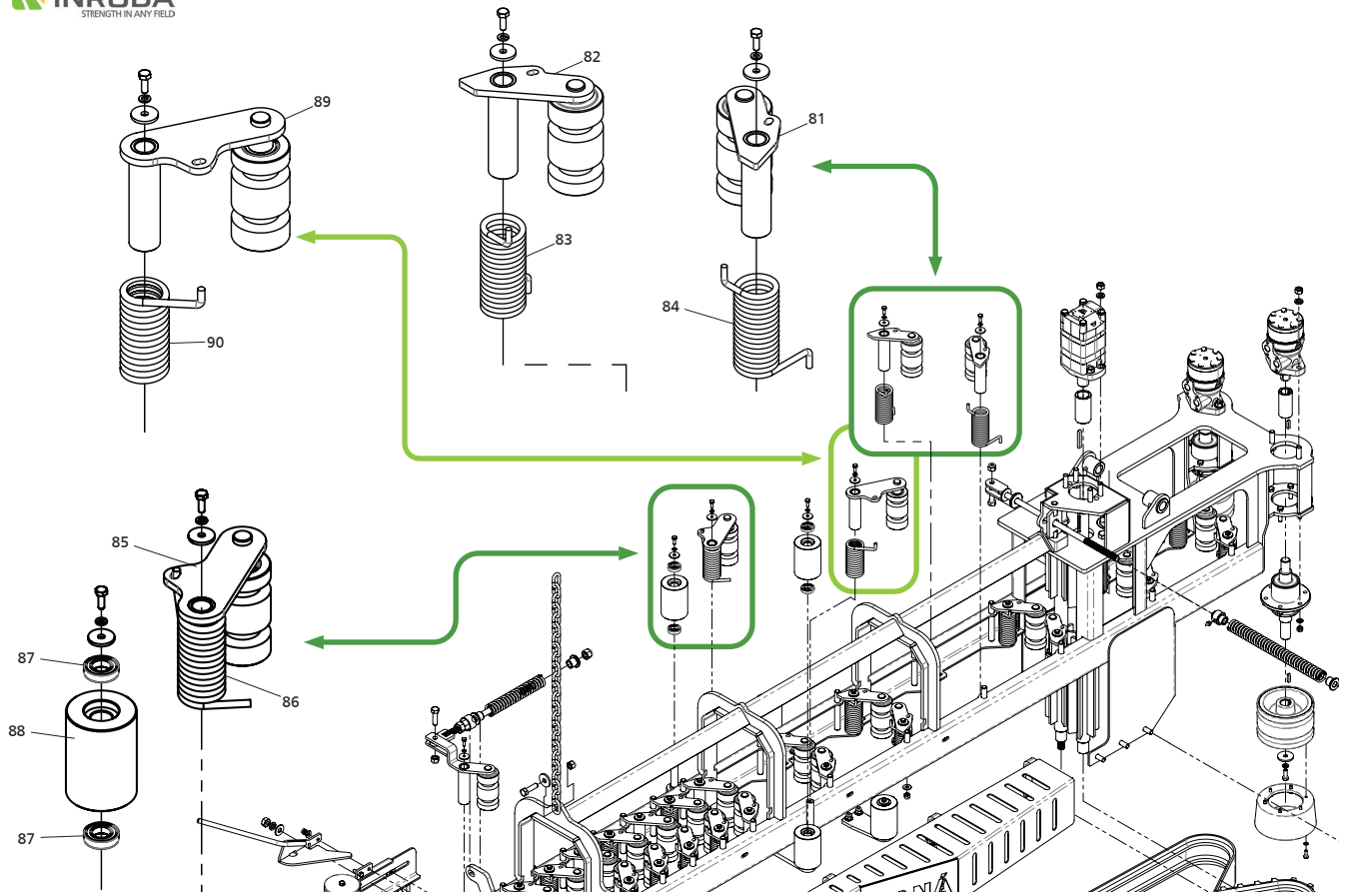
Item	Amount	Product code	Product description
61	1	800.019.0027	Starter line complete front right tensioner.
62	1	800.015.0141	Cassava harvester right line chassis.
63	1	800.019.0033	Front complete right tensioner.
64	34	800.065.0169	Washer Ø7.5 x Ø28mm x 1/8" - zinc plated.
65	3	009.01.0015	Hex screw 1/2" x 1.3/4" RI G2 UNC ZB.
66	1	800.019.0027	Starter line complete front right tensioner.
67	2	800.065.0191	Front thread tensioner - zinc plated.
68	2	005.01.0027	Helical compression spring Ø24.5 x Ø35.5 x 211mm BØ5.5 P10.
69	2	800.500.0074	Threaded rod Ø3/4" x 247mm.
70	8	008.01.0006	Hex nut G2 UNC 3/4" CHV- 1 1/4" heavy duty ZB 10-FPP.
71	1	022.91.0001	PVC belt VG 530 6700 x 100mm with toothed guide.
72	1	800.562.0003	Maná line claw strap.
73	28	010.01.0003	Heavy duty flat washer 3/8" ZB.
74	28	008.02.0007	Nylon parlock nut G2 UNC 3/8" CHV- 9/16" ZB 16-FPP.
75	1	800.026.0081	Starter line left guard.
76	1	022.06.0019	Chain 5/16" with 24 links.
77	1	800.065.0184	Washer Ø13.5 x Ø40mm x 3/16" - zinc plated.
78	3	009.01.0015	Hex screw 1/2" x 1.3/4" RI G2 UNC ZB.
79	1	800.027.0049	Starter line complete wheel with jack.
80	10	009.01.0014	Hex screw 1/2" x 1.1/4" RI G2 UNC ZB.



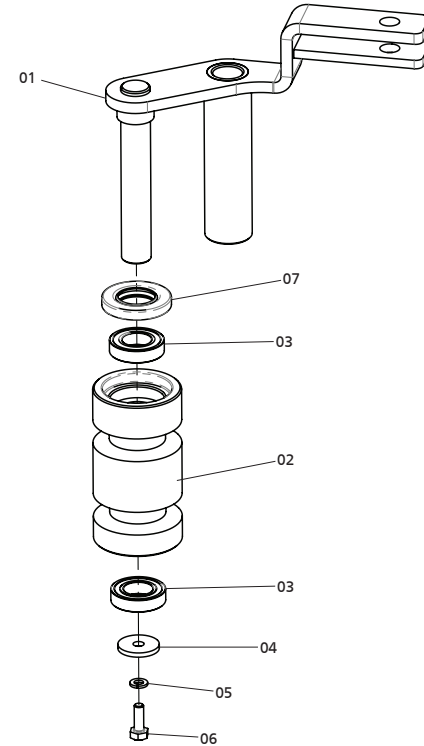
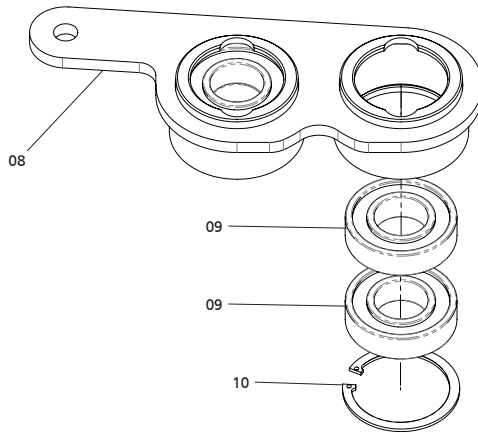


LEFT SIDE LINE

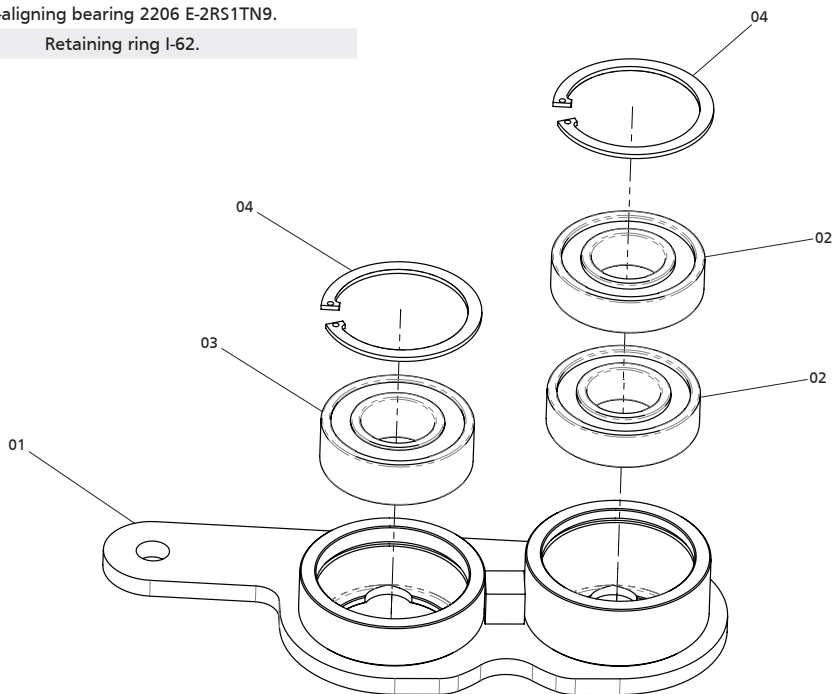
Item	Amount	Product code	Product description
81	14	800.019.0021	Starter line complete lower left tensioner.
82	14	800.019.0023	Starter line complete lower right tensioner.
83	14	005.01.0032	Right torsion helical spring Ø36.5 x Ø49.5 x 113mm BØ6.5 P6.5.
84	14	005.01.0033	Left torsion coil spring Ø36.5 x Ø49.5 x 113mm BØ6.5 P6.5.
85	1	800.019.0029	Starter line complete larger right tensioner.
86	1	005.01.0031	Left torsion coil spring Ø36 x Ø51 x 108mm BØ7.5 P7.5.
87	4	006.01.0049	Bearing 6904 ZZ.
88	1	800.024.0021	Pulley Ø75 x 105mm.
89	1	800.019.0031	Starter line complete larger left tensioner.
90	1	005.01.0030	Right torsion helical spring Ø36 x Ø51 x 108mm BØ7.5 P7.5.



Item	Amount	Product code	Product Description
Starter line complete front right tensioner (Item 66 Page 80)			
01	1	800.065.0173	Starter line complete front right tensioner - zinc plated.
02	1	800.024.0020	Nylon pulley Ø60 x 112.5mm with 2 channels.
03	2	006.01.0049	Bearing 6904 ZZ.
04	1	800.065.0169	Washer Ø7.5 x Ø28mm x 1/8" - zinc plated.
05	1	010.01.0011	Heavy duty lock washer 1/4" ZB.
06	1	009.01.0022	Hex screw 1/4" x 3/4" RI G5 UNC ZB.
07	1	007.01.0034	Retainer Ø25mm x Ø47mm x 7mm.
Separator complete upper left tensioner - Item 03 page 74			
08	1	800.019.0040	Separator upper left tensioner.
09	4	006.01.0042	Bearing 6206 ZZ.
10	2	022.02.0016	Retaining ring I-62.



Item	Amount	Product code	Product description
Separator complete lower left tensioner - Item 31 page 76			
01	1	800.019.0042	Separator lower left tensioner.
02	2	006.01.0042	Bearing 6206 ZZ.
03	1	006.01.0050	Self-aligning bearing 2206 E-2RS1TN9.
04	2	022.02.0016	Retaining ring I-62.



05

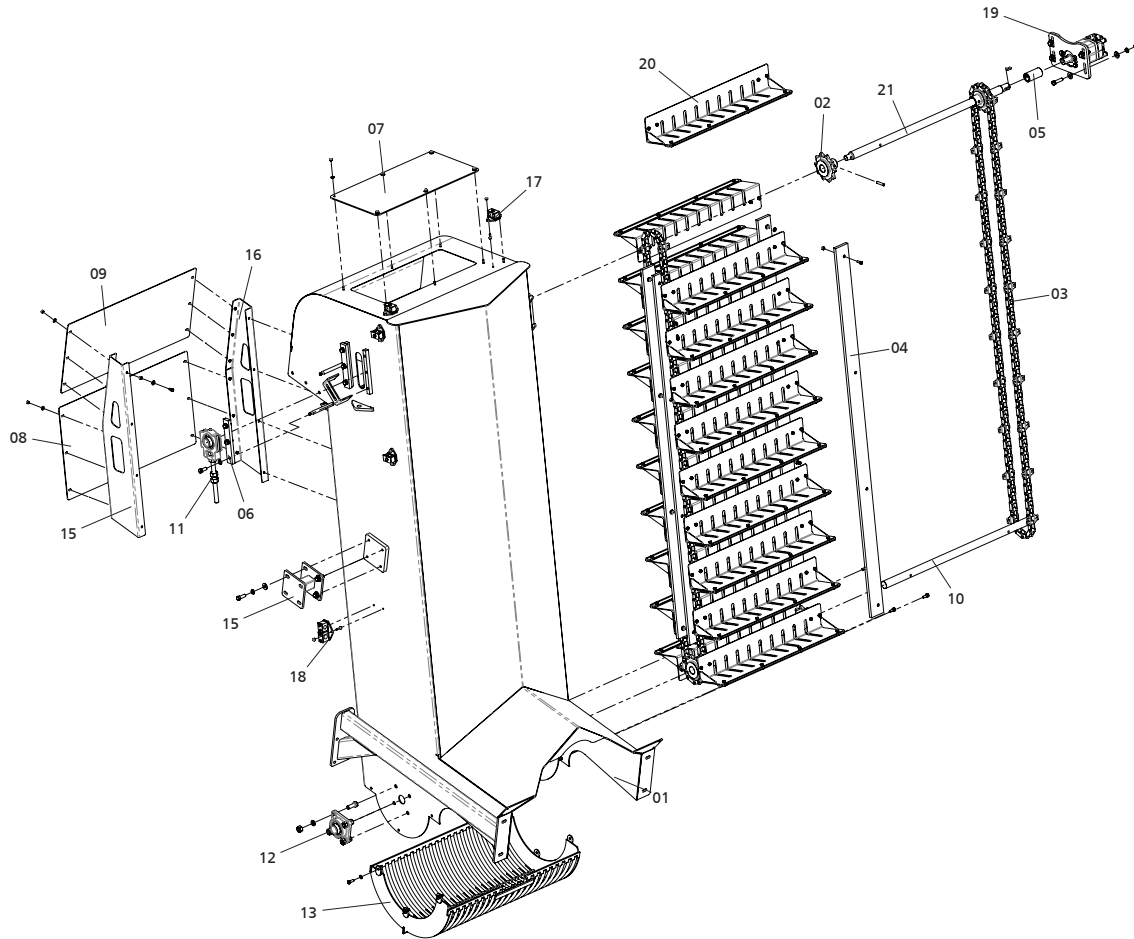
ELEVATOR COMPLETE

Elevator complete with lifting blades, chains, chassis, protection and tensioners.



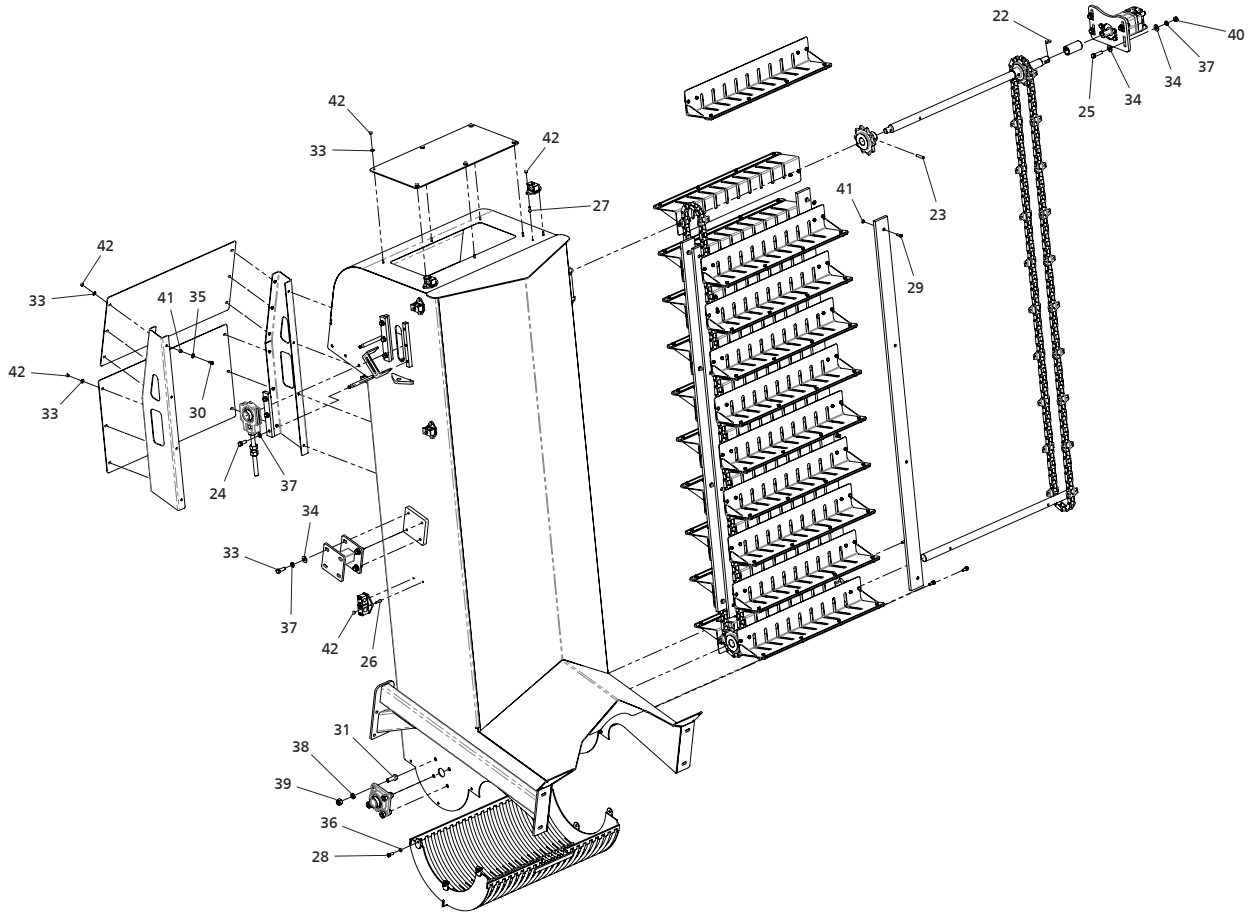
MANÁ COMPLETE ELEVATOR

Item	Amount	Product code	Product description
01	1	800.102.0001	Cassava harvester elevator.
02	4	022.22.0005	Maná elevator gear 10Z.
03	2	022.06.0017	Chain CA 550 K1 6X6 with 120 links + splicing.
04	4	022.97.0001	Jatoba wood board 1.5 x 8 x 200cm.
05	1	800.006.0362	Bushing Ø31.9 x 85mm with keyway.
06	4	800.004.0105	Conveyor belt adjustment bar.
07	1	800.014.1490	Plate 320 x 640mm x 3/16".
08	1	800.014.1491	Plate 501 x 847mm x 1/8".
09	1	800.014.1492	Plate 416 x 847mm x 1/8".
10	1	800.016.0429	Shaft Ø1.1/2" x 966mm with holes.
11	2	800.019.0015	IDAC complete belt tensioner.
12	2	800.021.0027	Complete bearing - F208 / UC208.
13	1	800.026.0079	Maná elevator guard.
14	2	800.041.0373	Maná elevator mounting bracket.
15	1	800.041.0374	Elevator upper right mounting bracket.
16	1	800.041.0375	Elevator upper left mounting bracket.
17	4	800.041.0376	Complete bracket with 1 KVD-15 elevator.
18	3	800.041.0377	Complete bracket with 1 KV-18 and 1 KV-22.
19	1	800.087.0005	Motor with mounting plate.
20	20	800.088.0005	Maná complete elevator blade.
21	1	800.016.0430	Shaft Ø1.1/2" x 1072mm with hole and keyway.

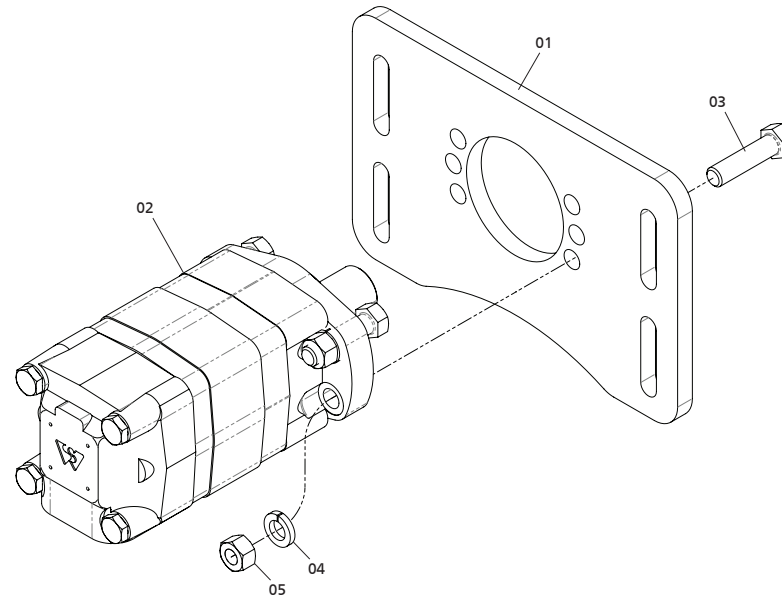


MANÁ COMPLETE ELEVATOR

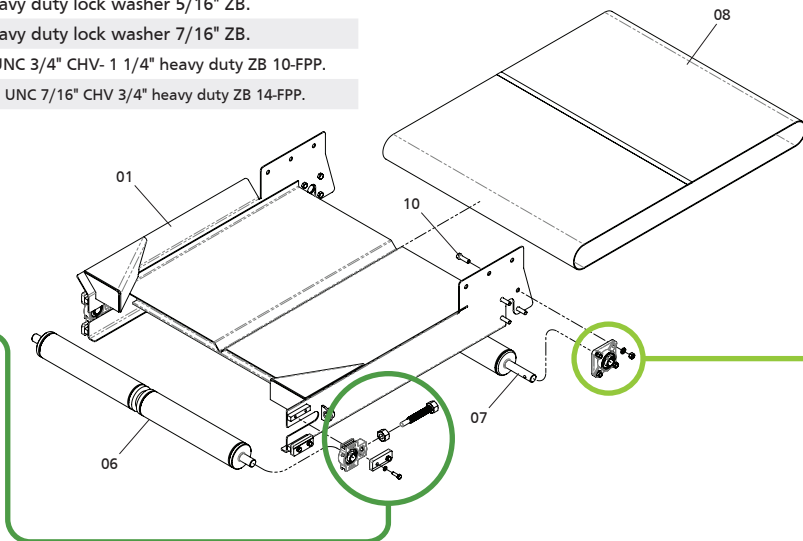
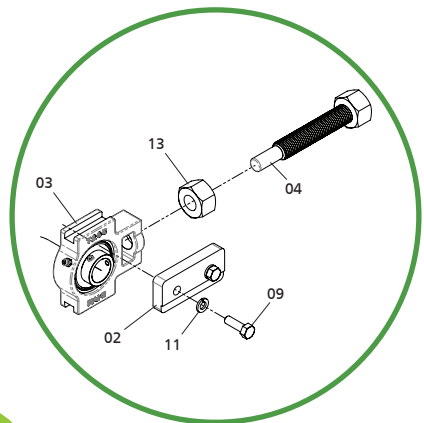
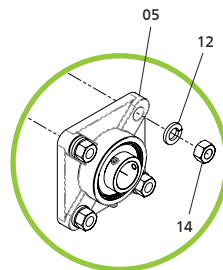
Item	Amount	Product code	Product description
22	1	010.02.0016	Square key type-a 5/16" x 28mm treated 43-52 HRC.
23	4	010.06.0002	Elastic pin 10mm x 50mm.
24	12	009.01.0014	Hex screw 1/2" x 1.1/4" RI G2 UNC ZB.
25	4	009.01.0016	Hex screw 1/2" x 2" RI G5 UNF ZB.
26	8	009.01.0021	Hex screw 1/4" x 1" RI G2 UNC ZB.
27	6	009.01.0022	Hex screw 1/4" x 3/4" RI G5 UNC ZB.
28	6	009.01.0034	Hex screw 3/8" x 1" RI G5 UNC - ZB.
29	16	009.01.0041	Hex screw 5/16" x 1" RI G2 UNC ZB.
30	8	009.01.0042	Hex screw 5/16" x 3/4" RI G2 UNC ZB.
31	8	009.01.0045	Hex screw 5/8" X 1 3/4" RI G2 UNC ZB.
32	8	009.01.0109	Hex screw 1/2" x 1.1/2" RI G5 UNC ZB.
33	22	010.01.0004	Heavy duty flat washer 1/4" ZB.
34	16	010.01.0009	Heavy duty flat washer 1/2" ZB.
35	24	010.01.0008	Heavy duty flat washer 5/16" ZB.
36	6	010.01.0010	Heavy duty lock washer 3/8" ZB.
37	24	010.01.0012	Heavy duty lock washer 1/2" ZB.
38	8	010.01.0014	Heavy duty lock washer 5/8" ZB.
39	8	008.01.0008	Hex nut G2 UNC 5/8" CHV- 1 1/16" heavy duty ZB 11-FPP.
40	4	008.01.0016	Hex nut G5 UNF 1/2" CHV 3/4" ZB 20-FPP.
41	24	008.02.0002	Nylon parlock nut G2 UNC 5/16" CHV 1/2" ZB PES 18-FPP.
42	32	008.02.0011	Nylon parlock nut G2 UNC 1/4" CHV 7/16" ZB PES 20-FPP.



Item	Amount	Product code	Product description
Motor with mounting plate (maná elevator engine) - Item 19 page. 88			
01	1	800.014.1489	Maná elevator engine mounting plate.
02	1	020.02.0015	Motor S reinforced shaft 31.7mm R7/8 (M-LHSYF-250-C4B).
03	4	009.01.0016	Hex screw 1/2" x 2" RI G5 UNF ZB.
04	4	010.01.0012	Heavy duty lock washer 1/2" ZB.
05	4	008.01.0016	Hex nut G5 UNF 1/2" CHV 3/4" ZB 20-FPP.



Item	Amount	Product code	Product description
Maná elevator complete conveyor belt - Item 17 page. 34			
01	1	8.000.150.143	Maná elevator conveyor belt chassis.
02	4	8.000.140.781	Plate 38 x 85mm x 1/2".
03	2	8.000.210.079	Bearing T 205 with roller UC 205-16.
04	2	800.065.0215	Conveyor belt tensioner (zinc plated).
05	2	8.000.210.115	Complete bearing F205/UC205-16.
06	1	8.005.530.140	Maná elevator conveyor belt rear roller.
07	1	8.005.530.141	Maná elevator conveyor belt front roller.
08	1	022.91.0003	PVC belt 350 BK GL 2108 x 830mm with guide and clamp.
09	8	009.01.0041	Hex screw 5/16" x 1" RI G2 UNC ZB.
10	8	009.01.0056	Hex screw 7/16" x 1.1/2" RI G2 UNC ZB.
11	8	010.01.0015	Heavy duty lock washer 5/16" ZB.
12	8	010.01.0016	Heavy duty lock washer 7/16" ZB.
13	2	008.01.0006	Hex nut G2 UNC 3/4" CHV- 1 1/4" heavy duty ZB 10-FPP.
14	8	008.01.0018	Hex nut G2 UNC 7/16" CHV 3/4" heavy duty ZB 14-FPP.



06

COMPLETE CASSAVA HARVESTER PLATFORM

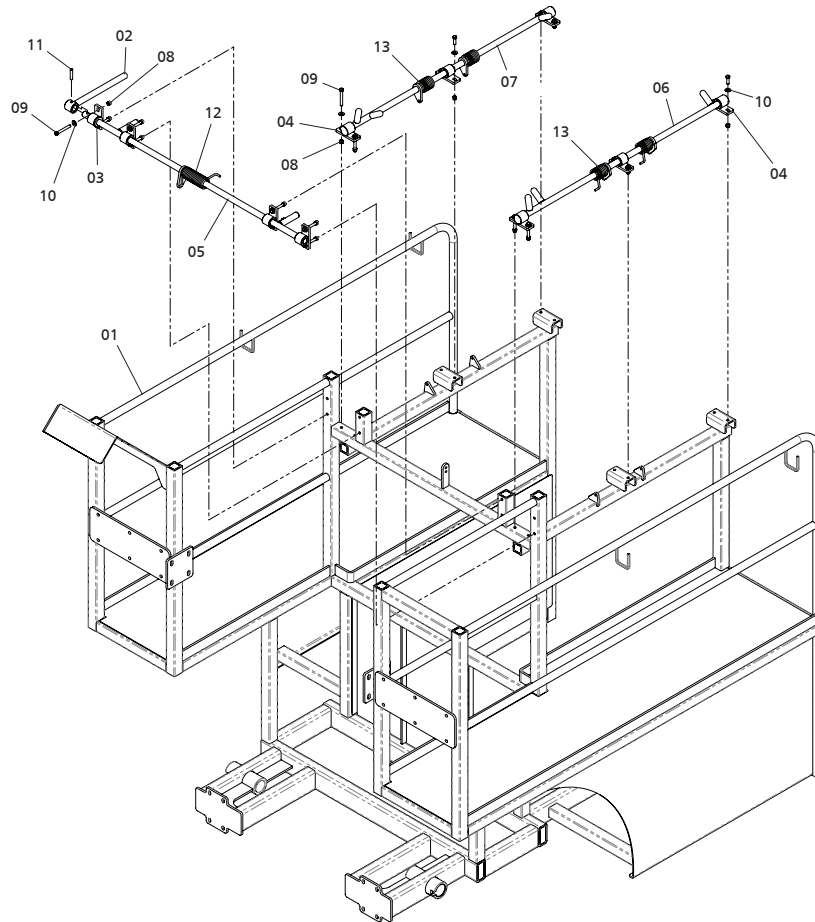
Complete platform with
bracket for bags and
bracket for the hydraulic
block.





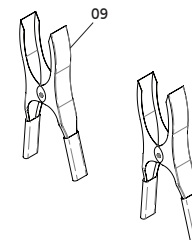
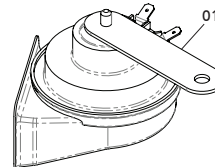
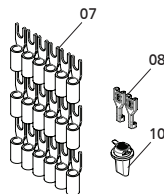
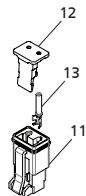
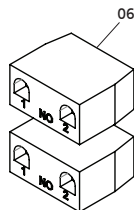
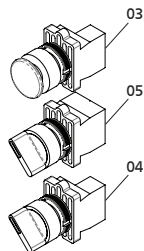
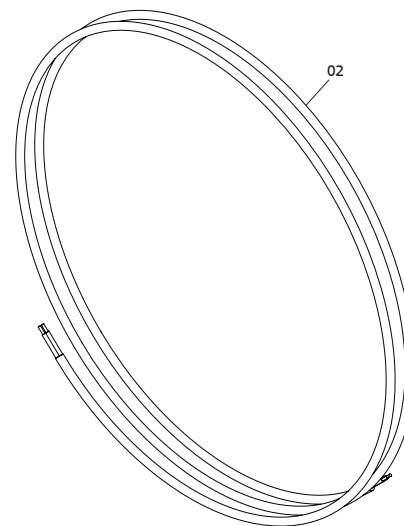
COMPLETE PLATFORM

Item	Amount	Product code	Product description
01	1	800.074.0044	Cassava harvester platform.
02	1	800.060.0002	Bag tripping lever.
03	2	800.021.0110	Big bag bracket smaller bearing.
04	4	800.021.0114	Big bag bracket rear smaller bearing.
05	1	800.041.0384	Big bag center bracket.
06	1	800.041.0385	Big bag right side mounting bracket.
07	1	800.041.0386	Big bag left side mounting bracket.
08	20	008.02.0007	Nylon parlock nut G2 UNC 3/8" CHV- 9/16" ZB 16-FPP.
09	20	009.01.0151	Hex screw 3/8" x 3" RP G8 UNC ZB.
10	20	010.01.0003	Heavy duty flat washer 3/8" ZB.
11	1	010.06.0002	Elastic pin 10mm x 50mm.
12	1	005.01.0029	Helical torsion spring Ø36.5 x Ø49.5 x 126mm BØ6.5 P6.5.
13	4	005.01.0028	Helical torsion spring Ø36.5 x Ø49.5 x 61mm BØ6.5 P6.5.

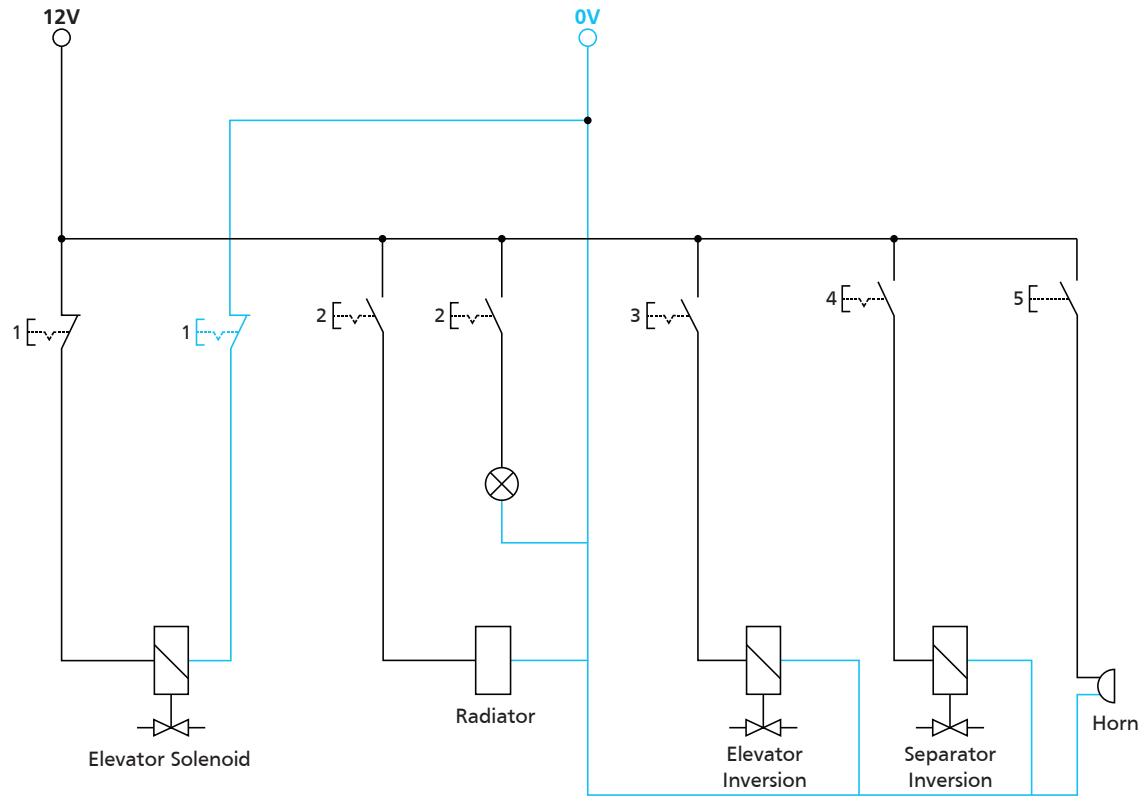


ELECTRICAL KIT

Item	Amount	Product code	Product description
Electric cassava harvester kit			
01	1	022.05.0001	Horn 24V.
02	23	022.50.0005	Cable PP 2x1.5mm black.
03	1	022.86.0003	Yellow non-retaining mushroom button C2PNM3.
04	1	022.86.0004	2-position switch LK2-ED21.
05	1	022.86.0005	2-position switch green LED LK6-C2SIS (220V).
06	2	022.86.0006	Contact block 1NC.
07	18	022.86.0008	Insulated fork terminal 1.5/2.5mm blue.
08	2	022.86.0009	Female terminal 1.5/2.5mm.
09	1	022.86.0010	Alligator clip set 30A 1-red/1-black.
10	1	022.86.0011	LED bulb socket E7 24V.
11	1	022.86.0012	2-way female plug.
12	1	022.86.0016	2-way female lock.
13	2	022.86.0017	GDE female pin.

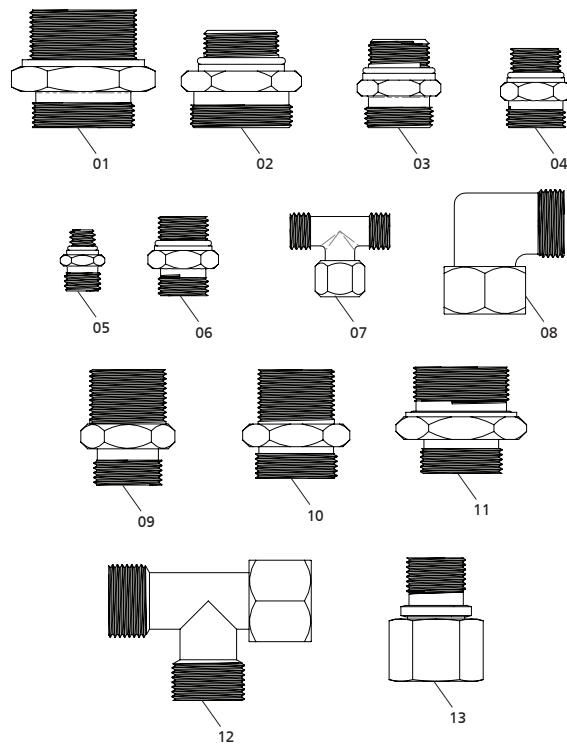


ELECTRIC CIRCUIT



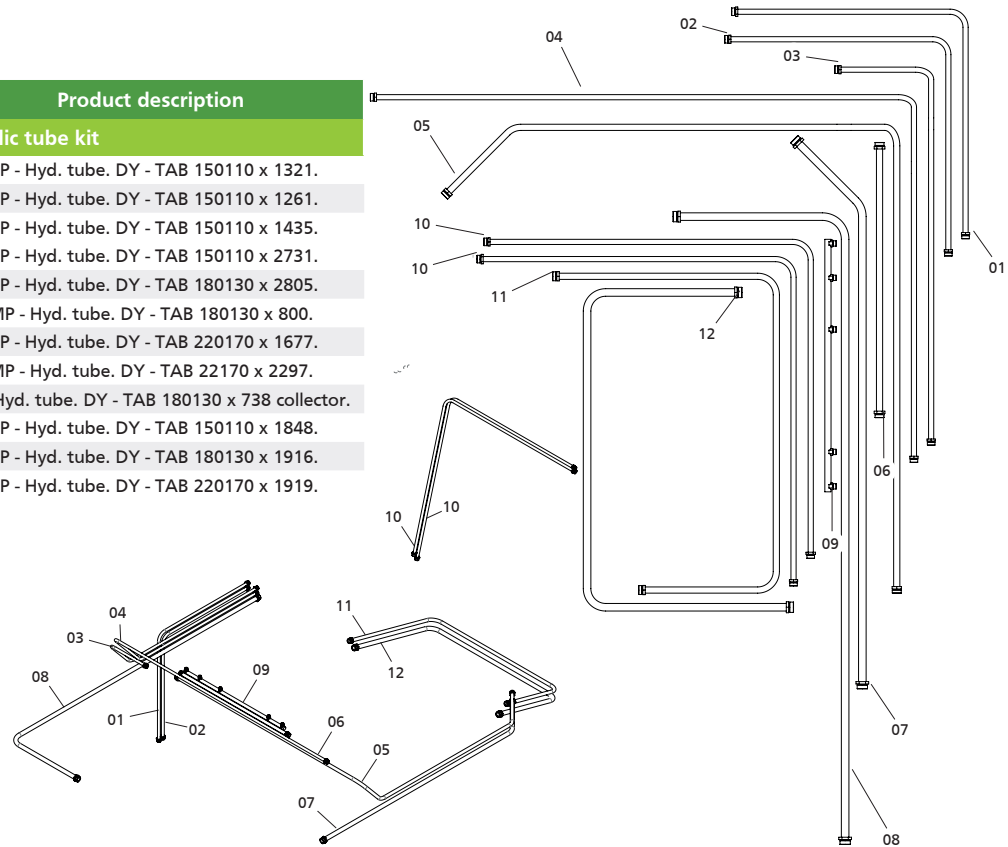
GASKET KIT

Item	Amount	Product code	Product description
Maná harvester gasket kit			
01	1	019.20.0001	Gasket XAEUM 35 X 1.1/2" BSP.
02	1	019.20.0002	Gasket XAEUM 35 X 1.5/16" UNF.
03	3	019.20.0003	Gasket XAEUM 22 x 1 1/16 UNF.
04	5	019.20.0004	Gasket XAEUM 18 x 7/8" UNF.
05	6	019.20.0005	Gasket XAEUM 10 X 7/16" UNF.
06	18	019.20.0006	Gasket XAEUM 15 x 7/8" UNF.
07	2	019.20.0008	Gasket XAETVB 10L.
08	1	019.20.0009	Gasket XAEJB 22.
09	1	019.20.0010	Gasket XAEJB 22 X 1 NPT.
10	1	019.20.0011	Gasket XAEJB 28 X 1 NPT.
11	1	019.20.0012	Gasket XAEUMO 28 x 1 1/4" BSP.
12	1	019.20.0014	Gasket XAETVB 22.
13	1	019.20.0015	AEATB 22 x 18.



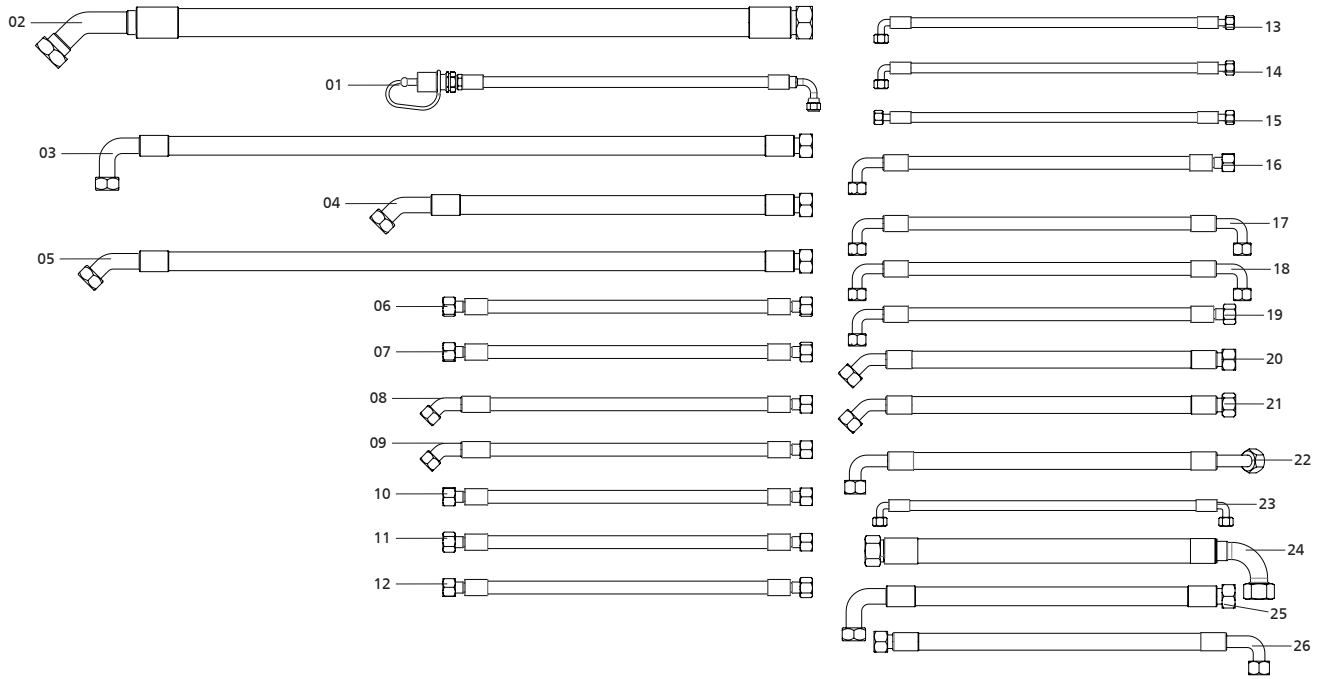
TUBES

Item	Amount	Product code	Product description
Maná hydraulic tube kit			
01	1	022.11.0013	MP - Hyd. tube. DY - TAB 150110 x 1321.
02	1	022.11.0014	MP - Hyd. tube. DY - TAB 150110 x 1261.
03	1	022.11.0015	MP - Hyd. tube. DY - TAB 150110 x 1435.
04	1	022.11.0017	MP - Hyd. tube. DY - TAB 150110 x 2731.
05	1	022.11.0021	MP - Hyd. tube. DY - TAB 180130 x 2805.
06	1	022.11.0022	MP - Hyd. tube. DY - TAB 180130 x 800.
07	1	022.11.0023	MP - Hyd. tube. DY - TAB 220170 x 1677.
08	1	022.11.0025	MP - Hyd. tube. DY - TAB 22170 x 2297.
09	1	022.11.0026	MP - Hyd. tube. DY - TAB 180130 x 738 collector.
10	2	022.11.0027	MP - Hyd. tube. DY - TAB 150110 x 1848.
11	1	022.11.0028	MP - Hyd. tube. DY - TAB 180130 x 1916.
12	1	022.11.0029	MP - Hyd. tube. DY - TAB 220170 x 1919.




HOSE KIT

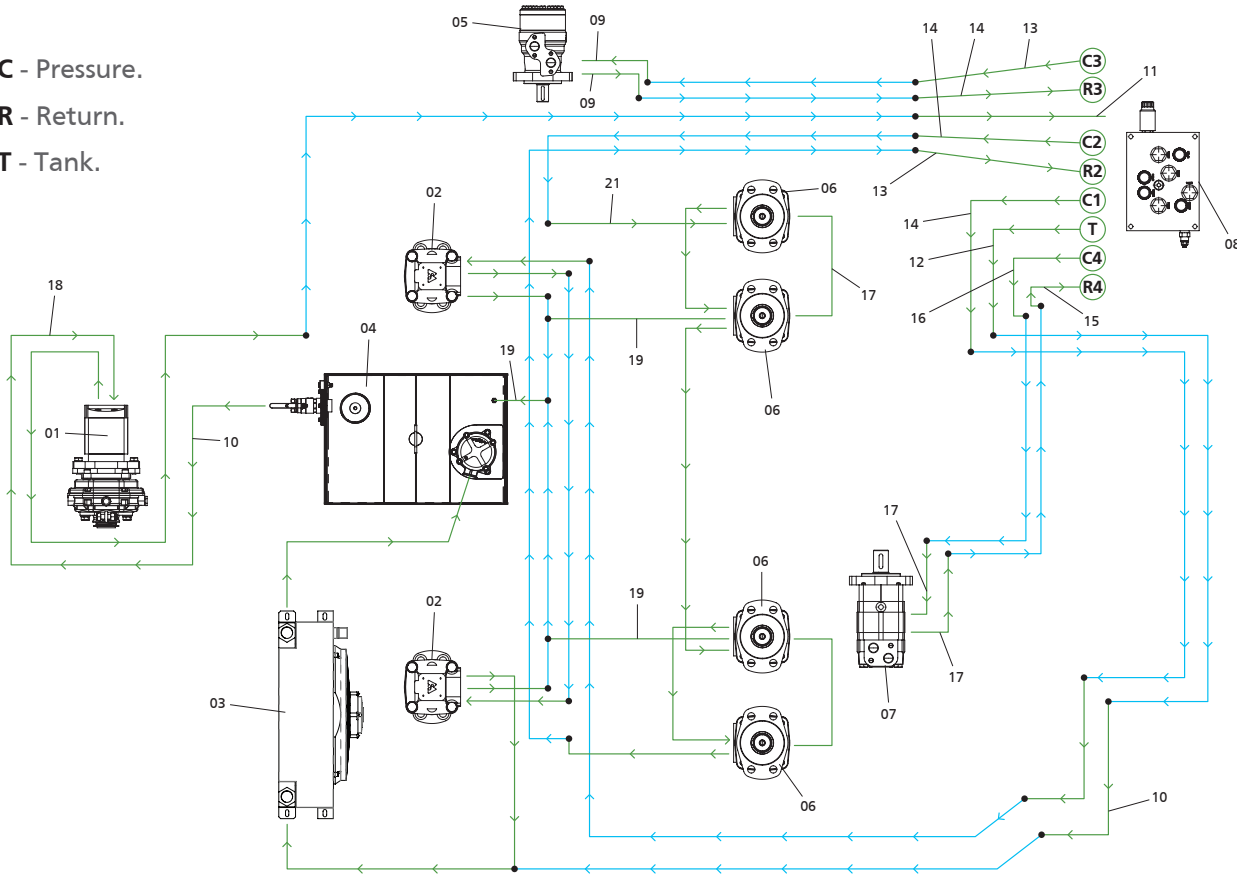
Item	Amount	Product code	Product description
Maná harvester hose kit			
01	2	800.470.0202	Hose Ø3/8" x 3750mm 1TCG and 1TRF with quick hitch.
02	1	800.470.0204	Hose Ø1.1/4" (R01-20) x 3780mm 1 TCG 45° DKO X 1 TRG DKO.
03	1	800.470.0206	Hose Ø3/4" (R17-12) x 4040mm 1 TCG 90° DKO X 1 TRG DKO.
04	2	800.470.0208	Hose Ø3/4" (R17-12) x 670mm 1 TC 45° DKO X 1 TRG DKO.
05	1	800.470.0210	Hose Ø3/4" (R17-12) x 1130mm 1 TCG 45° DKO
06	1	800.470.0212	Hose Ø1/2" (R17-8) x 500mm 1 TRG DKO X 1 TRG DKO.
07	1	800.470.0214	Hose Ø1/2" (R17-8) x 480mm 1 TRG DKO X 1 TRG DKO.
08	2	800.470.0216	Hose Ø1/2" (R17-8) x 640mm 1 TCG 45° DKO X 1 TRG DKO.
09	2	800.470.0218	Hose Ø1/2" (R17-8) x 620mm 1 TCG 45° DKO
10	1	800.470.0220	Hose Ø1/2" (R17-8) x 990mm 1 TRG DKO X 1 TRG DKO.
11	1	800.470.0222	Hose Ø1/2" (R17-8) x 940mm 1 TRG DKO X 1 TRG DKO.
12	2	800.470.0224	Hose Ø1/2" (R17-8) x 640mm 1 TRG DKO X 1 TRG DKO.
13	2	800.470.0226	Hose Ø1/4" (R17-4) x 340mm 1 TCG 90° DKO X 1 TRG DKO.
14	2	800.470.0228	Hose Ø1/4" (R17-4) x 610mm 1 TCG 90° DKO X 1 TRG DKO.
15	1	800.470.0230	Hose Ø1/4" (R17-4) x 440mm 1 TRG DKO X 1 TRG DKO.
16	1	800.470.0232	Hose Ø1/2" (R17-8) x 520mm 1 TCG 90° DKO X 1 TRG DKO.
17	2	800.470.0233	Hose Ø1/2" (R17-8) x 630mm 2 TCG 90° DKO.
18	1	800.470.0235	Hose Ø1/2" (R17-8) x 670mm 2 TCG 90° DKO.
19	1	800.470.0237	Hose Ø1/2" (R17-8) x 590mm 1 TCG 90° DKO
20	1	800.470.0239	Hose Ø5/8" (R17-10) x 960mm 1 TCG 45° DKO X 1 TRG DKO.
21	1	8004700241	Hose Ø5/8" (R17-10) x 620mm 1 TCG 45° DKO
22	3	800.470.0243	Hose Ø5/8" (R17-10) x 850mm 1 TCG 90° DKO X 1 TCG 45°.
23	2	800.470.0245	Hose Ø1/4" (R02-4) x 400mm 2 TCG 90° DKO.
24	1	800.470.0247	Hose Ø1" (R17-16) x 760mm 1 TCG 90° DKO X 1 TRG DKO.
25	1	800.470.0249	Hose Ø3/4" (R17-12) x 830mm 1 TCG 90° DKO
26	1	8.004.700.251	Hose Ø5/8" (R17-10) x 890mm 1 TCG 90° DKO X 1 TRG DKO.



HYDRAULIC SYSTEM

Item	Product code	Product description
01	800.070.0268	Maná gearbox + gear pump set.
02	020.02.0015	Motor S reinforced shaft 31.7mm R7/8 (M-LHSYF-250-C4B).
03	022.71.0002	Radiator AR OL 1" 150LTS 12V 12000 KCAL/H (WXAH1417).
04	800.093.0004	Maná complete oil reservoir.
05	020.02.0016	Motor R cylinder shaft. 25.4mm R7/8 UNF (M-LHR-200-C4).
06	020.02.0016	Motor R cylinder shaft. 25.4mm R7/8 UNF (M-LHR-200-C4).
07	020.02.0015	Motor S reinforced shaft 31.7mm R7/8 (M-LHSYF-250-C4B).
08	019.04.0007	Command block Y-VM1534 (Maná).
09	800.470.0202	Hose Ø3/8" x 3750mm 1TCG e 1TRF with quick hitch.
10	800.470.0204	Hose Ø1.1/4" (R01-20) x 3780mm 1 TCG 45° DKO x 1 TRG DKO.
11	800.470.0208	Hose Ø3/4" (R17-12) x 670mm 1 TC 45° DKO x 1 TRG DKO.
12	800.470.0210	Hose Ø3/4" (R17-12) x 1130mm 1 TCG 45° DKO x 1 TRG DKO.
13	800.470.0216	Hose Ø1/2" (R17-8) x 640mm 1 TCG 45° DKO x 1 TRG DKO.
14	800.470.0218	Hose Ø1/2" (R17-8) x 620mm 1 TCG 45° DKO x 1 TRG DKO.
15	800.470.0220	Hose Ø1/2" (R17-8) x 990mm 1 TRG DKO x 1 TRG DKO.
16	800.470.0222	Hose Ø1/2" (R17-8) x 940mm 1 TRG DKO x 1 TRG DKO.
17	800.470.0224	Hose Ø1/2" (R17-8) x 640mm 1 TRG DKO x 1 TRG DKO.
18	800.470.0226	Hose Ø1/4" (R17-4) x 340mm 1 TCG 90° DKO x 1 TRG DKO.
19	800.470.0228	Hose Ø1/4" (R17-4) x 610mm 1 TCG 90° DKO x 1 TRG DKO.
20	800.470.0230	Hose Ø1/4" (R17-4) x 440mm 1 TRG DKO x 1 TRG DKO.
21	800.470.0232	Hose Ø1/2" (R17-8) x 520mm 1 TCG 90° DKO x 1 TRG DKO.

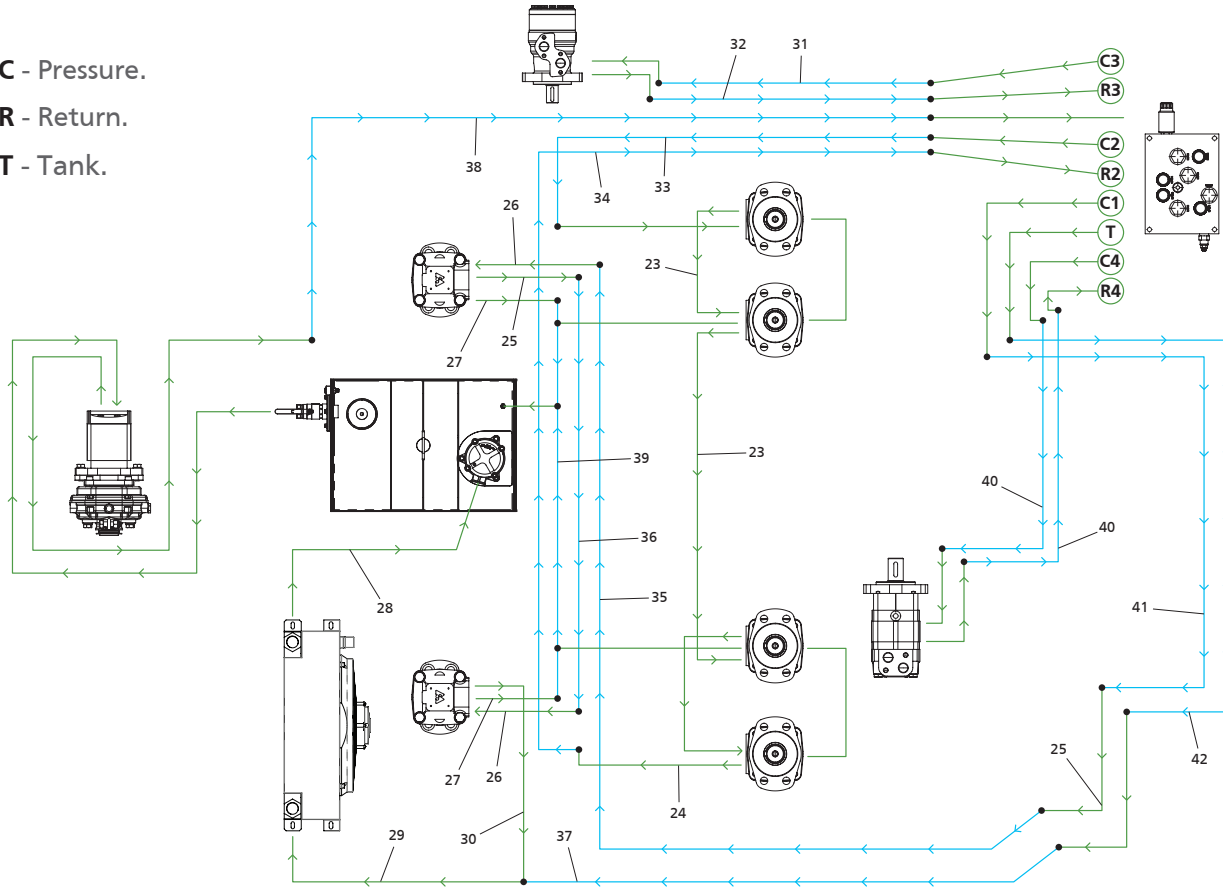
C - Pressure.
R - Return.
T - Tank.



HYDRAULIC SYSTEM

Item	Product code	Product description
22	800.470.0233	Hose Ø1/2" (R17-8) x 630mm 2 TCG 90° DKO.
23	800.470.0235	Hose Ø1/2" (R17-8) x 670mm 2 TCG 90° DKO.
24	800.470.0237	Hose Ø1/2" (R17-8) x 590mm 1 TCG 90° DKO x 1 TRG DKO.
25	800.470.0241	Hose Ø5/8" (R17-10) x 620mm 1 TCG 45° DKO x 1 TRG DKO.
26	800.470.0243	Hose Ø5/8" (R17-10) x 850mm 1 TCG 90° DKO x 1 TCG 45°.
27	800.470.0245	Hose Ø1/4" (R02-4) x 400mm 2 TCG 90° DKO.
28	800.470.0247	Hose Ø1" (R17-16) x 760mm 1 TCG 90° DKO x 1 TRG DKO.
29	800.470.0249	Hose Ø3/4" (R17-12) x 830mm 1 TCG 90° DKO x 1 TRG DKO.
30	8.004.700.251	Hose Ø5/8" (R17-10) x 890mm 1 TCG 90° DKO x 1 TRG DKO.
31	022.11.0013	Hydraulic tube DY - TAB 150110 x 1321.
32	022.11.0014	Hydraulic tube DY - TAB 150110 x 1261.
33	022.11.0015	Hydraulic tube DY - TAB 150110 x 1435.
34	022.11.0017	Hydraulic tube DY - TAB 150110 x 2731.
35	022.11.0021	Hydraulic tube DY - TAB 180130 x 2805.
36	022.11.0022	Hydraulic tube DY - TAB 180130 x 800.
37	022.11.0023	Hydraulic tube DY - TAB 220170 x 1677.
38	022.11.0025	Hydraulic tube DY - TAB 22170 x 2297.
39	022.11.0026	Hydraulic tube DY - TAB 180130 x 738 collector.
40	022.11.0027	Hydraulic tube DY - TAB 150110 x 1848.
41	022.11.0028	Hydraulic tube DY - TAB 180130 x 1916.
42	022.11.0029	Hydraulic tube DY - TAB 220170 x 1919.

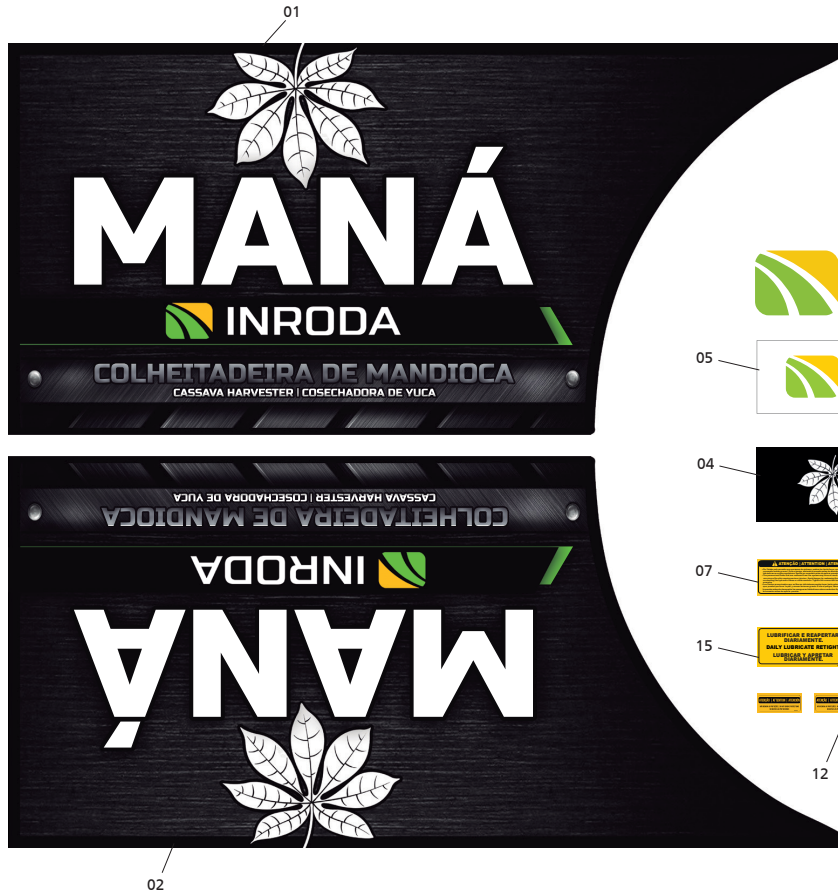
C - Pressure.
R - Return.
T - Tank.





STICKER KIT

Item	Amount	Product code	Product description
Maná sticker kit			
01	1	018.01.0369	Maná right side sticker.
02	1	018.01.0368	Maná left side sticker.
03	1	018.01.0261	Resin Inroda Sticker - 747x115mm.
04	1	018.01.0316	Maná sticker.
05	1	018.01.0205	Inroda Sticker 590x130mm.
06	1	018.01.0353	Tire inflation sticker.
07	1	018.01.0351	Caution leaking hose sticker.
08	2	018.01.0375	Use the handrail sticker.
09	1	018.01.0376	Attention risk of falling.
10	1	018.01.0371	Attention wear PPE sticker.
11	2	018.01.0373	Crushing hazard sticker.
12	2	018.01.0374	Attention do not remove the guards sticker.
13	1	018.01.0372	Attention check oil level sticker.
14	1	018.01.0349	Attention instruction manual sticker.
15	1	018.01.0350	Lubricate and retighten disc harrow sticker.
16	4	018.01.0284	Lifting sticker.
17	1	018.01.0358	Disc warning sticker.
18	1	018.01.0370	Control panel sticker.
19	1	018.01.0377	Patent required sticker.



02

01

18

03

16

05

04

14

07

17

15

06

12

08

09

19

